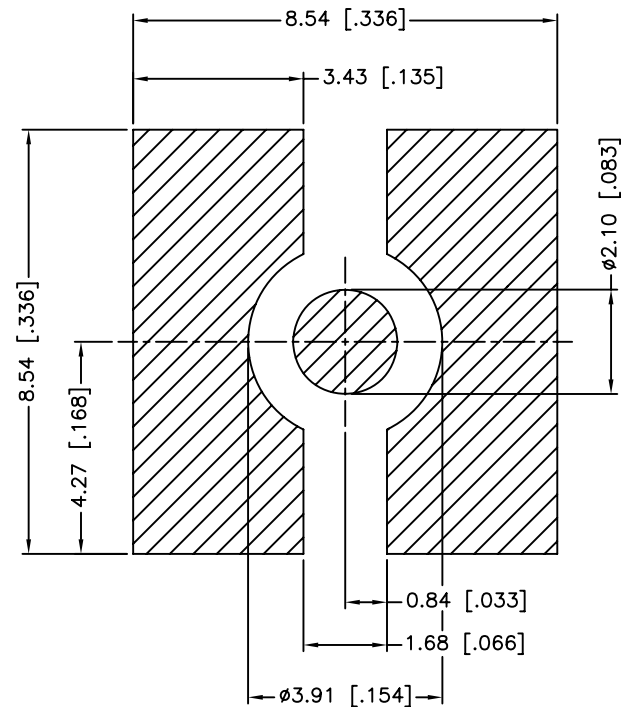
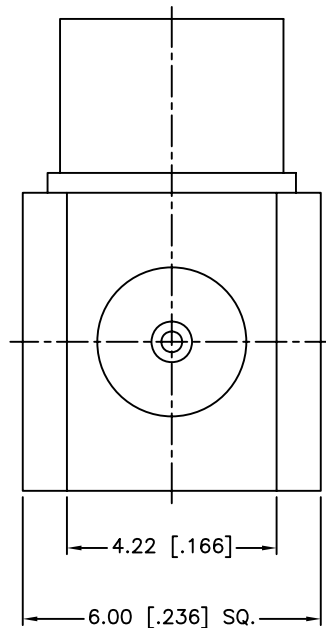
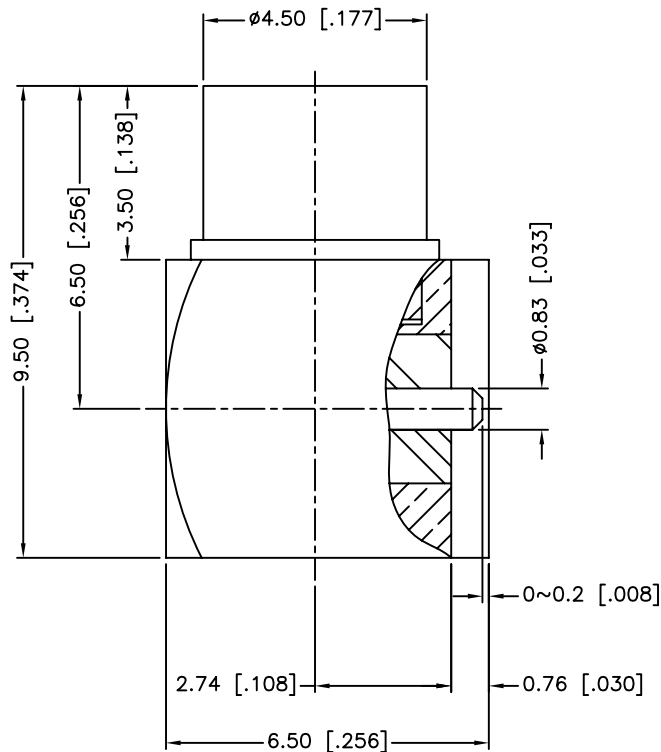


| REV. | DATE | ECR NO. | DESCRIPTION |
|------|----------|---------|--|
| NC | 02/20/01 | XXXXXX | INITIAL RELEASE |
| A | 11/19/13 | 2662 | ADD RECOMMENDED PCB LAYOUT, ADD ELECTRICAL/MECHANICAL NOTES, UPDATE DRAWING FORMAT |



RECOMMENDED PCB LAYOUT

1. IMPEDANCE: 75 OHM
2. FREQUENCY RANGE: 0-6 GHZ
3. DIELECTRIC WITHSTANDING VOLTAGE: 500 VRMS, MIN.
4. DURABILITY: 500 CYCLES MIN.
5. TEMPERATURE RANGE: -65°C TO +165°C

| 3 | CONTACT PIN | BER. COPPER | GOLD | 1 |
|---|-------------|-------------|---------|-----|
| 2 | INSULATOR | PTFE | NATURAL | 1 |
| 1 | BODY | BRASS | GOLD | 1 |
| | DESCRIPTION | MATERIAL | FINISH | QTY |

UNLESS OTHERWISE SPECIFIED DIMENSIONS ARE IN MILLIMETERS. DIMENSIONS IN [] ARE IN INCHES AND FOR CUSTOMER REFERENCE ONLY.
 UNLESS OTHERWISE SPECIFIED
 TOLERANCES FOR MILLIMETERS ARE:
 <0.5 ± 0.05mm
 0.5 - 6mm ± 0.10mm
 6 - 30mm ± 0.20mm
 30 - 120mm ± 0.30mm
 ANGLES ± 1°
 UNLESS OTHERWISE SPECIFIED
 TOLERANCES FOR INCHES ARE:
 <.020 ± 0.002"
 .020 - .236 = ± 0.004"
 .236 - 1.180 = ± 0.007"
 1.180 - 4.724 = ± 0.012"
 ANGLES ± 1°
 DO NOT SCALE DRAWING

| APPROVALS | DATE |
|---------------|-------------------------|
| DRAWN M.ZHANG | 11/20/13 |
| CHECKED | |
| ISSUED | |
| SHEET 1 OF 1 | |
| CAD FILE | C:/CONNEX/252149-75.DWG |

| | | | |
|---|--------|--------|----------|
| Amphenol Connex | | | |
| PART DESCRIPTION MCX R/A P.C. BOARD RECEPT. JACK SURFACE MOUNT - 75 OHM | | | |
| PART NO. 252149-75 | | | |
| DWG. NO. 252149-75.DWG | REV. A | SIZE A | SCALE NA |