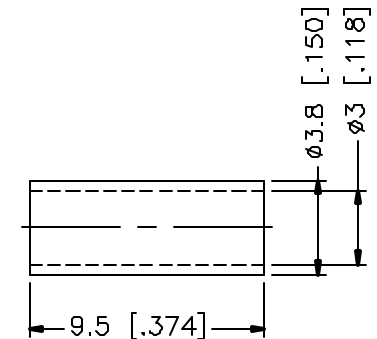
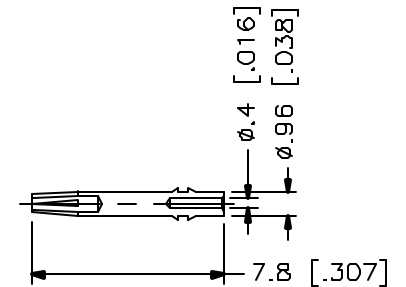
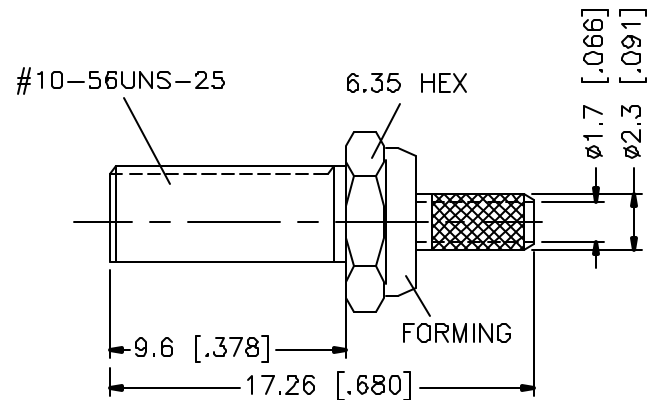
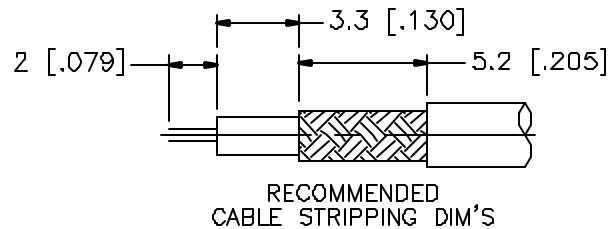
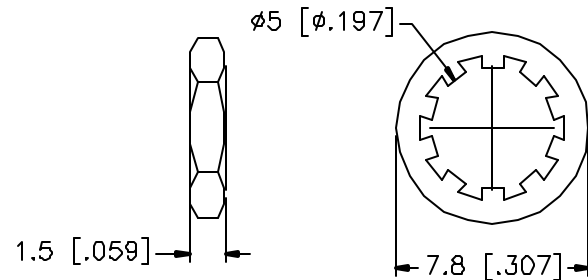
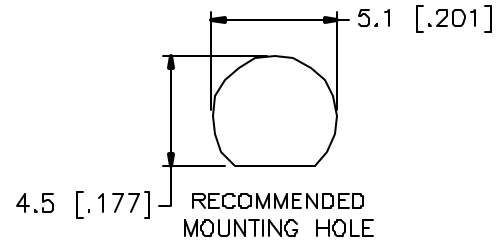



REV.	DATE	DESCRIPTION
NC	01/21/01	INITIAL RELEASE



CRIMP NOTES:

1. CRIMPED FERRULE
HEX CRIMP SIZE .128"
2. CONTACT PIN TO SOLDER
3. MAX. PANEL THICKNESS = 6.8mm

DESCRIPTION	MATERIAL	FINISH	UNLESS OTHERWISE SPECIFIED DIMENSIONS ARE IN MILLIMETERS	APPROVALS	DATE	 Connex Connector Corporation			
1 BODY	BRASS	GOLD	DIMENSIONS IN [] ARE IN INCHES FOR CUSTOMER REFERENCE ONLY	DRAWN G.R.S.	01/21/01				
2 INSULATOR	TEFLON	NATURAL		CHECKED					
3 BARREL	BRASS	GOLD	UNLESS OTHERWISE SPECIFIED TOLERANCES FOR MILLIMETERS ARE 0.5-6 = ± 0.2 6-30 = ± 0.4 30-120 = ± 0.6 120-315 = ± 1 315-1000 = ± 1.6 1000-2000 = ± 2.4	ISSUED		TITLE MCX BULKHEAD CRIMP JACK - 75ohm (FOR RG-179/U, 187A/U CABLE)			
4 CONTACT PIN	BER. COPPER	GOLD				SIZE	FSCW NO.	DWG NO	REV
5 LOCK WASHER	BRASS	GOLD				A	99001	252145-75.DWG	NC
6 HEX NUT	BRASS	GOLD				SCALE	NA	PART NO.	
7 FERRULE	COPPER	GOLD						252145-75	SHEET
8			DO NOT SCALE DRAWING						1 OF 1