

NOTES:

1. MATERIALS AND FINISHES:
HEX NUT - BRASS, NICKEL PLATING
LOCK WASHER - BRASS, NICKEL PLATING
BODY - BRASS, NICKEL PLATING
CONTACT - BERYLLIUM COPPER, GOLD PLATING
INSULATOR - PTFE, NATURAL

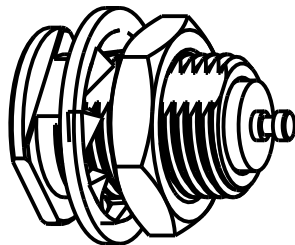
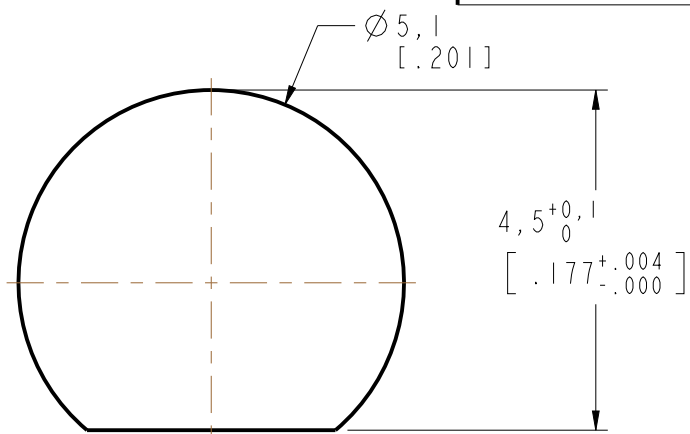
2. ELECTRICAL:
A. IMPEDANCE: 50 OHM
B. FREQUENCY RANGE: DC TO 6 GHz
C. VSWR: 1.06 MAX. @ DC TO 2.5 GHz
D. DIELECTRIC WITHSTANDING VOLTAGE: 1000 VRMS, MIN.

3. MECHANICAL:
A. DURABILITY: 500 CYCLES MIN.
B. TEMPERATURE RANGE: -55°C TO +155°C

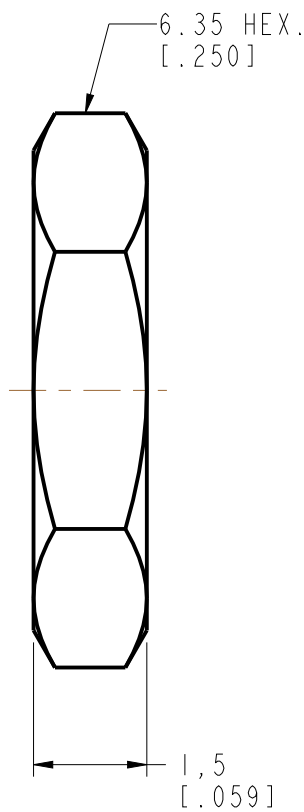
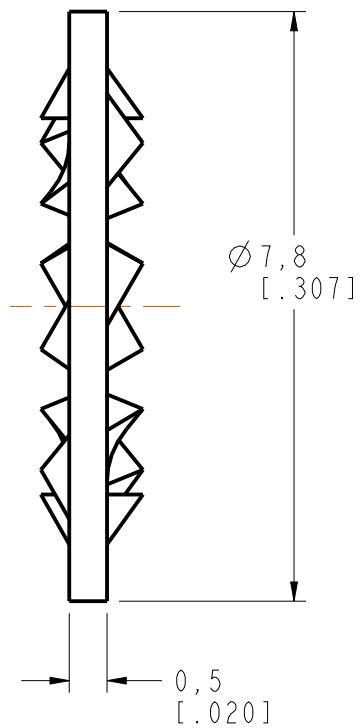
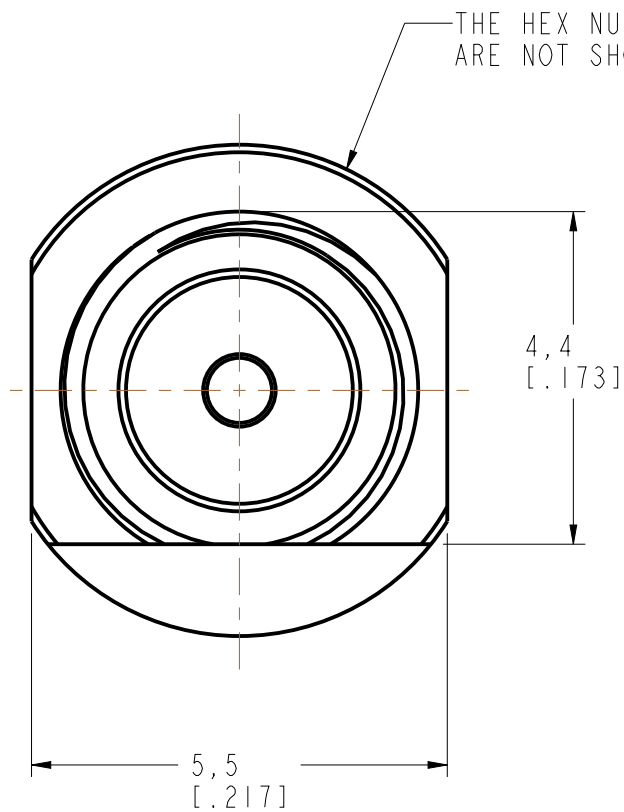
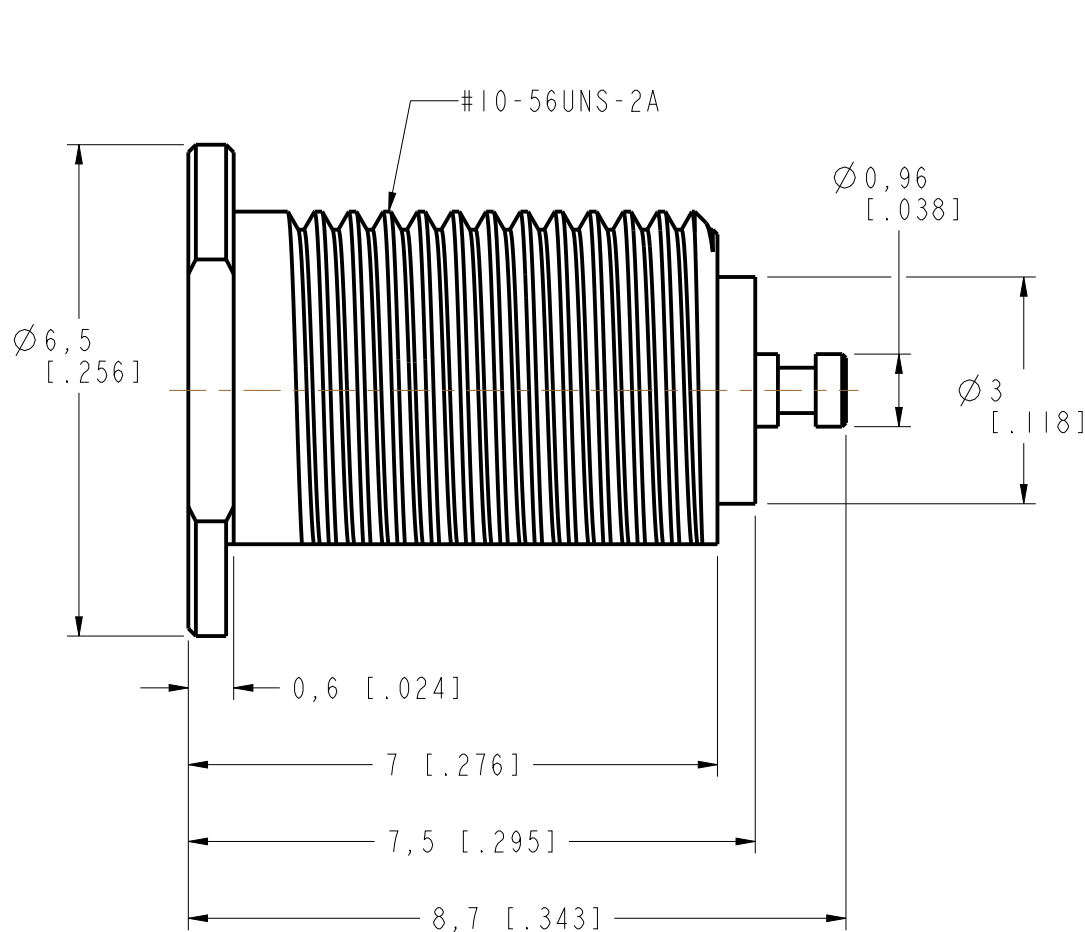
THIRD ANGLE PROJ.

REVISIONS

REV	DESCRIPTION	DATE	ECO	APPR
NC	INITIAL RELEASE	20-Jan-97	----	GRS
A	UPDATE DRAWING FORMAT	07-Aug-14	2788	MZ



SCALE 4.000



CUSTOMER OUTLINE DRAWING
ALL OTHER SHEETS ARE FOR INTERNAL USE ONLY

UNLESS OTHERWISE SPECIFIED, DIMENSIONS ARE IN METRIC AND TOLERANCES ARE: <0.5mm 0.5 - 6mm 6 - 30mm 30 - 120mm ANGLES ± 0.05mm ±0.1mm ±0.2mm ± 0.3mm ±1°	MATERIAL -	DRAWN M.ZHANG	DATE 07-Aug-14	TITLE MCX BULKHEAD RECEPT JACK		Amphenol Connex	
		ENGINEER S.DUAN	DATE 07-Aug-14				
	REFERENCE MCX6351B9-NT30G-50	APPROVED S.HSIEH	DATE 07-Aug-14	SCALE: 10.0:1.0	SHEET 3 OF 3	DRAWING NO.	
	CONFIGURATION LEVEL: In Work	CAD FILE	DWG SIZE B	REV A	ITEM NO.		
	FINISH				PART NO. 252132		

NOTICE - These drawings, specifications, or other data (1) are, and remain the property of Amphenol corp. (2) must be returned upon request; and (3) are confidential and not to be disclosed to any person other than those to whom they are given by Amphenol Corp. the furnishing of these drawings, specifications, or other data by Amphenol Corp., or to any other person to anyone for any purpose is not to be regarded by implication or otherwise in any manner licensing, granting rights to permitting such holder or any other person to manufacture, use or sell any product, process or design, patented or otherwise, that may in any way be related to or disclosed by said drawings, specifications, or other data.