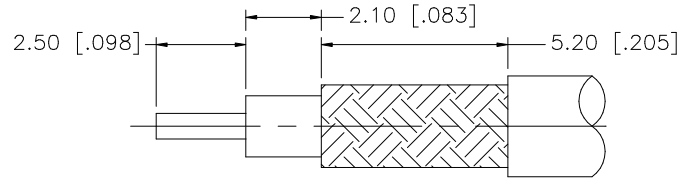
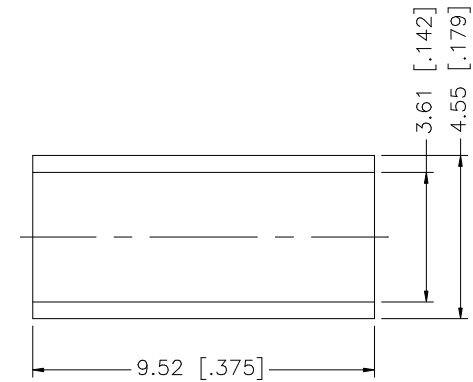
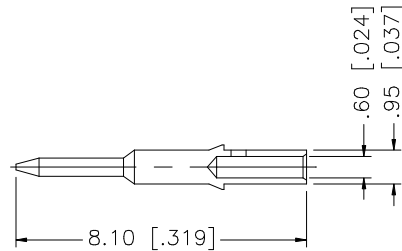
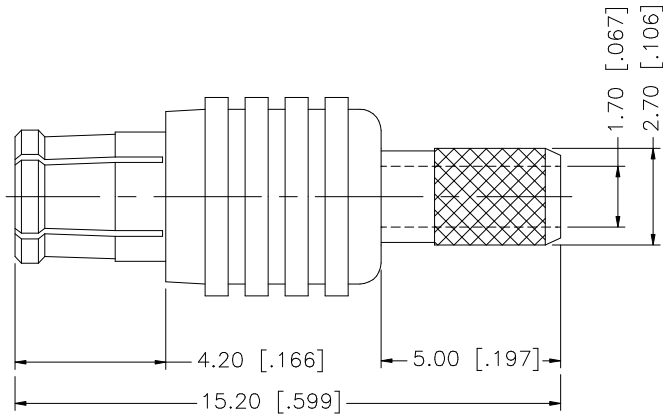


REV.	DATE	DESCRIPTION
A	11/31/01	MODIFY CONTACT PIN
B	10/31/05	UPDATE DRAWING FORMAT, MODIFY CRIMP NOTES
C	02/15/07	REVISE CONTACT PIN AND FERRULE DIMENSIONS



RECOMMENDED CABLE
STRIPPING DIMENSIONS



NOTE:

1. CRIMPED FERRULE HEX CRIMP SIZE .151"
2. CRIMPED CONTACT PIN SQ. CRIMP SIZE 0.7(mm)

8					<div>UNLESS OTHERWISE SPECIFIED DIMENSIONS ARE IN MILLIMETERS. DIMENSIONS IN [] ARE IN INCHES AND FOR CUSTOMER REFERENCE ONLY.</div> <div>UNLESS OTHERWISE SPECIFIED TOLERANCES FOR MILLIMETERS ARE: 0.5 – 8mm ± 0.20mm 8 – 30mm ± 0.40mm 30 – 120mm ± 0.50mm</div> <div>UNLESS OTHERWISE SPECIFIED TOLERANCES FOR INCHES ARE: .020 – .315 = ± 0.007" .315 – 1.180 = ± 0.015" 1.180 – 4.724 = ± 0.020"</div> <div>DO NOT SCALE DRAWING</div>	APPROVALS		DATE		<h1>Amphenol Connex</h1>										
7						DRAWN	G.R.S.	02/15/07												
6						CHECKED														
5	FERRULE	COPPER	GOLD	1			ISSUED				PART DESCRIPTION									
4	CONTACT PIN	BRASS	GOLD	1			SHEET	1 OF 1			MCX STRAIGHT CRIMP PLUG – GOLD (FOR RG-3179/U DOUBLE BRAID)									
3	INSULATOR	TEFLON	NATURAL	2							PART NO.									
2	BODY	BER. COPPER	GOLD	1							252121-75									
1	HOUSING	BRASS	GOLD	1							DWG. NO.		252121-75.DWG		REV.	C	SIZE	A	SCALE	NA
	DESCRIPTION	MATERIAL	FINISH	QTY				CAD FILE C:/252/252121-75.DWG												