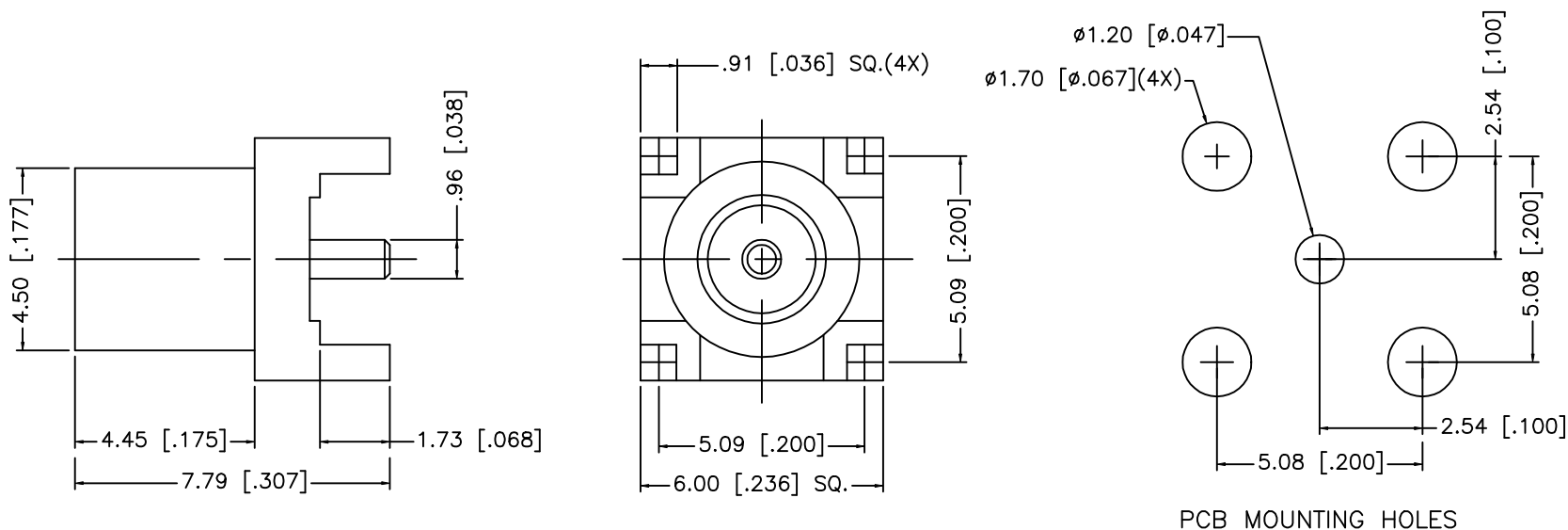


| REV. | DATE     | DESCRIPTION     |
|------|----------|-----------------|
| NC   | 09/16/02 | INITIAL RELEASE |



|   |             |             |         |  |   |         |  |          |               |           |              |          |
|---|-------------|-------------|---------|--|---|---------|--|----------|---------------|-----------|--------------|----------|
|   |             |             |         | UNLESS OTHERWISE SPECIFIED<br>DIMENSIONS ARE IN MILLIMETERS  | APPROVALS   | DATE    | <div>Amphenol - Connex</div> <div>CONNECTOR CORPORATION</div> <div>TITLE</div> <div>MCX P.C. BOARD RECEPTACLE JACK<br/>(1.73 [.068"] LEGS)</div> |          |               |           |              |          |
| 8 |             |             |         |  | DIMENSIONS IN [ ]<br>ARE IN INCHES FOR<br>CUSTOMER REFERENCE ONLY | DRAWN   |  |          |               |           | G.R.S.       | 09/16/02 |
| 7 |             |             |         |  |   | CHECKED |  |          |               |           |              |          |
| 6 |             |             |         |  |   | ISSUED  |  |          |               |           |              |          |
| 5 |             |             |         | UNLESS OTHERWISE SPECIFIED<br>TOLERANCES FOR INCHES ARE:<br><br>.XXX = ± 0.005"<br>.XX = ± 0.010"<br>.X = ± 0.020"<br><br>DO NOT SCALE DRAWING |   |         | SIZE   | FSCM NO. | DWG. NO.      | REV.      |              |          |
| 4 |             |             |         |  |   |         | A  | 99001    | 252105-10.DWG | NC        |              |          |
| 3 | CONTACT PIN | BER. COPPER | GOLD    |  |   |         |  |          |               |           |              |          |
| 2 | INSULATOR   | TEFLON      | NATURAL |  |   |         |  |          |               |           |              |          |
| 1 | BODY        | BRASS       | GOLD    |  |   |         |  |          |               |           |              |          |
|   | DESCRIPTION | MATERIAL    | FINISH  |  |   |         | SCALE  | NA       | PART NO.      | 252105-10 | SHEET 1 OF 1 |          |