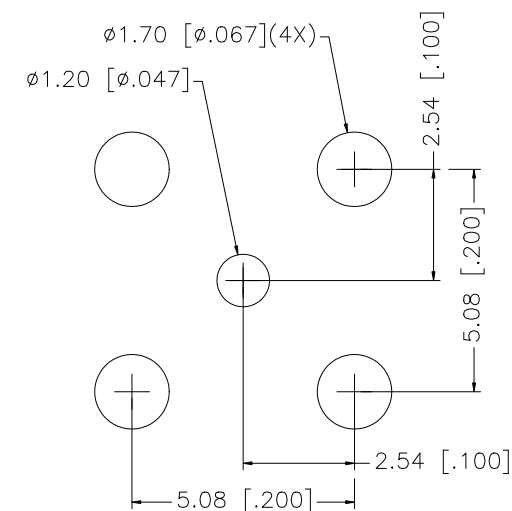
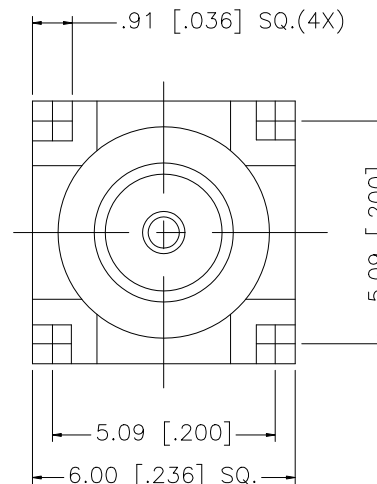
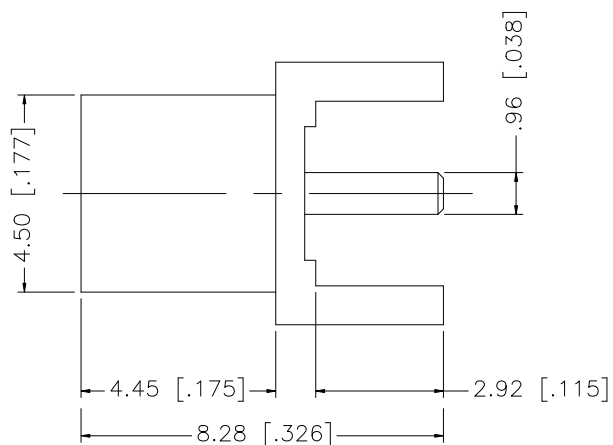


REV.	DATE	DESCRIPTION
A	07/10/97	REVISE LEAD LENGTH
B	09/16/02	REVISE DESCRIPTION
C	07/19/07	UPDATE DRAWING FORMAT



PCB MOUNTING HOLES

					UNLESS OTHERWISE SPECIFIED DIMENSIONS ARE IN MILLIMETERS. DIMENSIONS IN [ ] ARE IN INCHES AND FOR CUSTOMER REFERENCE ONLY.  UNLESS OTHERWISE SPECIFIED TOLERANCES FOR MILLIMETERS ARE: 0.5 – 8mm ± 0.20mm 8 – 30mm ± 0.40mm 30 – 120mm ± 0.50mm  UNLESS OTHERWISE SPECIFIED TOLERANCES FOR INCHES ARE: .020 – .315 = ± 0.007” .315 – 1.180 = ± 0.015” 1.180 – 4.724 = ± 0.020”	APPROVALS	DATE	Amphenol Connex						
8						DRAWN	G.R.S.						07/19/07	
7						CHECKED			PART DESCRIPTION  MCX P.C. BOARD RECEPTACLE JACK (2.92 [.115”] LEGS – SHORT BODY)					
6						ISSUED								
5						SHEET	1 OF 1		PART NO.  252105-01					
4														
3	CONTACT PIN	BER. COPPER	GOLD	1	DO NOT SCALE DRAWING				DWG. NO. 252105-01.DWG					
2	INSULATOR	TEFLON	NATURAL	1		C:/252/252105-01.DWG								
1	BODY	BRASS	GOLD	1					REV. B	SIZE A	SCALE NA			
	DESCRIPTION	MATERIAL	FINISH	QTY										