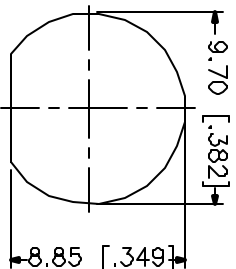
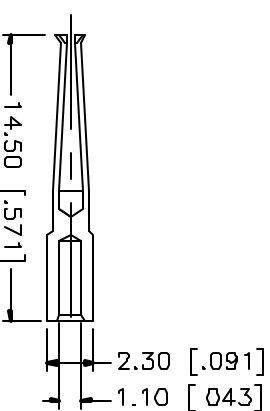
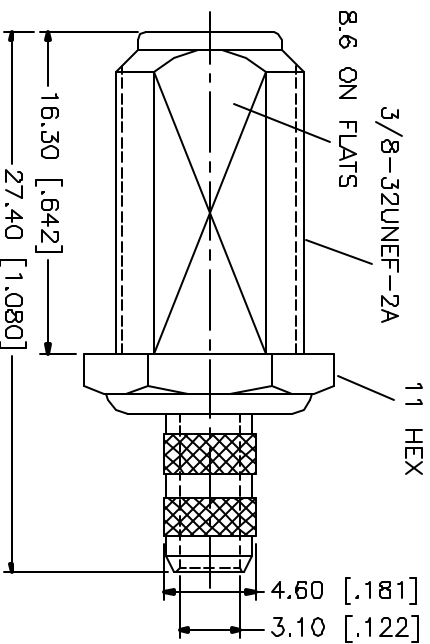
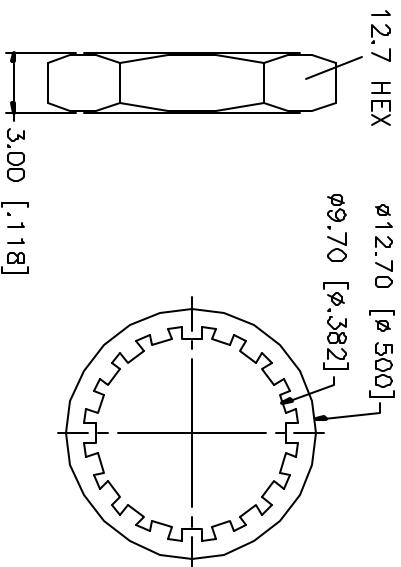
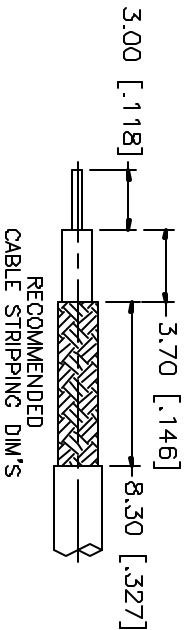
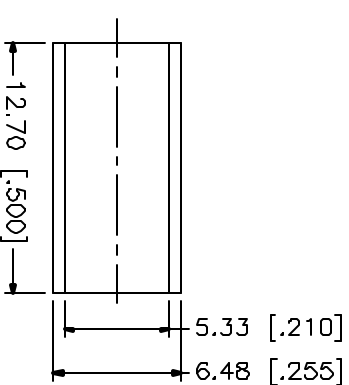



REV.	DATE	DESCRIPTION
NC	11/13/01	INITIAL RELEASE



RECOMMENDED
MOUNTING HOLE

- NOTES:
1. CRIMPED FERRULE
HEX CRIMP SIZE 213"
 2. CONTACT PIN TO SOLDER
 3. MAX PANEL THICKNESS = 6.5mm
 4. ACCEPTS Ø0.5~Ø1.05 CENTER
CONDUCTOR TYPICAL



DESCRIPTION	MATERIAL	FINISH	UNLESS OTHERWISE SPECIFIED DIMENSIONS ARE IN MILLIMETERS DIMENSIONS IN [] ARE IN INCHES FOR CUSTOMER REFERENCE ONLY			APPROVALS		DATE	<div> Connector Corporation</div> <div>TITLE F BULKHEAD CRIMP JACK (FOR RG-58/U CABLE)</div>					
1 BODY	BRASS	NICKEL	UNLESS OTHERWISE SPECIFIED TOLERANCES FOR MILLIMETERS ARE: 0.5-6 = ± 0.2 6-30 = ± 0.4 30-120 = ± 0.6 120-315 = ± 1 315-1000 = ± 1.6 1000-2000 = ± 2.4	DRAWN	G.R.S.	11/13/01								
2 INSULATOR	TEFLON	NATURAL		CHECKED										
3 CONTACT PIN	BER. COPPER	GOLD		ISSUED										
4 FERRULE	COPPER	NICKEL												
5 LOCK WASHER	BRASS	NICKEL							SIZE	FSQM NO	DWG NO.	REV.		
6 HEX NUT	BRASS	NICKEL							A	99001	222177-10.DWG	NC		
7									SCALE	NA	PART NO	222177-10	SHEET	1 OF 1
8			DO NOT SCALE DRAWING											

connex

Connector Corporation

F BULKHEAD CRIMP JACK
(FOR RG-58/U CABLE)

222177-10

SHEET 1 OF 1