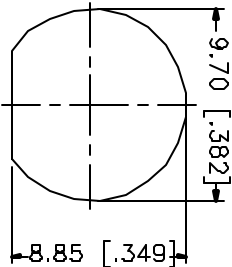
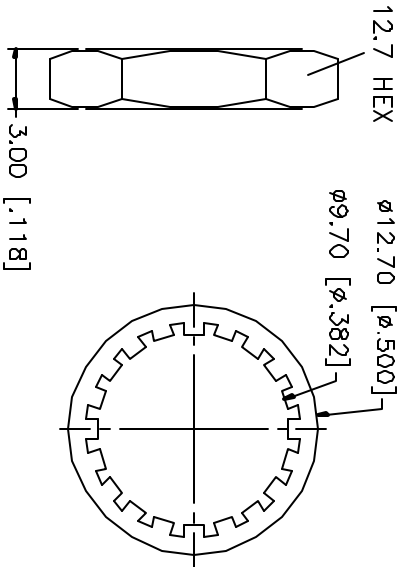
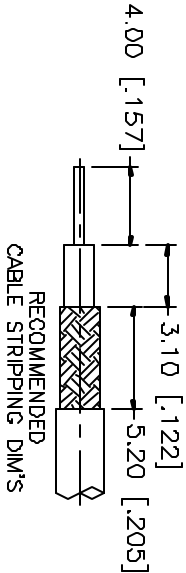
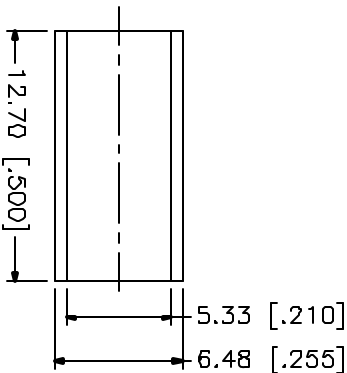
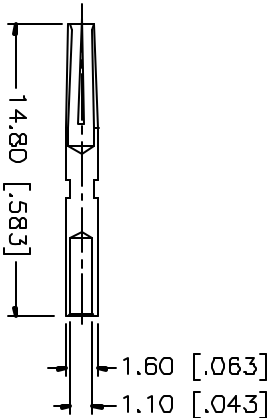
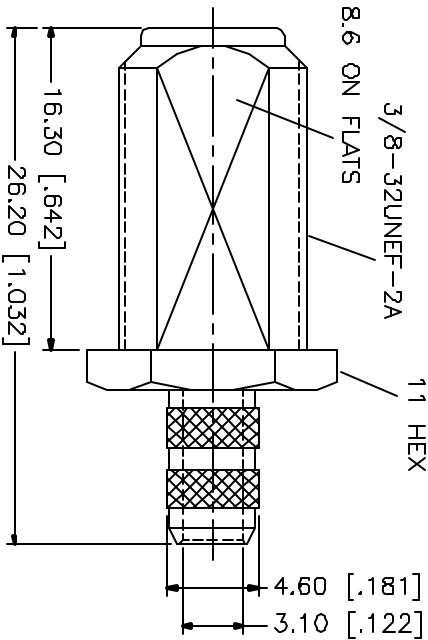


REV.	DATE	DESCRIPTION
NC	10/28/01	UPDATE DRAWING



RECOMMENDED
MOUNTING HOLE



NOTES:
1. CRIMPED FERRULE
HEX CRIMP SIZE .213"

DESCRIPTION	MATERIAL	FINISH	UNLESS OTHERWISE SPECIFIED DIMENSIONS ARE IN MILLIMETERS	APPROVALS	DATE	<div>Amphenol Connex</div> <div>F BULKHEAD CRIMP JACK (FOR RG-58/U CABLE)</div>			
1 BODY	BRASS	NICKEL	DIMENSIONS IN [] ARE IN NICHES FOR CUSTOMER REFERENCE ONLY	DRAWN	G.R.S.	10/28/01	TITLE		
2 INSULATOR	TEFLON	NATURAL		CHECKED			ISSUED		
3 CONTACT PIN	PHOS. BRONZE	GOLD					SIZE		
4 FERRULE	BRASS	NICKEL	UNLESS OTHERWISE SPECIFIED TOLERANCES FOR MILLIMETERS ARE: 0.5-8 = ± 0.2 8-30 = ± 0.4 30-120 = ± 0.6 120-315 = ± 1 315-1000 = ± 1.6 1000-2000 = ± 2.4				FSCM NO.		
5 LOCK WASHER	BRASS	NICKEL					A		
6 HEX NUT	BRASS	NICKEL					99001		
7							DWG. NO.		
8			DO NOT SCALE DRAWING				222177		
							SHEET		
							1 OF 1		