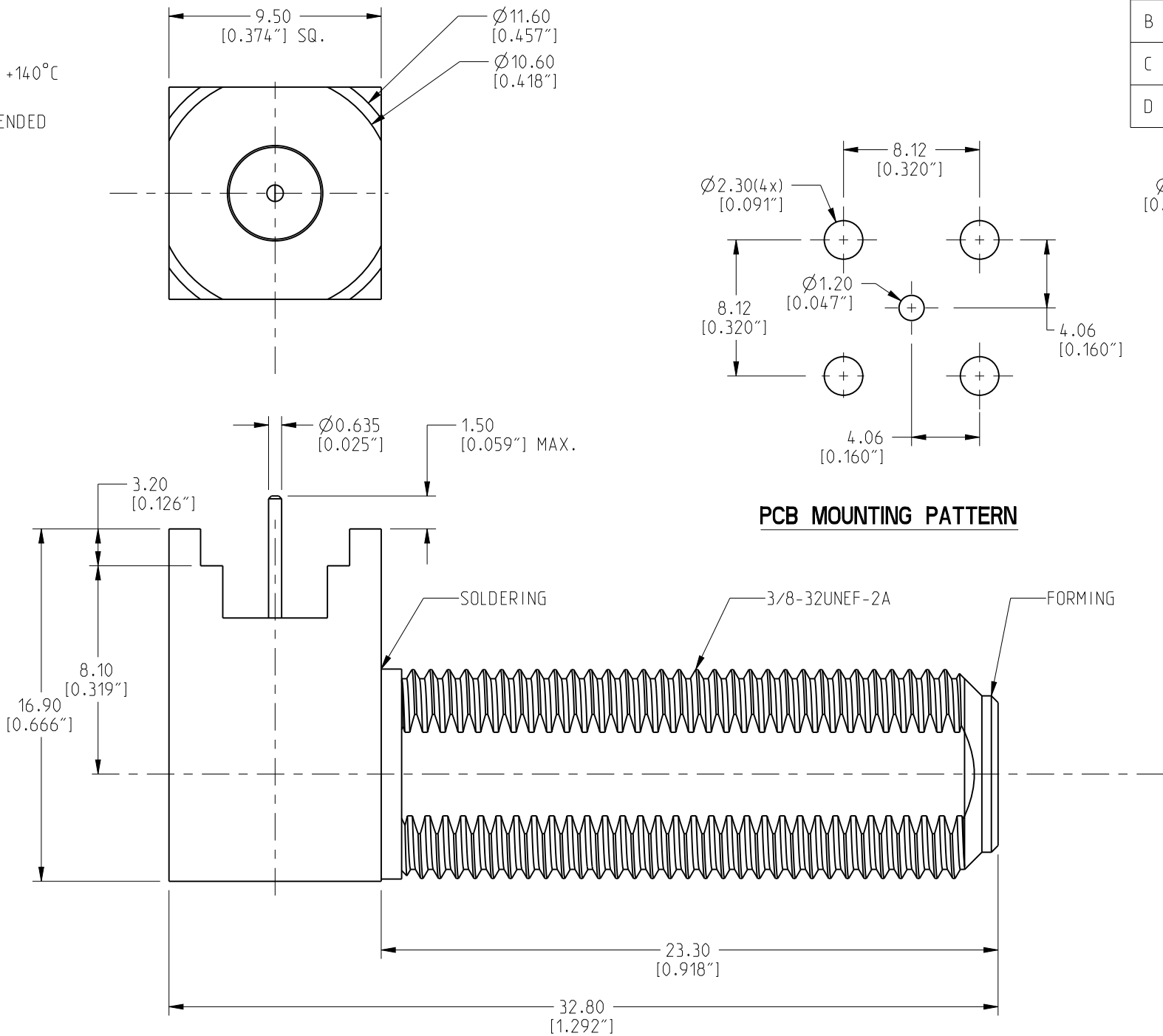


NOTE:

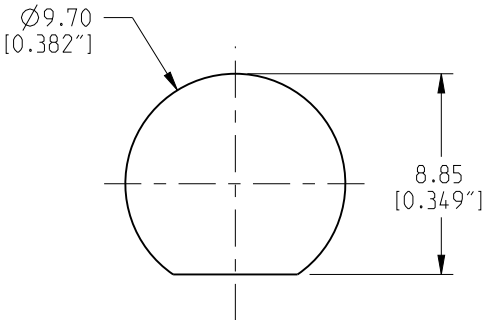
1. SPECIFICATIONS

- NOMINAL IMPEDANCE: 75 OHMS
- FREQUENCY RANGE: 0 TO 1.5 GHz
- VOLTAGE RATING: 500V (ms)
- OPERATING TEMPERATURE: -40°C ~ +140°C
- MATING: 200 CYCLES
- MATING TORQUE: 15 in/lbs RECOMMENDED

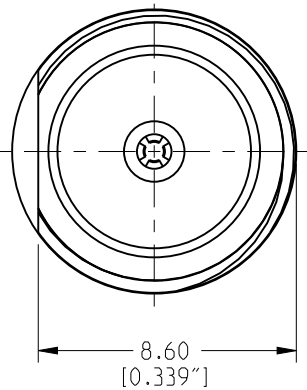
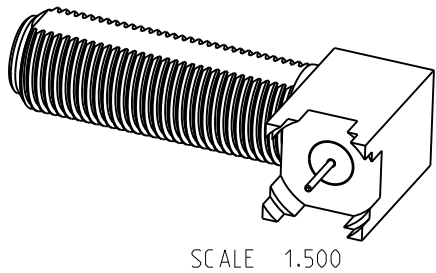


PCB MOUNTING PATTERN

222128-12		REVISIONS			
DRAWING NO.	REV	DESCRIPTION	DATE	ECO	APPR
THIRD ANGLE PROJ.	NC	INITIAL RELEASE	22-Aug-07	--	--
	A	REVISE INSULATOR MATERIAL TO TEFLON	08-Jan-08	--	--
	B	REMOVE POLY PRO INSULATOR FROM MATERIAL CALLOUT, ADD SPECIFICATIONS	10-Jul-08	--	--
	C	REVISE LEG LENGTH TO 3.2MM, BODY CENTERLINE TO 8.1MM	25-Jul-08	--	--
	D	CONTACT PROJECTION 1.50 [0.059"] MAX WAS 2.40 [0.095"] MAX	12-Jul-11	2196	HR



PANEL CUTOUT



INSULATOR	TEFLON	NATURAL	2
CONTACT PIN	BRASS	BRT. TIN	1
CONTACT PIN	BRASS	BRT. TIN	1
BODY	BRASS	NICKEL	1
DESCRIPTION	MATERIAL	FINISH	QTY

UNLESS OTHERWISE SPECIFIED, DIMENSIONS ARE IN INCHES AND TOLERANCES ARE:
2 PLACE DECIMAL 3 PLACE DECIMAL ANGLES
±.015 (0,381 mm) ±.005 (0,127 mm) ± 1°

NOTICE - These drawings, specifications, or other data (1) are, and remain the property of Amphenol Corp. (2) must be returned upon request; and (3) are confidential and not to be disclosed to any person other than those to whom they are given by Amphenol Corp. The furnishing of these drawings, specifications, or other data by Amphenol Corp., or to any other person to anyone for any purpose is not to be regarded by implication or otherwise in any manner licensing, granting rights or permitting such holder or any other person to manufacture, use or sell any product, process or design, patented or otherwise, that may in any way be related to or disclosed by said drawings, specifications, or other data.

MATERIAL	SEE TABLE
REFERENCE	TASK-698

DRAWN	HARI R	DATE	11-Jul-11
ENGINEER	G.R.S	DATE	25-Jul-08
APPROVED		DATE	
CAD FILE	Root Folder:/connector/:222128-12		

TITLE
F SERIES RIGHT ANGLE
PCB RECEPTACLE SHORT
BODY

Amphenol
Connex

SCALE: 4.0:1 SHEET 1 OF 1

DWG SIZE	DRAWING NO.	REV
B	222128-12	D