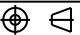
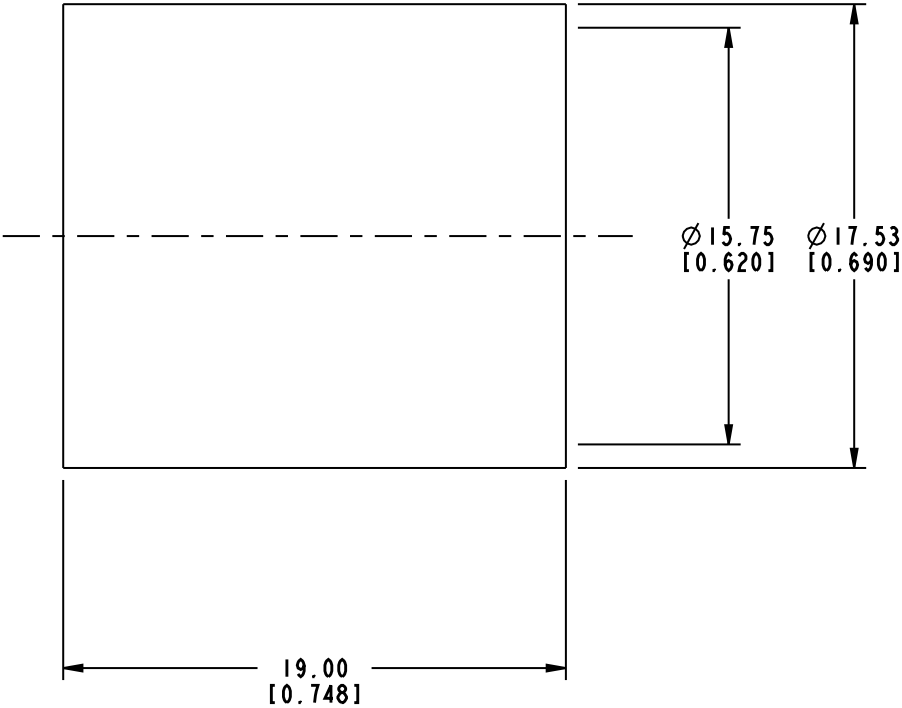
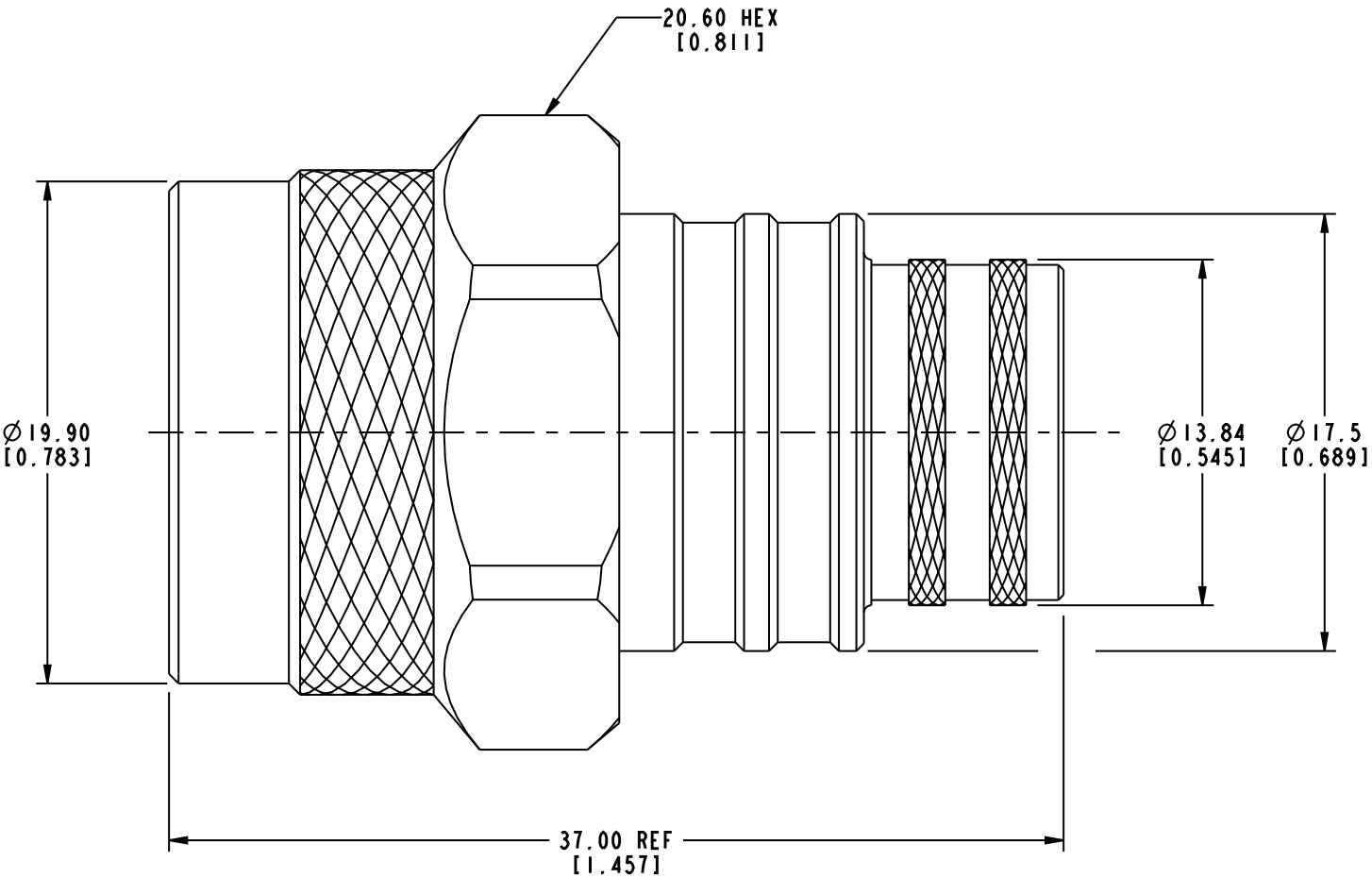
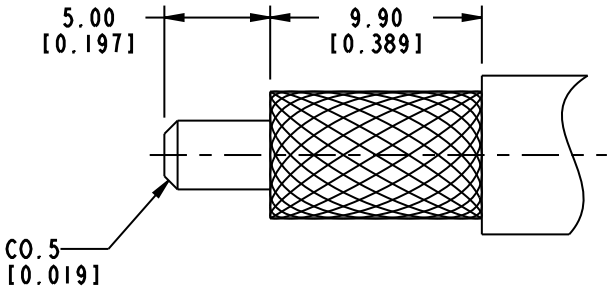


172352		REVISIONS			
DRAWING NO.	REV	DESCRIPTION	DATE	ECO	APPR
THIRD ANGLE PROJ. 	A	RELEASE TO MFG.	12-Aug-09	--	CL



8	FERRULE	COPPER TUBING	ALBALOY	1
7	SHELL	BRASS	ALBALOY	1
6	RETAINING RING	SUS 304	NATURAL	1
5	GASKET	SILICONE	RED	1
4	CONTACT BODY	BRASS	ALBALOY	1
3	BARREL	BRASS	ALBALOY	1
2	INSULATOR	TEFLON	NATRUAL	1
1	CONTACT PIN	PHOSPHOR BRONZE	GOLD	1
NUMBER	DESCRIPTION	MATERIAL	FINISH	QTY



**RECOMMENDED CABLE  
STRIPPING DIMENSIONS**

NOTES:  
1. CRIMPED FERRULE HEX CRIMP SIZE 0.610".

UNLESS OTHERWISE SPECIFIED, DIMENSIONS ARE IN INCHES AND TOLERANCES ARE: 2 PLACE DECIMAL      3 PLACE DECIMAL      ANGLES ±.015 (0,381 mm)      ±.005 (0,127 mm)      ± 1°		MATERIAL	DRAWN	DATE	TITLE N CRIMP PLUG FOR LMR 600 CABLE CONTACT IN BODY	Amphenol Connex	
NOTICE - These drawings, specifications, or other data (1) are, and remain the property of Amphenol Corp. (2) must be returned upon request; and (3) are confidential and not to be disclosed to any person other than those to whom they are given by Amphenol Corp. The furnishing of these drawings, specifications, or other data by Amphenol Corp., or to any other person to anyone for any purpose is not to be regarded by implication or otherwise in any manner licensing, granting rights or permitting such holder or any other person to manufacture, use or sell any product, process or design, patented or otherwise, that may in any way be related to or disclosed by said drawings, specifications, or other data.	ENGINEER		DATE				
	REFERENCE	CLEMENT	12-Aug-09	APPROVED			
			CAD FILE	DWG SIZE	DRAWING NO.	REV	
			Root folder:\N\172352	B	172352	A	