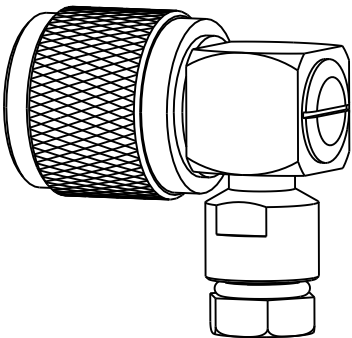
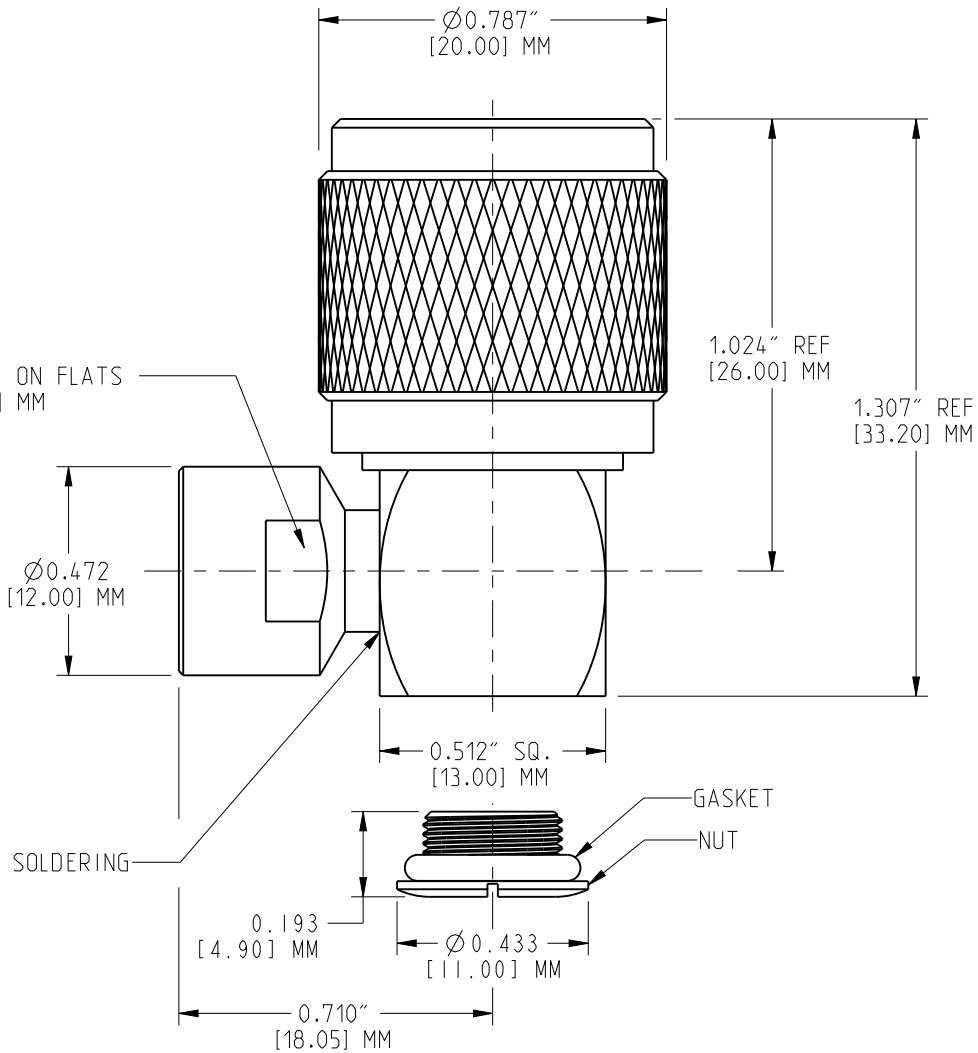
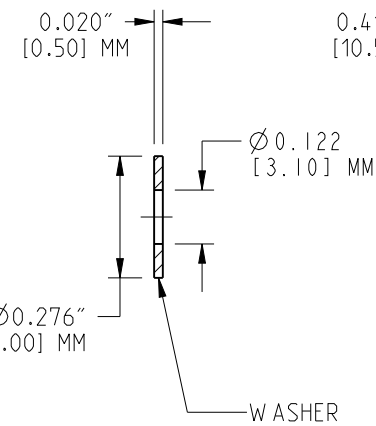
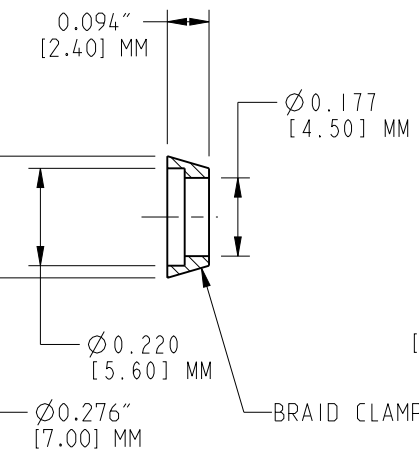
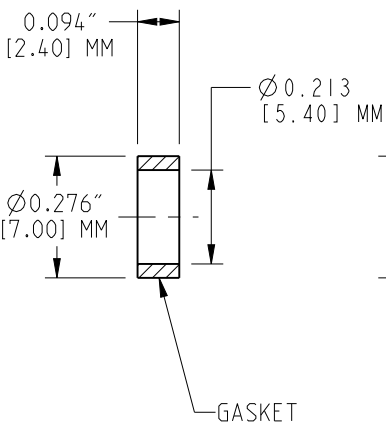
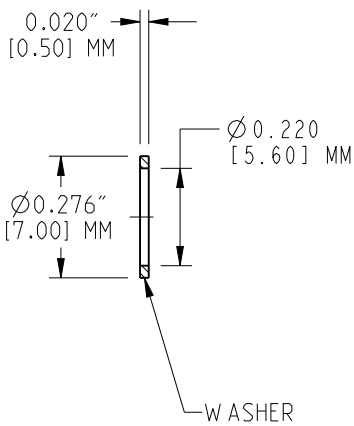
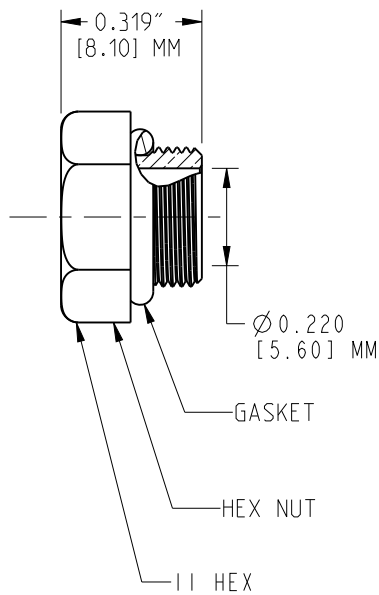


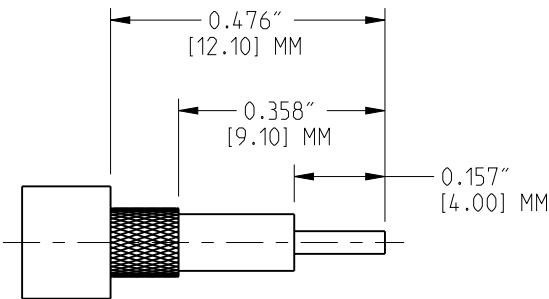
- NOTE:
- CONTACT PIN TO SOLDER
  - IP 67 RATED



SCALE 1.250



RECOMMENDED CABLE STRIPPING  
DIMENSIONS



10	NUT	BRASS	WHITE BRONZE	1
9	HEX NUT	BRASS	WHITE BRONZE	1
8	WASHER	BRASS	WHITE BRONZE	1
7	GASKET	SILICONE	RED	1
6	BRAID CLAMP	BRASS	WHITE BRONZE	1
5	WASHER	BRASS	WHITE BRONZE	1
4	GASKET	SILICONE	RED	1
3	CONTACT PIN	BRASS	GOLD	1
2	INSULATOR	TEFLON	NATURAL	1
1	HOUSING WITH BODY	BRASS	WHITE BRONZE	1
NO	DESCRIPTION	MATERIAL	FINISH	QTY

UNLESS OTHERWISE SPECIFIED, DIMENSIONS ARE IN INCHES AND TOLERANCES ARE: 2 PLACE DECIMAL 3 PLACE DECIMAL ANGLES ±.015 (0,381 mm) ±.005 (0,127 mm) ± 1°	MATERIAL  SEE TABLE	DRAWN HARI R	DATE 20-Apr-11	TITLE TYPE N R/A CLAMP PLUG USING (RG-58C/U,58/ U,142A/U,223/U)	Amphenol Connex		
		ENGINEER HARI R	DATE 20-Apr-11				
	REFERENCE  TASK- 620	APPROVED	DATE		SCALE: 3.2:1 SHEET 1 OF 1		
		CAD FILE Root Folder/Connector/172316-10	DWG SIZE B	DRAWING NO. 172316-10	REV A		

NOTICE - These drawings, specifications, or other data (1) are, and remain the property of Amphenol Corp. (2) must be returned upon request; and (3) are confidential and not to be disclosed to any person other than those to whom they are given by Amphenol Corp. The furnishing of these drawings, specifications, or other data by Amphenol Corp., or to any other person to anyone for any purpose is not to be regarded by implication or otherwise in any manner licensing, granting rights or permitting such holder or any other person to manufacture, use or sell any product, process or design, patented or otherwise, that may in any way be related to or disclosed by said drawings, specifications, or other data.