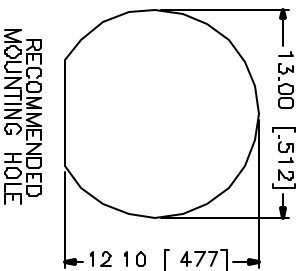
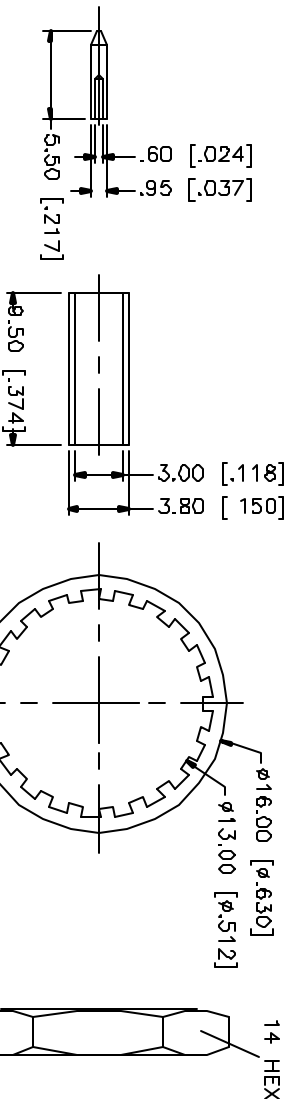
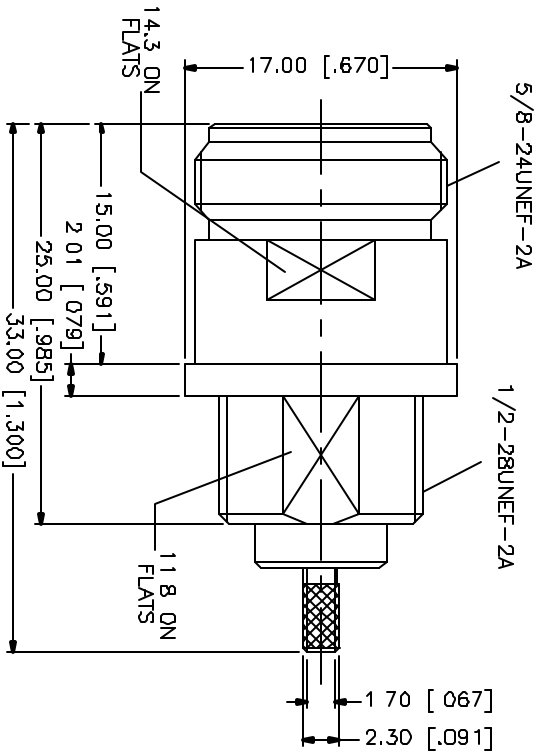
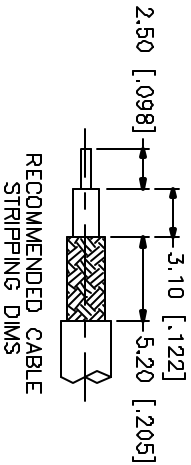



REV.	DATE	DESCRIPTION
A	06/10/01	ADD CRIMP NOTES



- CRIMP NOTES.
1. CRIMPED FERRULE
HEX CRIMP SIZE .128"
 2. CRIMPED CONTACT PIN
SQ CRIMP SIZE 0.7mm
 3. MAX. PANEL THICKNESS = 3mm

DESCRIPTION	MATERIAL	FINISH	UNLESS OTHERWISE SPECIFIED DIMENSIONS ARE IN MILLIMETERS DIMENSIONS IN [] ARE IN INCHES FOR CUSTOMER REFERENCE ONLY		APPROVALS	DATE	<div> Connector Corporation</div>				
1 BODY	BRASS	NICKEL	UNLESS OTHERWISE SPECIFIED TOLERANCES FOR MILLIMETERS ARE: 0.5-6 = ± 0.2 6-30 = ± 0.4 30-120 = ± 0.6 120-315 = ± 1 315-1000 = ± 1.6 1000-2000 = ± 2.4	DRAWN G.R.S.	CHECKED	06/10/01	TITLE N FRONT BULKHEAD CRIMP JACK (FOR RG-174/U, 188A/U, 316/U)				
2 INSULATOR	TEFLON	NATURAL									
3 CONTACT PIN	PHOS. BRONZE	GOLD									
4 FERRULE	COPPER	NICKEL									
5 LOCK WASHER	BRASS	NICKEL									
6 HEX NUT	BRASS	NICKEL					SIZE	FSCM NO.	DWG. NO.	REV.	
7							A	99001	172283.DWG	A	
8			DO NOT SCALE DRAWINGS				SCALE	NA	PART NO.	SHEET	1 OF 1

DO NOT SCALE DRAWING



172283.DWG