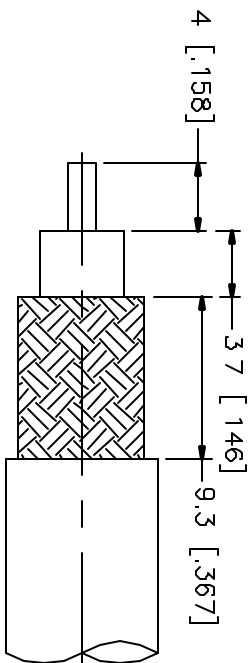
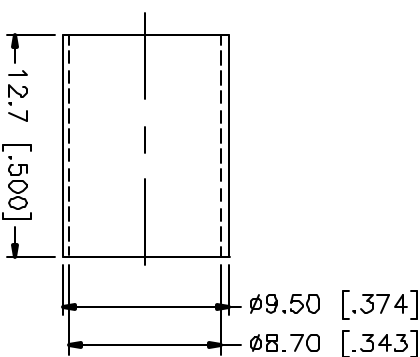
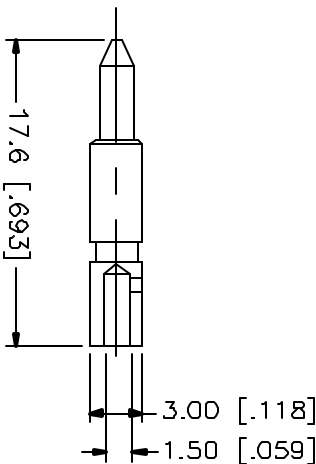
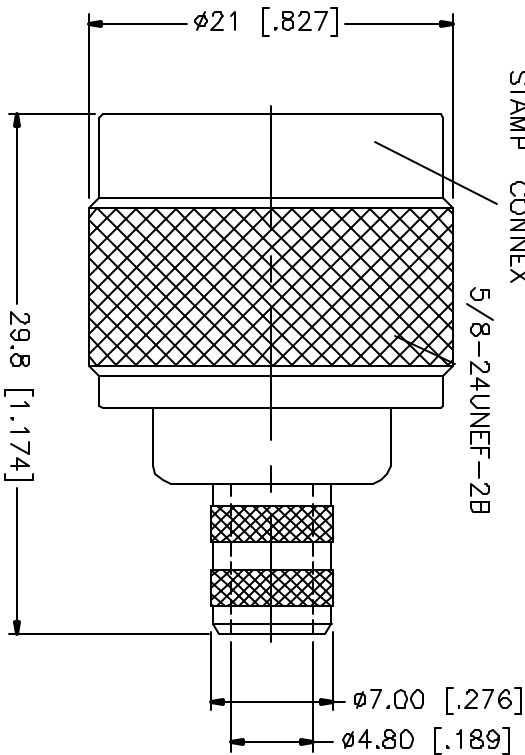


| REV. | DATE | DESCRIPTION |
|------|----------|-----------------|
| NC | 10/15/01 | INITIAL RELEASE |




RECOMMENDED
CABLE STRIPPING DIM'S



CRIMP NOTES:

1. CRIMPED FERRULE
HEX CRIMP SIZE .324"
2. CRIMPED CONTACT PIN
HEX CRIMP SIZE .100"

| DESCRIPTION | MATERIAL | FINISH | UNLESS OTHERWISE SPECIFIED DIMENSIONS ARE IN MILLIMETERS DIMENSIONS IN [] ARE IN INCHES FOR CUSTOMER REFERENCE ONLY | | APPROVALS | DATE | <div> Connector Corporation</div> <div>TITLE N CRIMP PLUG (FOR BELDEN 9861 CABLE)</div> | | | | | | | | | |
|---------------|----------|---------|--|----------------------|-----------|----------|--|--|--|--|-------|----------|------------|--------|-------|--------|
| 1 SHELL | BRASS | NICKEL | UNLESS OTHERWISE SPECIFIED TOLERANCES FOR MILLIMETERS ARE: 0.5-.5 = ± 0.2 6-.30 = ± 0.4 30-120 = ± 0.6 120-315 = ± 1 315-1000 = ± 1.6 1000-2000 = ± 2.4 | DRAWN | G.R.S. | 10/15/01 | | | | | | | | | | |
| 2 BODY | BRASS | NICKEL | | CHECKED | | | | | | | | | | | | |
| 3 INSULATOR | TEFLON | NATURAL | | ISSUED | | | | | | | | | | | | |
| 4 CONTACT PIN | BRASS | GOLD | | | | | | | | | | | | | | |
| 5 FERRULE | COPPER | NICKEL | | | | | | | | | | | | | | |
| 6 | | | | | | | | | | | SIZE | FROM NO. | DWG. NO | REV | | |
| 7 | | | | | | | | | | | A | 99001 | 172290.DWG | NC | | |
| 8 | | | | DO NOT SCALE DRAWING | | | | | | | SCALE | NA | PART NO. | 172290 | SHEET | 1 OF 1 |