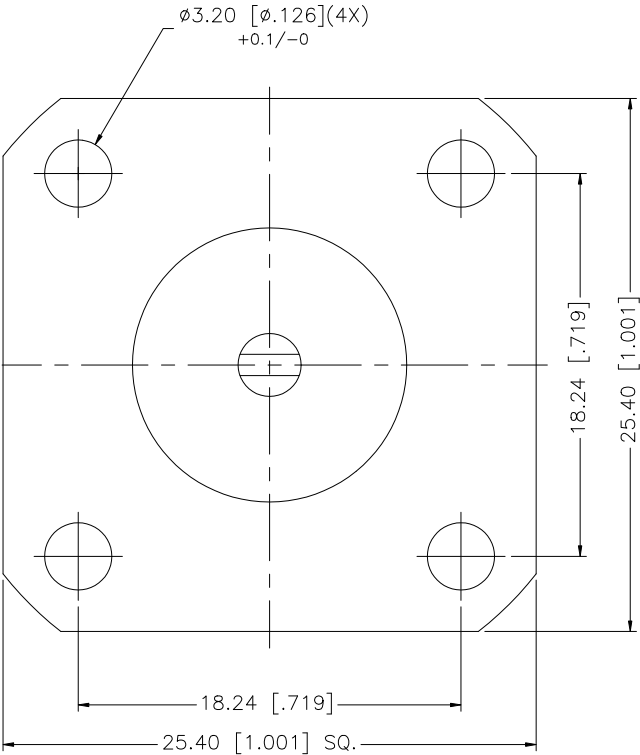
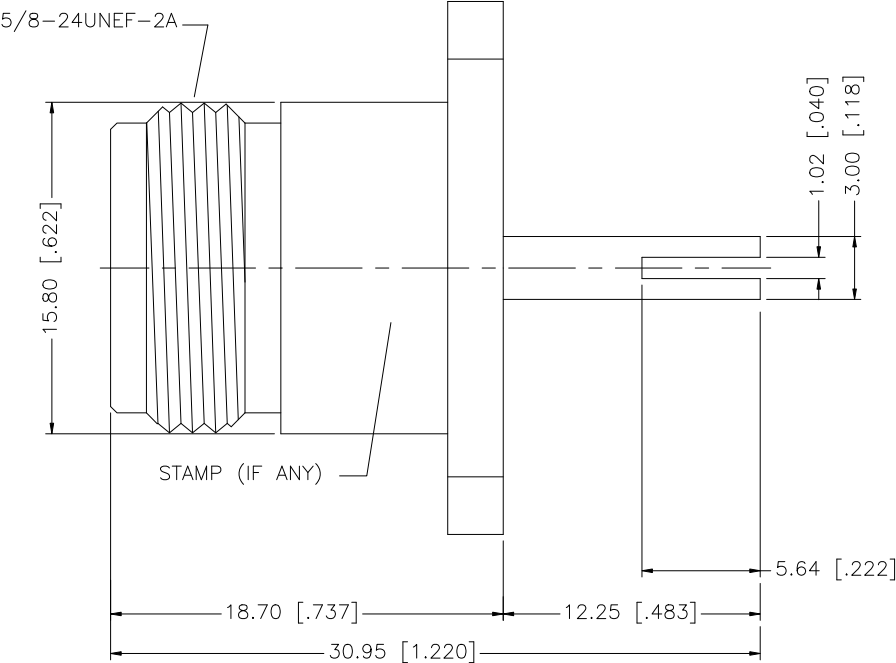


REV.	DATE	DESCRIPTION
NC	07/08/07	INITIAL RELEASE



8					<div>UNLESS OTHERWISE SPECIFIED DIMENSIONS ARE IN MILLIMETERS. DIMENSIONS IN [] ARE IN INCHES AND FOR CUSTOMER REFERENCE ONLY.</div> <div>UNLESS OTHERWISE SPECIFIED TOLERANCES FOR MILLIMETERS ARE: 0.5 – 8mm ± 0.20mm 8 – 30mm ± 0.40mm 30 – 120mm ± 0.50mm</div> <div>UNLESS OTHERWISE SPECIFIED TOLERANCES FOR INCHES ARE: .020 – .315 = ± 0.007” .315 – 1.180 = ± 0.015” 1.180 – 4.724 = ± 0.020”</div> <div>DO NOT SCALE DRAWING</div>	APPROVALS	DATE	<div>Amphenol Connex</div>					
7						DRAWN	G.R.S.						07/08/07
6						CHECKED			PART DESCRIPTION N PANEL RECEPTACLE (0.483” LONG, .040” SLOTTED POST)				
5						ISSUED							
4						SHEET	1 OF 1		PART NO. 172228–24				
3	CONTACT PIN	BRASS	GOLD	1	CAD FILE								
2	INSULATOR	TEFLON	NATURAL	1	C:/172/172228–24.DWG			DWG. NO.	172228–24.DWG	REV. NC	SIZE A	SCALE NA	
1	BODY	BRASS	NICKEL	1									
DESCRIPTION MATERIAL FINISH QTY													