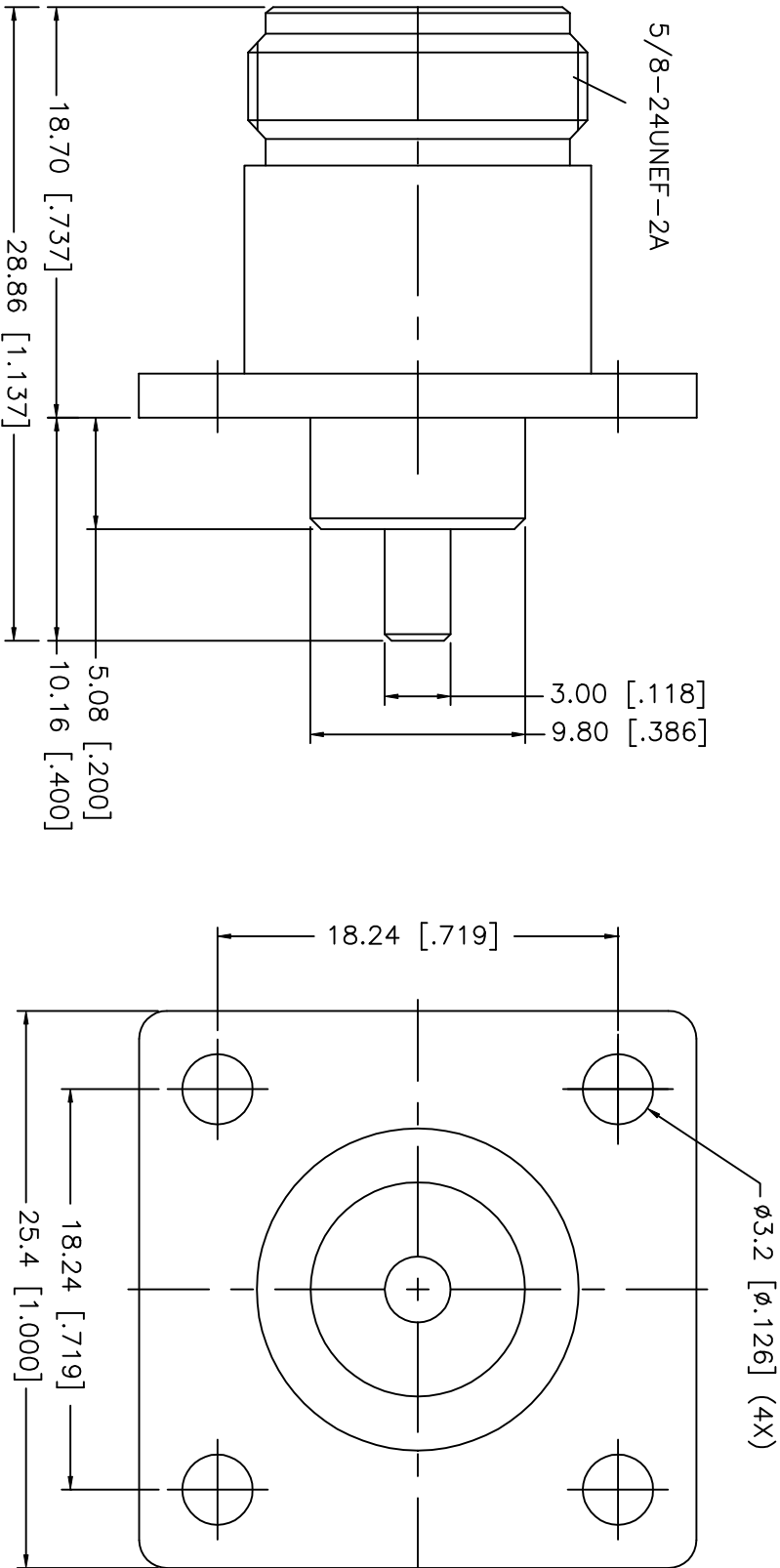


REV.	DATE	DESCRIPTION
NC	01/29/02	INITIAL RELEASE



DESCRIPTION	MATERIAL	FINISH	UNLESS OTHERWISE SPECIFIED DIMENSIONS ARE IN MILLIMETERS DIMENSIONS IN [ ] ARE IN INCHES FOR CUSTOMER REFERENCE ONLY			APPROVALS		DATE	<div>Amphenol - Connex</div> <div>CONNECTOR CORPORATION</div> <div>TITLE N PANEL RECEPTACLE JACK - EXTENDED TEFLON</div> <div>SIZEFSQM NO.99001DWG. NO.1722228-11.DWGREV. NC</div> <div>SCALENAPART NO.1722228-11SHEET1 OF 1</div>			
1 BODY	BRASS	NICKEL	UNLESS OTHERWISE SPECIFIED TOLERANCES FOR MILLIMETERS ARE: 0.5-6 = ± 0.2 6-30 = ± 0.4 30-120 = ± 0.6 120-315 = ± 1 315-1000 = ± 1.6 1000-2000 = ± 2.4			DRAWN G.R.S.		01/29/02				
2 INSULATOR	TEFLON	NATURAL				CHECKED						
3 CONTACT PIN	BER. COPPER	GOLD				ISSUED						
4												
5												
6												
7												
8			DO NOT SCALE DRAWINGS									

UNLESS OTHERWISE SPECIFIED  
TOLERANCES FOR MILLIMETERS ARE:  
0.5-6 = ± 0.2  
6-30 = ± 0.4  
30-120 = ± 0.6  
120-315 = ± 1  
315-1000 = ± 1.6  
1000-2000 = ± 2.4

DO NOT SCALE DRAWINGS