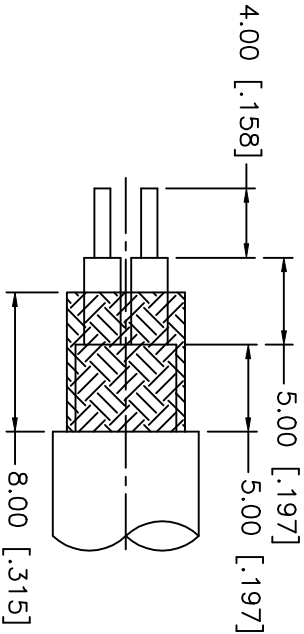
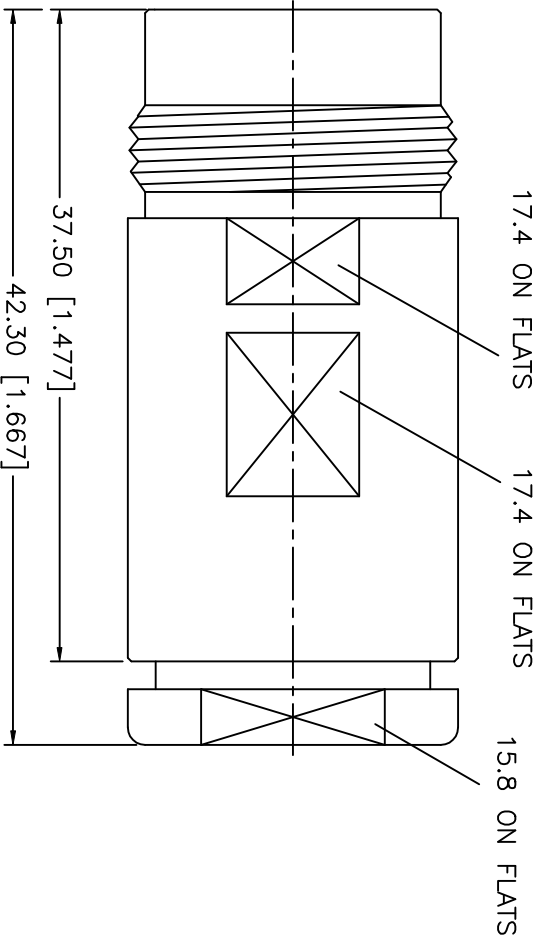
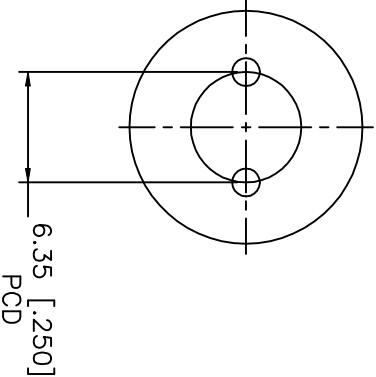


REV.	DATE	DESCRIPTION
NC	09/04/98	INITIAL RELEASE



RECOMMENDED  
CABLE STRIPPING DIM'S



DESCRIPTION	MATERIAL	FINISH	UNLESS OTHERWISE SPECIFIED DIMENSIONS ARE IN MILLIMETERS DIMENSIONS IN [ ] ARE IN INCHES FOR CUSTOMER REFERENCE ONLY			
1 BODY	BRASS	NICKEL	DRAWN	G.R.S.	DATE	
2 CONTACT PIN	PHOS. BRONZE	GOLD	CHECKED		09/04/98	
3 INSULATOR	PBT	NATURAL	ISSUED			
4						
5						
6						
7						
8						

UNLESS OTHERWISE SPECIFIED  
DIMENSIONS ARE IN MILLIMETERS  
DIMENSIONS IN [ ] ARE IN INCHES  
FOR CUSTOMER REFERENCE ONLY

UNLESS OTHERWISE SPECIFIED  
TOLERANCES FOR MILLIMETERS ARE:

0.5-6 = ± 0.2  
6-30 = ± 0.4  
30-120 = ± 0.6  
120-315 = ± 1  
315-1000 = ± 1.6  
1000-2000 = ± 2.4

DO NOT SCALE DRAWING

TWIN COAXIAL – STRAIGHT JACK				REV.
SIZE	FSQM NO.	DWG. NO.		NC
A	99001	162102.DWG		
SCALE	NA	PART NO.	162102	SHEET
				1 OF 1

