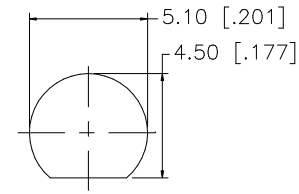
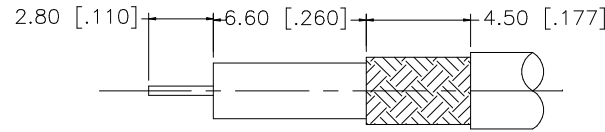


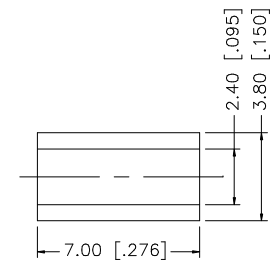
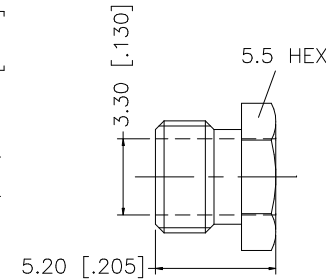
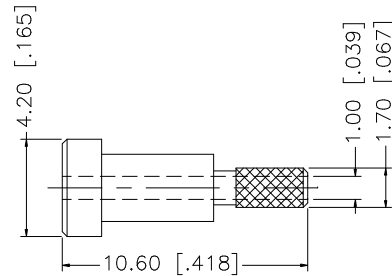
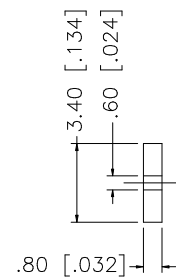
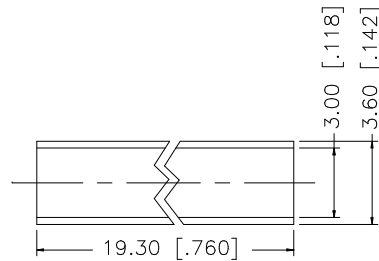
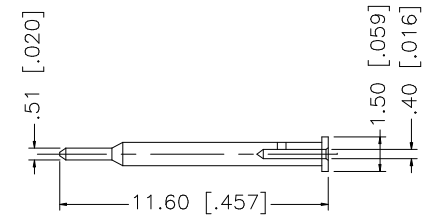
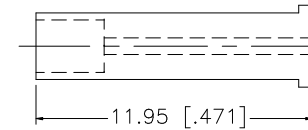
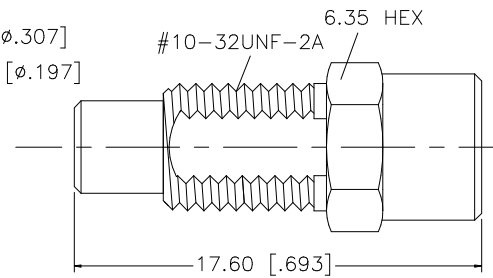
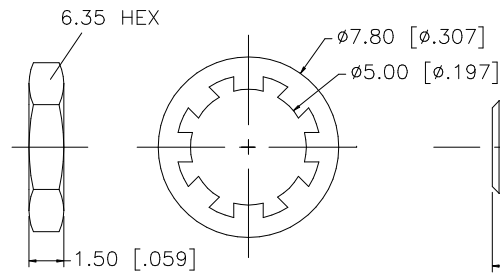
REV.	DATE	DESCRIPTION
A	03/20/03	UPDATE DRAWING FORMAT



RECOMMENDED  
MOUNTING HOLE



RECOMMENDED CABLE  
STRIPPING DIMENSIONS



1. CRIMPED FERRULE  
HEX CRIMP SIZE .128"

8					UNLESS OTHERWISE SPECIFIED DIMENSIONS ARE IN MILLIMETERS. DIMENSIONS IN [ ] ARE IN INCHES AND FOR CUSTOMER REFERENCE ONLY.	APPROVALS	DATE	<h1>Amphenol Connex</h1>			
7					UNLESS OTHERWISE SPECIFIED TOLERANCES FOR MILLIMETERS ARE: 0.5 - 8mm ± 0.20mm 8 - 30mm ± 0.40mm 30 - 120mm ± 0.50mm	DRAWN G.R.S.	03/20/03				
6	HEAT SHRINK TUBE			1	UNLESS OTHERWISE SPECIFIED TOLERANCES FOR INCHES ARE: .020 - .315 ± 0.007" .315 - 1.180 ± 0.015" 1.180 - 4.724 ± 0.020"	CHECKED		<b>SMC BULKHEAD CRIMP JACK (FOR RG-178B/U, 196A/U CABLE)</b>			
5	FERRULE	COPPER	GOLD	1		ISSUED					
4	HEX NUT	BRASS	GOLD	1		SHEET 1 OF 1		<b>152137</b>			
3	CONTACT PIN	BRASS	GOLD	1							
2	INSULATOR	TEFLON	NATURAL	1				<b>152137</b>			
1	HOUSING/BODY	BRASS	GOLD	1							
	DESCRIPTION	MATERIAL	FINISH	QTY	DO NOT SCALE DRAWING	CAD FILE C:/152/152137.DWG	DWG. NO. 152137.DWG	REV. A	SIZE A	SCALE NA	