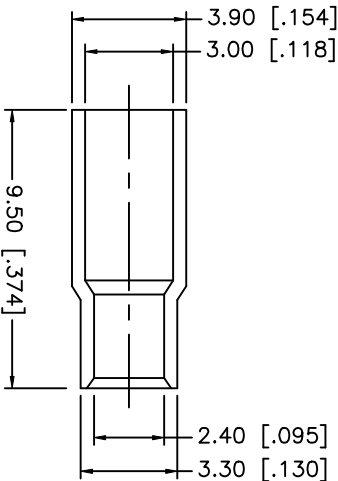
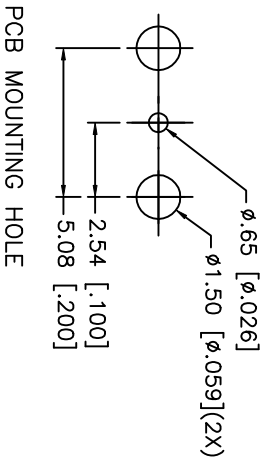
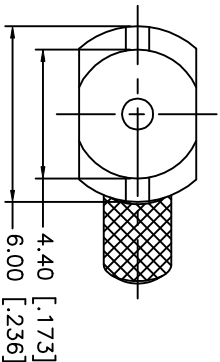
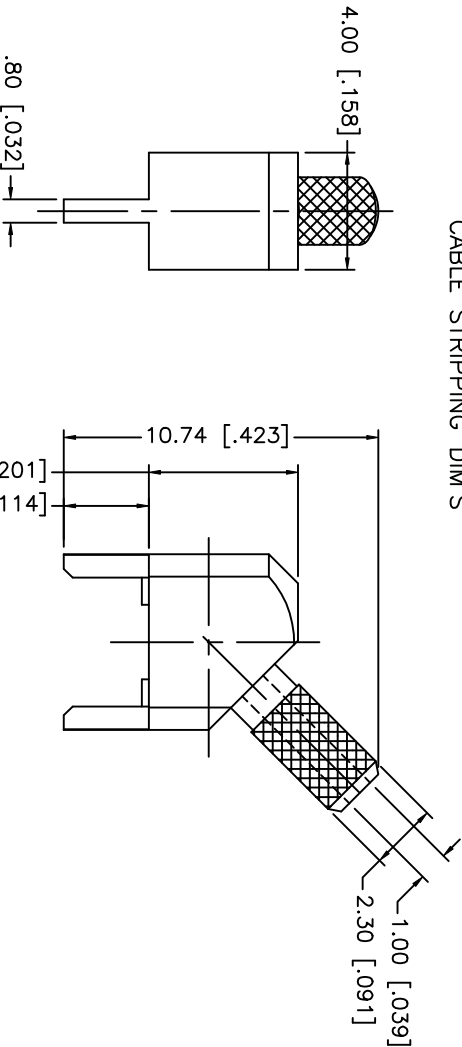
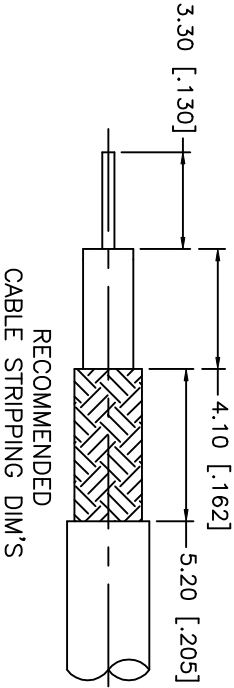


REV.	DATE	DESCRIPTION
NC	03/21/02	INITIAL RELEASE



CRIMP NOTES:
1. CRIMPED FERRULE
HEX CRIMP SIZE .128"

DESCRIPTION	MATERIAL	FINISH	UNLESS OTHERWISE SPECIFIED DIMENSIONS ARE IN MILLIMETERS		APPROVALS		DATE	<div>Amphenol - Connex</div> <div>CONNECTOR CORPORATION</div> <div>45 * PCB CABLE TERMINAL (FOR RG-178B/U, 196A/U CABLE)</div>			
1	BODY	BRASS	GOLD	DIMENSIONS IN [] ARE IN INCHES FOR CUSTOMER REFERENCE ONLY	DRAWN	G.R.S.	03/21/02				
2	BARREL	BRASS	GOLD		CHECKED			SIZE	FSCM NO.	DWG. NO.	REV.
3	FERRULE	BRASS	GOLD		ISSUED			A	99001	142315.DWG	NC
4				UNLESS OTHERWISE SPECIFIED TOLERANCES FOR INCHES ARE: .XXX = ± 0.005" .XX = ± 0.010" .X = ± 0.020"				SCALE	NA	PART NO.	SHEET
5										142315	1 OF 1
6											
7											
8				DO NOT SCALE DRAWING							