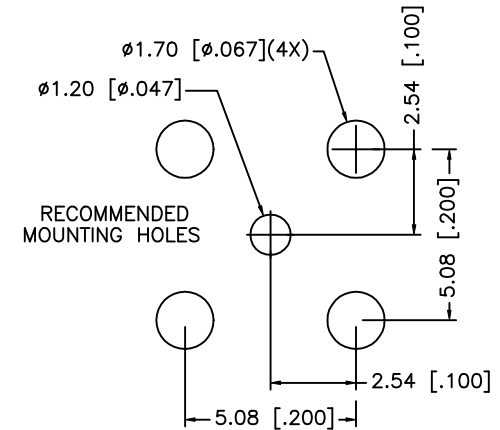
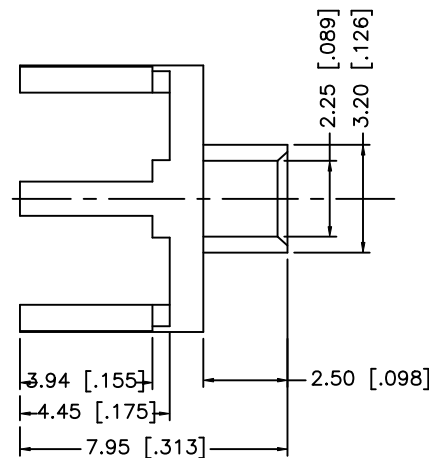
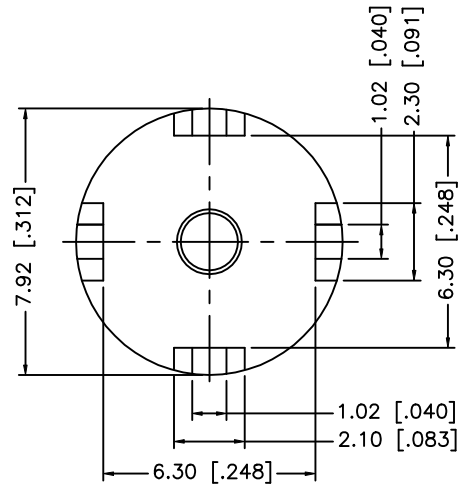
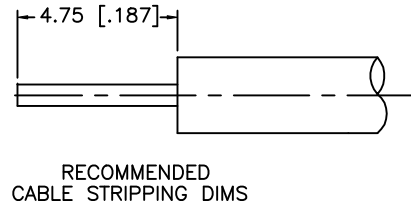


REV.	DATE	DESCRIPTION
NC	02/27/02	INITIAL RELEASE



NOTES: FINISH (PLATING THICKNESS IN MICRO-INCHES)

1. BRASS PER QQ-B-626
2. GOLD PL. 3 MIN. THICK OVER NICKEL PL.  
100 MIN. THICK OVER COPPER STRIKE.

DESCRIPTION	MATERIAL	FINISH	UNLESS OTHERWISE SPECIFIED DIMENSIONS ARE IN MILLIMETERS	APPROVALS	DATE	<b>Amphenol - Connex</b> <b>CONNECTOR CORPORATION</b>			
1 BODY	BRASS	GOLD	DIMENSIONS IN [ ] ARE IN INCHES FOR CUSTOMER REFERENCE ONLY	DRAWN G.R.S.	02/27/02				
2				CHECKED		TITLE PCB MOUNT CABLE TERMINAL (FOR .085", .086" CABLE)			
3			UNLESS OTHERWISE SPECIFIED TOLERANCES FOR MILLIMETERS ARE: 0.5-6 = ± 0.2 6-30 = ± 0.4 30-120 = ± 0.6 120-315 = ± 1 315-1000 = ± 1.6 1000-2000 = ± 2.4	ISSUED					
4						SIZE	FSCM NO.	DWG. NO.	REV.
5						A	99001	142313.DWG	NC
6						SCALE	PART NO.	SHEET	
7						NA	142313	1 OF 1	
8			DO NOT SCALE DRAWING						