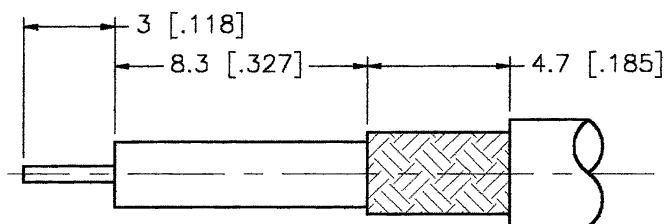
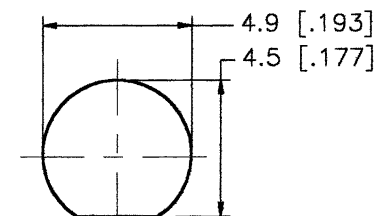


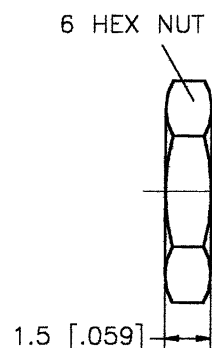
REV.	DATE	DESCRIPTION
NC	03/06/00	INITIAL RELEASE



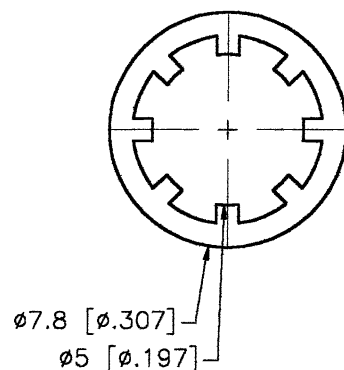
RECOMMENDED
CABLE STRIPPING DIM'S



RECOMMENDED
MOUNTING HOLE

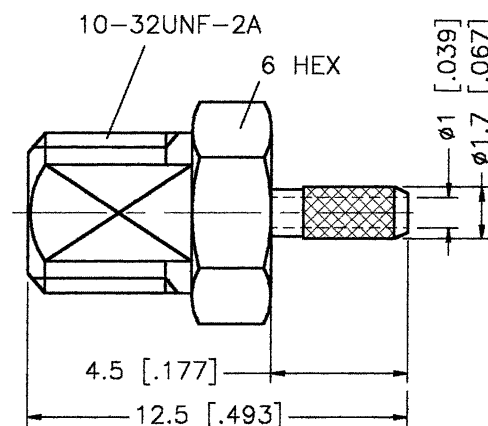


6 HEX NUT



7.8 [0.307]

5 [0.197]

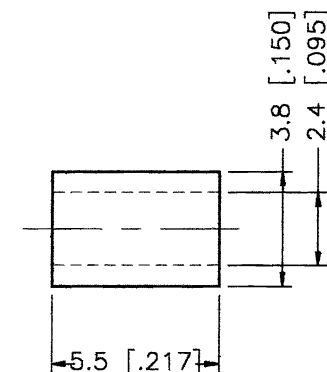


10-32UNF-2A

6 HEX


4.5 [.177]

12.5 [.493]



CRIMP NOTES:

1. CRIMPED FERRULE
HEX CRIMP SIZE .128"

DESCRIPTION	MATERIAL	FINISH	UNLESS OTHERWISE SPECIFIED DIMENSIONS ARE IN MILLIMETERS	APPROVALS	DATE				
1 BODY	BRASS	NICKEL	DIMENSIONS IN [] ARE IN INCHES FOR CUSTOMER REFERENCE ONLY	DRAWN G.R.S.	03/06/00				
2 FERRULE	COPPER	NICKEL		CHECKED		TITLE BULKHEAD CABLE TERMINATION (FOR RG-178B/U, 196A/U CABLE)			
3 LOCK WASHER	BRASS	NICKEL	UNLESS OTHERWISE SPECIFIED TOLERANCES FOR MILLIMETERS ARE: 0.5-6 = ± 0.2 6-30 = ± 0.4 30-120 = ± 0.6 120-315 = ± 1 315-1000 = ± 1.6 1000-2000 = ± 2.4	ISSUED		SIZE	FSCM NO.	DWG. NO.	REV.
4 HEX NUT	BRASS	NICKEL				A	99001	142275.DWG	NC
5									
6									
7									
8			DO NOT SCALE DRAWING			SCALE	NA	PART NO. 142275	SHEET 1 OF 1