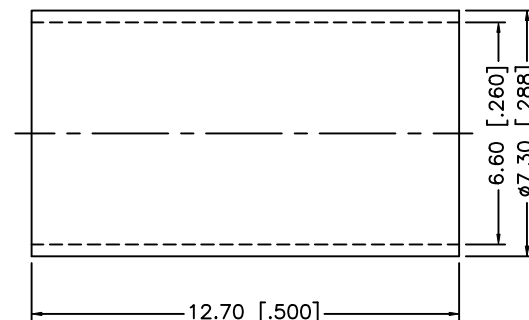
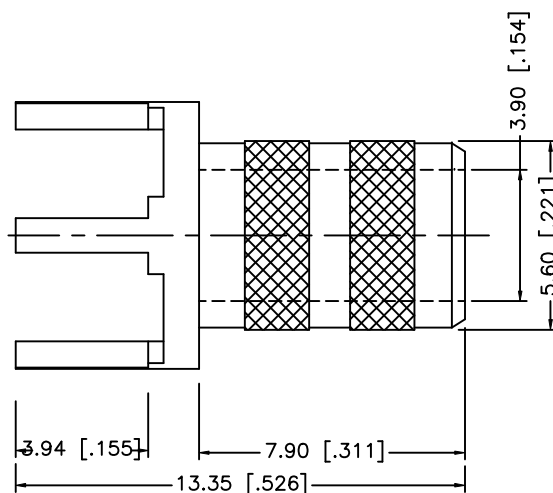
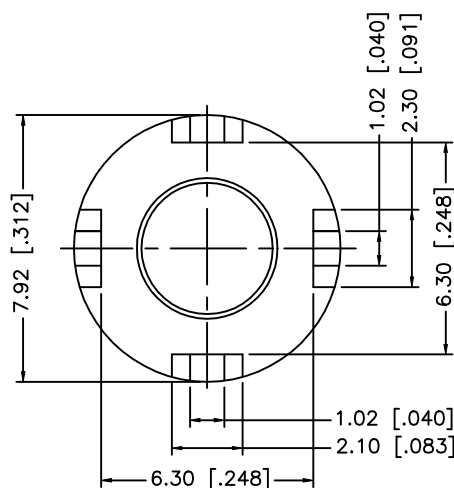
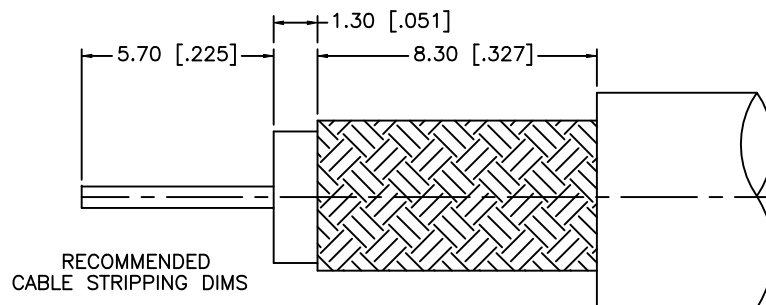
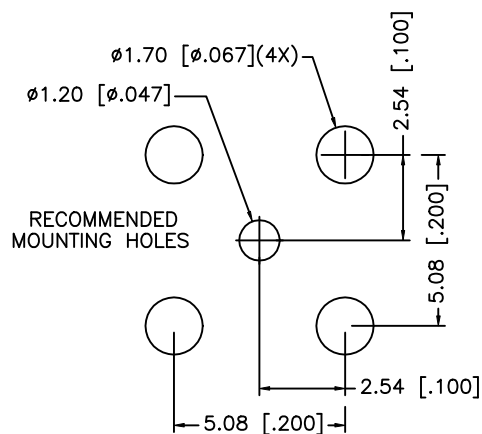


REV.	DATE	DESCRIPTION
NC	02/23/00	INITIAL RELEASE



CRIMP NOTES:
1. CRIMPED FERRULE
HEX CRIMP SIZE .255"

DESCRIPTION				MATERIAL		FINISH		UNLESS OTHERWISE SPECIFIED DIMENSIONS ARE IN MILLIMETERS		APPROVALS		DATE		<div>Amphenol - Connex</div> <div>CONNECTOR CORPORATION</div>			
1 BODY				BRASS		GOLD		DIMENSIONS IN [] ARE IN INCHES FOR CUSTOMER REFERENCE ONLY		DRAWN G.R.S.		02/23/00					
2 FERRULE				COPPER		GOLD				CHECKED				TITLE PCB MOUNT CABLE TERMINATION (FOR RG-59/U CABLE)			
3								UNLESS OTHERWISE SPECIFIED TOLERANCES FOR MILLIMETERS ARE: 0.5-6 = ± 0.2 6-30 = ± 0.4 30-120 = ± 0.6 120-315 = ± 1 315-1000 = ± 1.6 1000-2000 = ± 2.4		ISSUED							
4														SIZE A FSCM NO. 99001 DWG. NO. 142264.DWG REV. NO.			
5																	
6														SCALE NA PART NO. 142264 SHEET 1 OF 1			
7																	
8								DO NOT SCALE DRAWING									