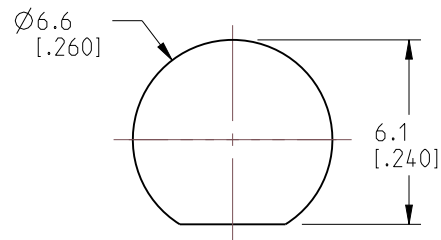


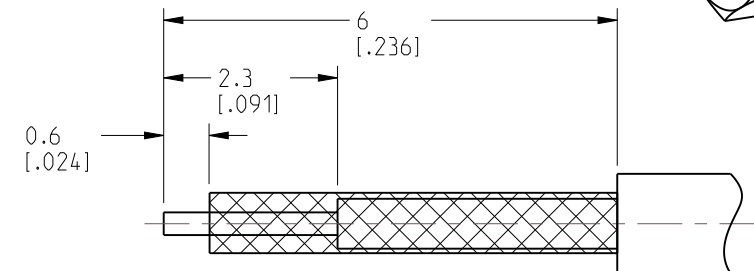
1. MATERIALS AND FINISHES:
BODY & BULLET CONTACT - BRASS, GOLD PLATING
CONTACT - BeCu, GOLD PLATING
SLEEVE, INNER FERRULE, LOCK WASHER & HEX NUT - BRASS, NICKEL PLATING
INSULATOR & INSULATOR DISC - PTFE, NATURAL
GASKET & O-RING - SILICONE RUBBER, RED
2. ELECTRICAL:
A. IMPEDANCE: 50 OHM
B. FREQUENCY RANGE: DC - 6 GHz
C. VSWR: 1.30 MAX. @ DC - 6 GHz
D. DIELECTRIC WITHSTANDING VOLTAGE: 750 VRMS, MIN.
3. MECHANICAL:
A. DURABILITY: 500 CYCLES MIN.
B. TEMPERATURE RANGE: -65°C TO +165°C
C. SEALING: MEETS IP-67 REQUIREMENTS IN UNMATED CONDITION

4. CABLE ASSEMBLY INSTRUCTIONS:
 - A. TRIM CABLE AS SHOWN.
 - B. INSERT CABLE THROUGH INNER FERRULE AND PEEL BRAID BACK OVER INNER FERRULE.
 - C. INSTALL SLEEVE AND INSULATOR DISC OVER CABLE, BOTTOMING ON INNER FERRULE.
 - D. SOLDER BULLET CONTACT TO CABLE CENTER CONDUCTOR, BOTTOMING ON INSULATOR DISC.
 - E. INSERT CABLE INTO CONNECTOR UNTIL IT BOTTOMS.
 - F. CRIMP BODY OVER INNER FERRULE USING .105" HEX.

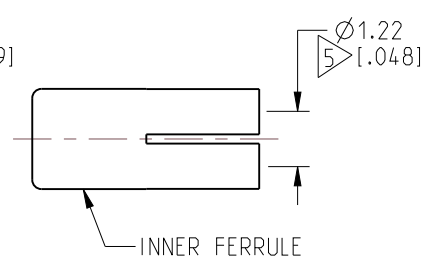
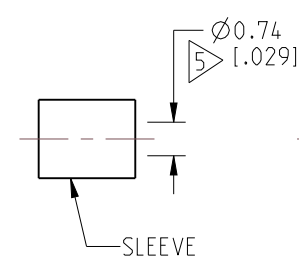
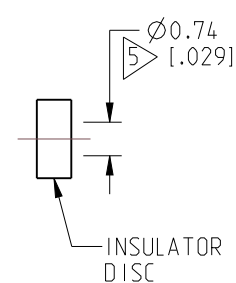
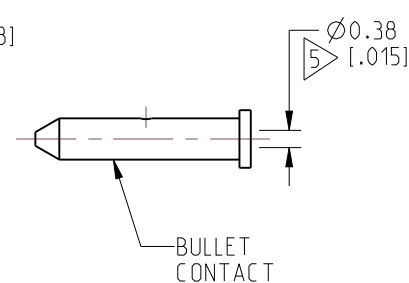
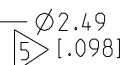
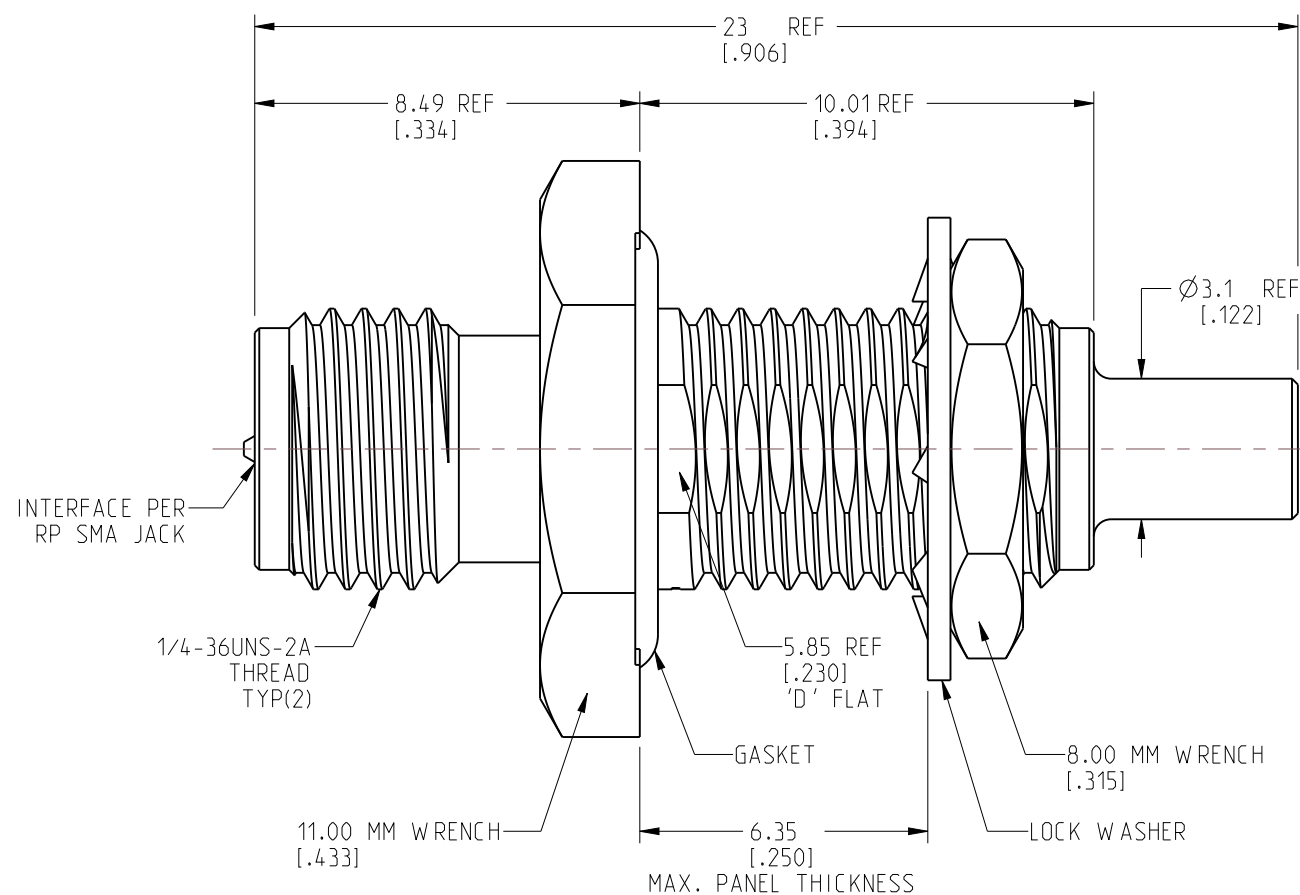
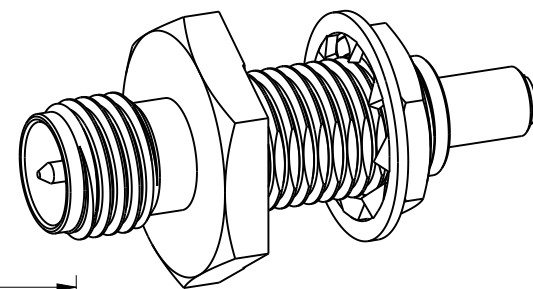
5. SHOWS CABLE ENTRY DIMENSIONS.



RECOMMENDED MOUNTING HOLE DIMENSIONS



RECOMMENDED CABLE STRIPPING DIMENSIONS



ALL OTHER SHEETS ARE FOR INTERNAL USE ONLY

NOTICE: These drawings, specifications, or other data (1) are, and remain the property of Amphenol corp. (2) must be returned upon request; and (3) are confidential and not to be disclosed to any person other than those to whom they are given by Amphenol Corp. The furnishing of these drawings, specifications, or other data by Amphenol Corp., or to any other person to anyone for any purpose is not to be regarded by implication or otherwise in any manner licensing, granting rights to permitting such holder or any other person to manufacture, use or sell any product, process or design, patented or otherwise, that may in any way be related to or disclosed by said drawings, specifications, or other data.

UNLESS OTHERWISE SPECIFIED
DIMENSIONS ARE METRIC (INCHES) AND TOLERANCES ARE:

<0.5mm = ±0.05mm	[<0.020 = ±0.002]
>0.5 - 6mm = ±0.1mm	[>0.020 - 0.236 = ±0.004]
>6.00 - 30mm = ±0.2mm	[>0.236 - 1.181 = ±0.008]
>30.00 - 120mm = ±0.3mm	[>1.181 - 4.725 = ±0.012]

MATERIAL	SEE NOTES
----------	-----------

TITLE
RP SMA STR BHD JACK FRONT MOUNT IP 67 FOR 1.13 MM CABLE

Amphenol RF

SIZE B	DRAWING NO.	RSMA6311G1-NX3GT30GS-C113-50
	ITEM NO.	616311AAB63RG5F
	PART NO.	132397RP

THIRD ANGLE PROJ. 

REFERENCE
132397

EAR#	10765
------	-------

ANGLES = $\pm 1^\circ$

ENGR.1
VIJAY N M

ENGR.2
M.ZHANG

DATE	26-AUG-21
------	-----------

SHEET NO. 2 OF 2

SCALE: 6.0:1.0

B