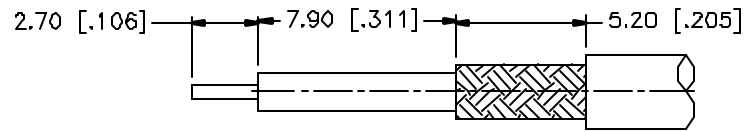
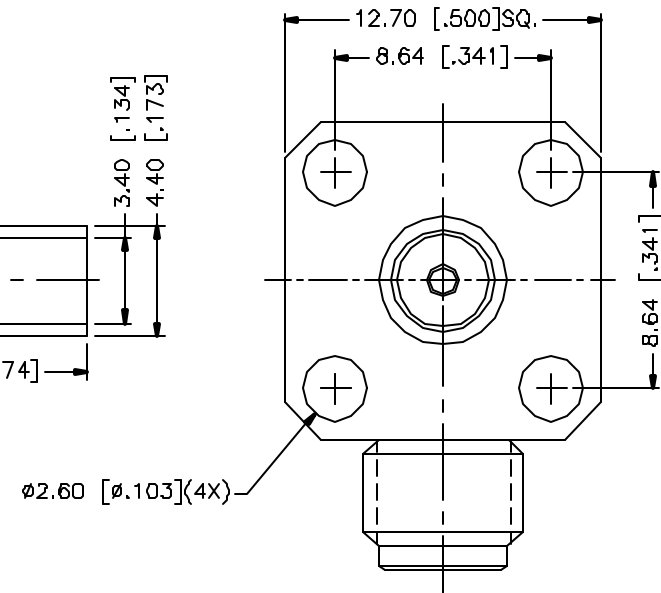
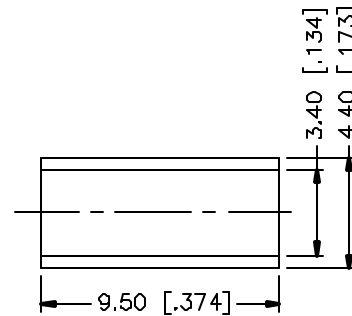
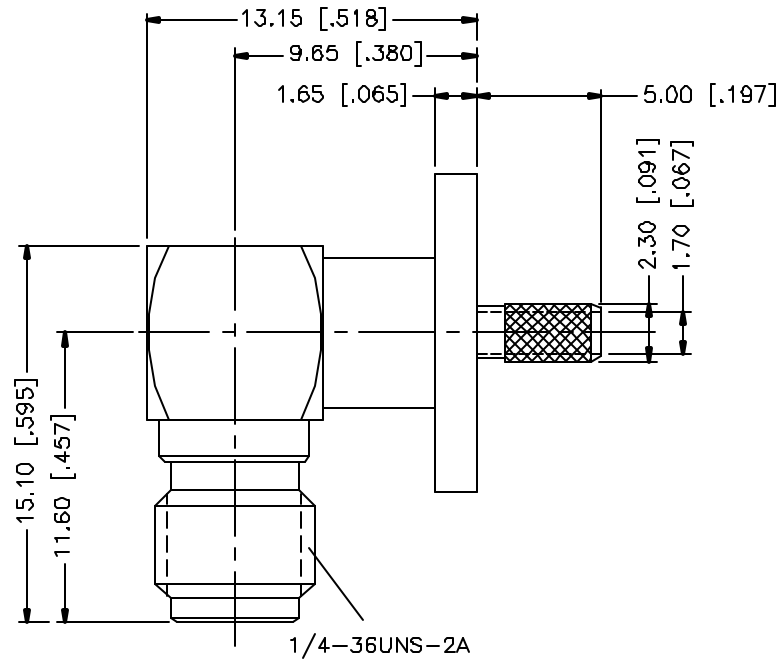
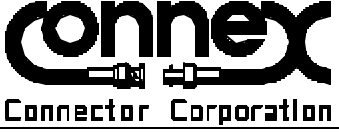


REV.	DATE	DESCRIPTION
NC	04/17/01	INITIAL RELEASE



RECOMMENDED
CABLE STRIPPING DIM'S



DESCRIPTION	MATERIAL	FINISH	UNLESS OTHERWISE SPECIFIED DIMENSIONS ARE IN MILLIMETERS	APPROVALS	DATE				
1 HOUSING	BRASS	GOLD	DIMENSIONS IN [] ARE IN INCHES FOR CUSTOMER REFERENCE ONLY UNLESS OTHERWISE SPECIFIED TOLERANCES FOR MILLIMETERS ARE 0.5-6 = ± 0.2 6-30 = ± 0.4 30-120 = ± 0.6 120-315 = ± 1 315-1000 = ± 1.6 1000-2000 = ± 2.4	DRAWN G.R.S.	04/17/01				
2 CONTACT PIN	BER. COPPER	GOLD		CHECKED		TITLE SMA R/A PANEL JACK (FOR RG-316 DOUBLE BRAID CABLE)			
3 INSULATOR	TEFLON	NATURAL		ISSUED		SIZE A	FSDM NO. 99001	DWG NO. 132321.DWG	REV NC
4 FERRULE	COPPER	GOLD				SCALE NA	PART NO. 132321	SHEET 1 OF 1	
5 COVER	BRASS	GOLD							
6									
7									
8			DO NOT SCALE DRAWING						