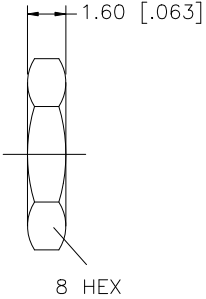
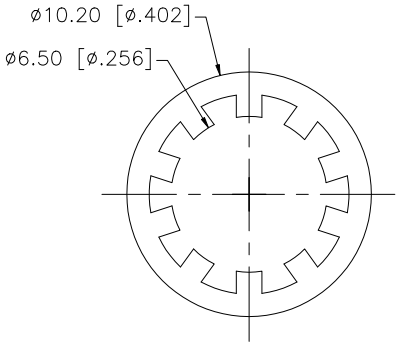
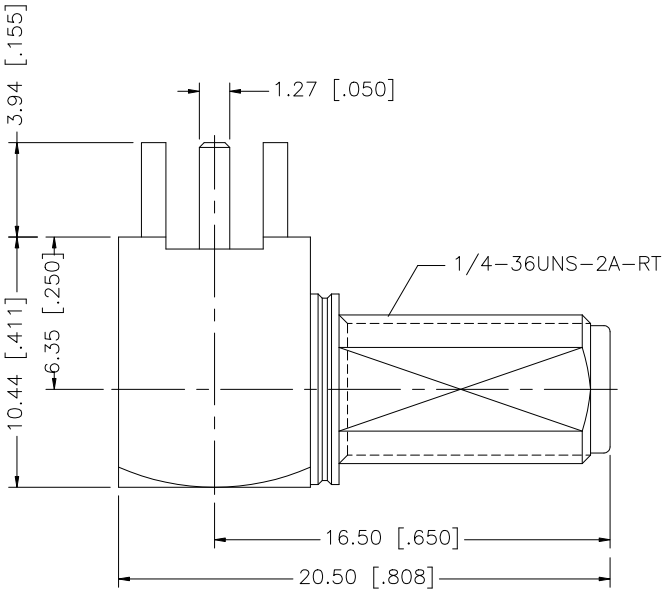
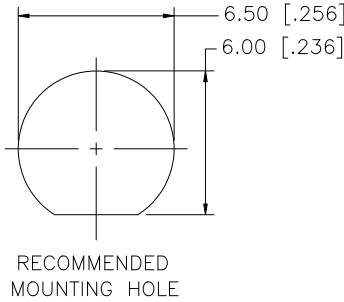
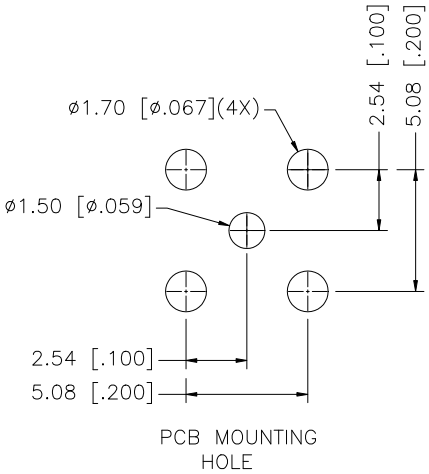
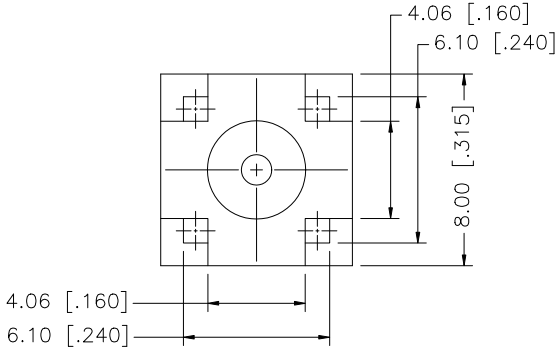


REV.	DATE	DESCRIPTION
NC	02/28/01	INITIAL RELEASE
A	07/31/07	REVISE PART ORIENTATION



8					<div>UNLESS OTHERWISE SPECIFIED DIMENSIONS ARE IN MILLIMETERS. DIMENSIONS IN [] ARE IN INCHES AND FOR CUSTOMER REFERENCE ONLY.</div> <div>UNLESS OTHERWISE SPECIFIED TOLERANCES FOR MILLIMETERS ARE: 0.5 – 8mm ± 0.20mm 8 – 30mm ± 0.40mm 30 – 120mm ± 0.50mm</div> <div>UNLESS OTHERWISE SPECIFIED TOLERANCES FOR INCHES ARE: .020 – .315 = ± 0.007” .315 – 1.180 = ± 0.015” 1.180 – 4.724 = ± 0.020”</div> <div>DO NOT SCALE DRAWING</div>	APPROVALS		DATE		Amphenol Connex					
7	HEX NUT	BRASS	GOLD	1		DRAWN	G.R.S.	07/31/07							
6	LOCK WASHER	BRASS	GOLD	1		CHECKED			PART DESCRIPTION SMA R/A BULKHEAD P.C. MOUNT JACK W/ REVERSE THREADS						
5	CONTACT PIN	BRASS	GOLD	1		ISSUED									
4	INSULATOR	TEFLON	NATURAL	1		SHEET	1 OF 1		PART NO. 132203RT						
3	CONTACT PIN	BER. COPPER	GOLD	1											
2	INSULATOR	TEFLON	NATURAL	1					DWG. NO. 132203RT.DWG						
1	HOUSING/BODY	BRASS	GOLD	1											
DESCRIPTION		MATERIAL	FINISH	QTY		CAD FILE		C:/132/132203RT.DWG		REV.	A	SIZE	A	SCALE	NA