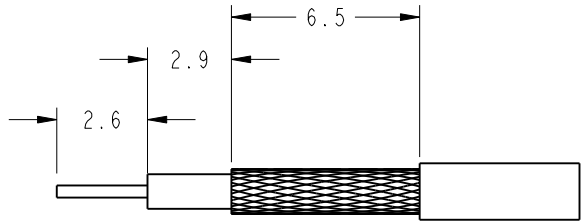
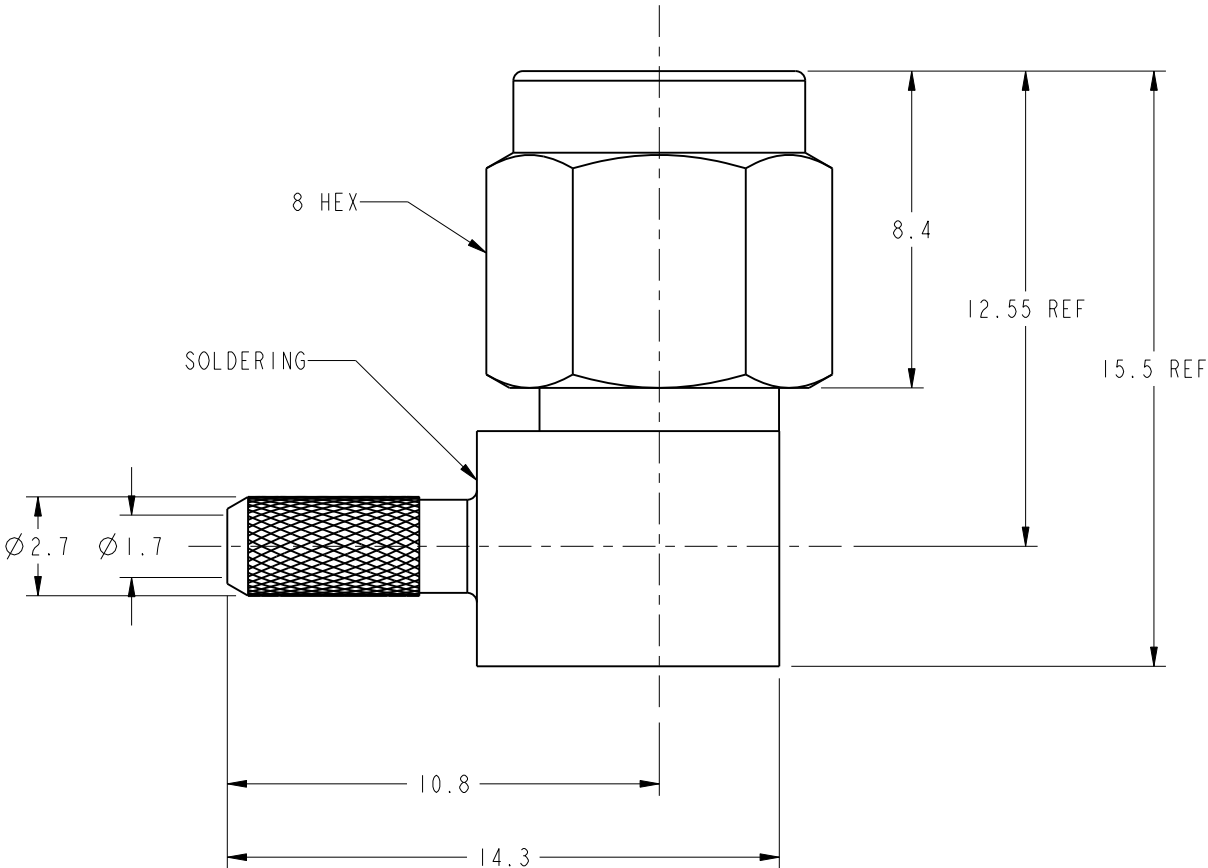
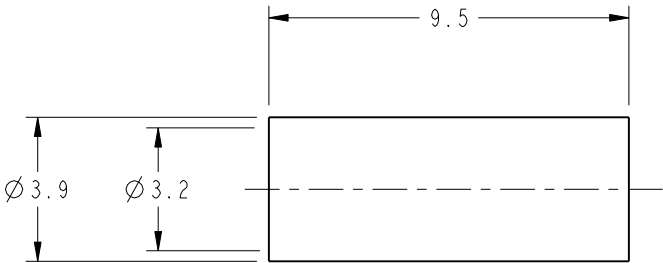


- NOTES:
1. GOLD PLATE (.000003 MIN) THICK OVER COPPER PLATE (.000100 MIN) THICK
 2. CRIMPED FERRULE: HEX CRIMP SIZE .128"
 3. CONTACT PIN TO SOLDER



RECOMMENDED
CABLE STRIPPING DIM'S.



8	FERRULE	BRASS	NOTE 1	1
7	COVER	BRASS	NOTE 1	1
6	GASKET	SILICONE	RED	1
5	RETAINER RING	BeCu	NATURAL	1
4	CONTACT PIN	BRASS	NOTE 1	1
3	INSULATOR	PTFE	NATURAL	1
2	HOUSING W/BARREL	BRASS	NOTE 1	1
1	SHELL	BRASS	NOTE 1	1
#	DESCRIPTION	MATERIAL	FINISH	QTY

UNLESS OTHERWISE SPECIFIED, DIMENSIONS ARE IN INCHES AND TOLERANCES ARE: 2 PLACE DECIMAL ±.015 (0,381 mm) 3 PLACE DECIMAL ±.005 (0,127 mm) ANGLES ± 1°	MATERIAL	DRAWN C. McGRATH	DATE 06-May-09	TITLE SMA R/A CRIMP PLUG (FOR RG-174/U, 188A/U, 316/U)	Amphenol Connex		
		ENGINEER K. CAPOZZI	DATE 06-May-09				
	REFERENCE	APPROVED	DATE				
		CAD FILE I:\SMA\132123-11\132123-11		DWG SIZE B	DRAWING NO. 132123-11	REV 01	