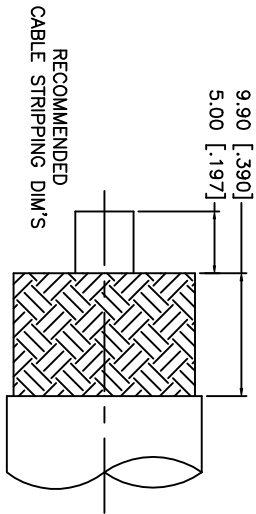
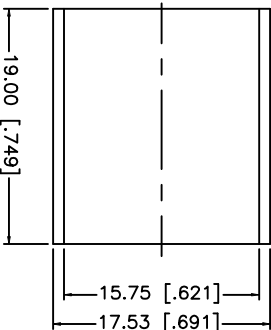
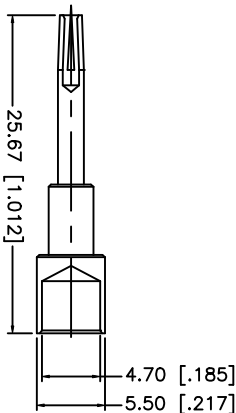
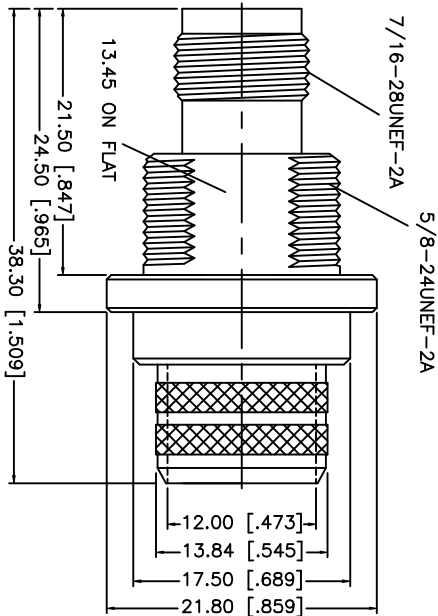
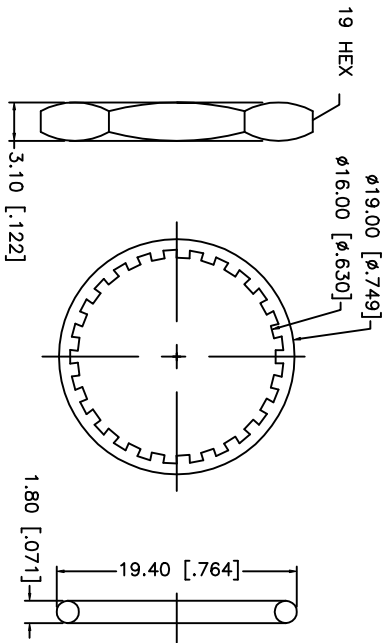
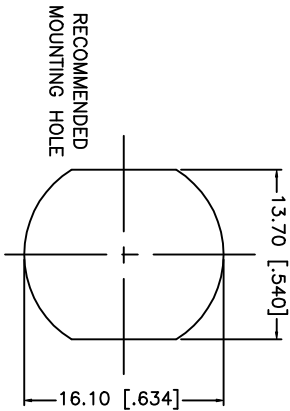


REV.	DATE	DESCRIPTION
NC	03/17/02	INITIAL RELEASE



- CRIMP NOTES:
1. CRIMPED FERRULE
HEX CRIMP SIZE .600"
 2. CONTACT PIN TO SOLDER
 3. MAX. PANEL THICKNESS = 6mm

DESCRIPTION	MATERIAL	FINISH	UNLESS OTHERWISE SPECIFIED DIMENSIONS ARE IN MILLIMETERS		APPROVALS	DATE	<div>Amphenol-Connex</div> <div>CONNECTOR CORPORATION</div> <div>TNC BULKHEAD CRIMP JACK (FOR LMR 600 CABLE)</div>					
1 BODY	BRASS	NICKEL	DIMENSIONS IN [] ARE IN INCHES FOR CUSTOMER REFERENCE ONLY		DRAWN G.R.S.	03/17/02						
2 INSULATOR	TEFLON	NATURAL			CHECKED							
3 CONTACT PIN	PHOS. BRONZE	GOLD	UNLESS OTHERWISE SPECIFIED TOLERANCES FOR MILLIMETERS ARE: 0.5-6 = ± 0.2 6-30 = ± 0.4 30-120 = ± 0.6 120-315 = ± 1 315-1000 = ± 1.6 1000-2000 = ± 2.4		ISSUED							
4 FERRULE	COPPER	NICKEL					TITLE		SIZE	FSQM NO.	DWG. NO.	REV.
5							A		99001		122477.DWG	NC
6							SCALE		NA	PART NO.	122477	SHEET
7												1 OF 1
8			DO NOT SCALE DRAWING									