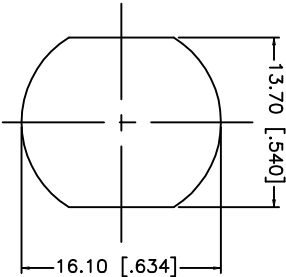
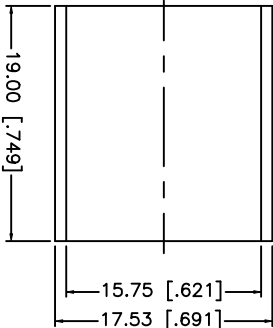
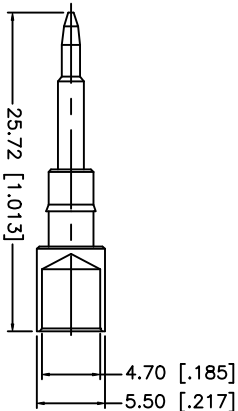
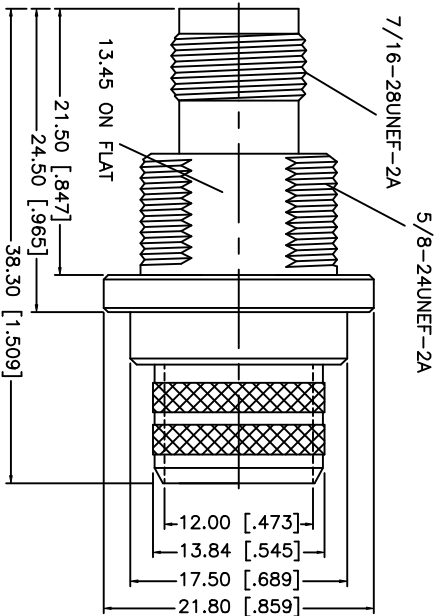
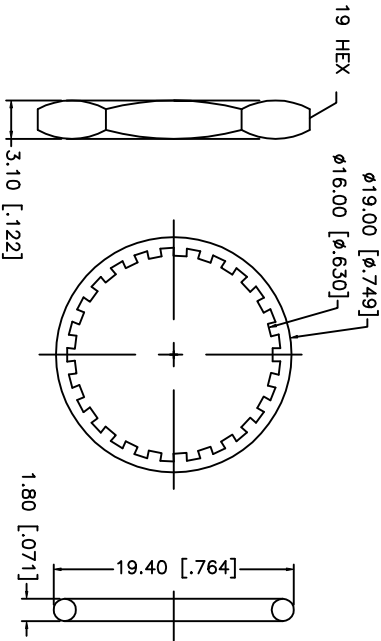


REV.	DATE	DESCRIPTION
NC	03/17/02	INITIAL RELEASE

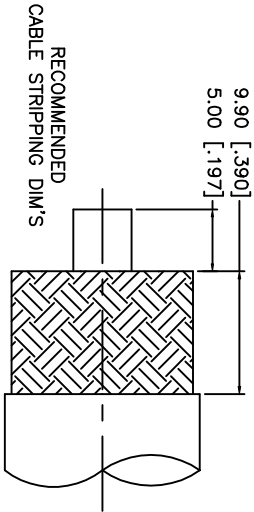


RECOMMENDED
MOUNTING HOLE



CRIMP NOTES:

1. CRIMPED FERRULE
2. HEX CRIMP SIZE .600"
3. MAX. PANEL THICKNESS = 6mm



DESCRIPTION	MATERIAL	FINISH	UNLESS OTHERWISE SPECIFIED DIMENSIONS ARE IN MILLIMETERS	APPROVALS	DATE	Amphenol - Connex CONNECTOR CORPORATION			
1 BODY	BRASS	NICKEL	DIMENSIONS IN [] ARE IN INCHES FOR CUSTOMER REFERENCE ONLY	DRAWN G.R.S.	03/17/02				
2 INSULATOR	TEFLON	NATURAL	CHECKED						
3 CONTACT PIN	PHOS. BRONZE	GOLD	UNLESS OTHERWISE SPECIFIED TOLERANCES FOR MILLIMETERS ARE: 0.5-6 = ± 0.2 6-30 = ± 0.4 30-120 = ± 0.6 120-315 = ± 1 315-1000 = ± 1.6 1000-2000 = ± 2.4	ISSUED		TITLE TNC REVERSE POLARIZED BULKHEAD CRIMP JACK (FOR LMR 600 CABLE)			
4 FERRULE	COPPER	NICKEL							
5									
6									
7									
8			DO NOT SCALE DRAWING			SIZE FSCM NO. DWG. NO. REV. A 99001 122477RP.DWG NC SCALE NA PART NO. 122477RP SHEET 1 OF 1			