

NOTES:

1. MATERIALS AND FINISHES:

BODY - BRASS, NICKEL PLATING
CONTACT - PHOSPHOR BRONZE, GOLD PLATING
CONTACT PIN - BRASS, GOLD PLATING
FERRULE - COPPER, NICKEL PLATING
BARREL - BRASS, NICKEL PLATING
INSULATOR - PTFE, NATURAL

2. ELECTRICAL:

A. IMPEDANCE: 50 OHM, NOMINAL
B. FREQUENCY RANGE: DC 0-3.0 GHz
C. VSWR: 1.300 MAX.
D. D.W.V.: 1500 VRMS, MIN.

3. MECHANICAL:

A. DURABILITY: 500 CYCLES MIN.
B. TEMPERATURE RANGE: -65° C TO +165° C

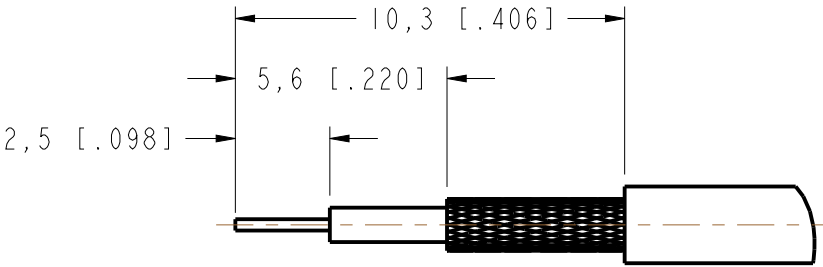
4. CRIMPED FERRULE
HEX CRIMP SIZE .128"

5. CONTACT PIN TO SOLDER OR CRIMPED
SQ. CRIMP SIZE 0.7 (mm)

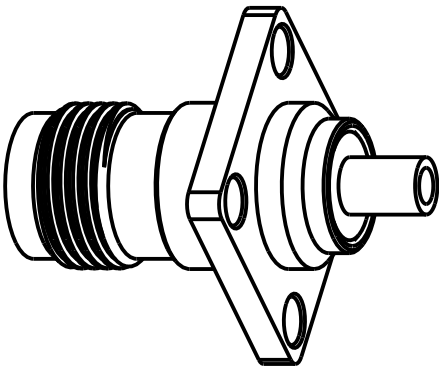
THIRD ANGLE PROJ.

REVISIONS

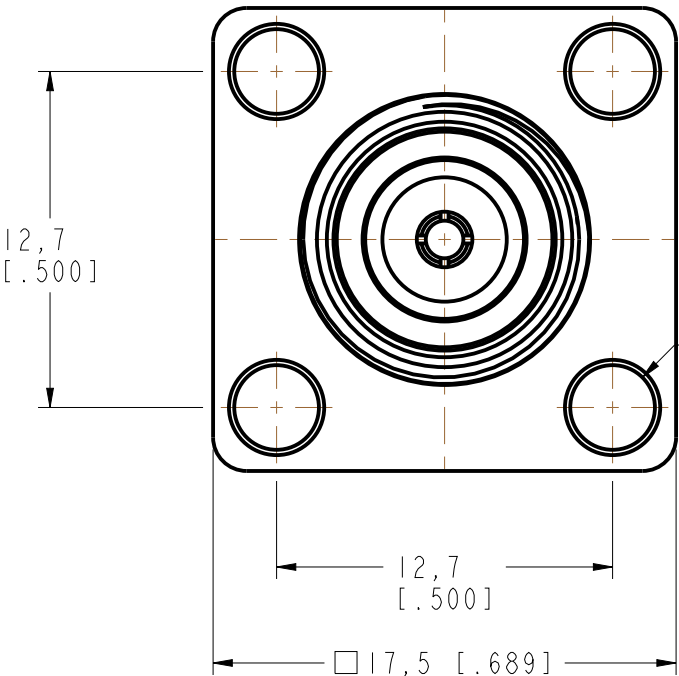
REV	DESCRIPTION	DATE	ECO	APPR
NC	INITIAL RELEASE	04-Mar-10	XXXXX	--
A	RE-DRAWN IN PRO/E	31-Jul-14	ECR 2784	BCG



RECOMMENDED
CABLE STRIPPING
DIMENSIONS

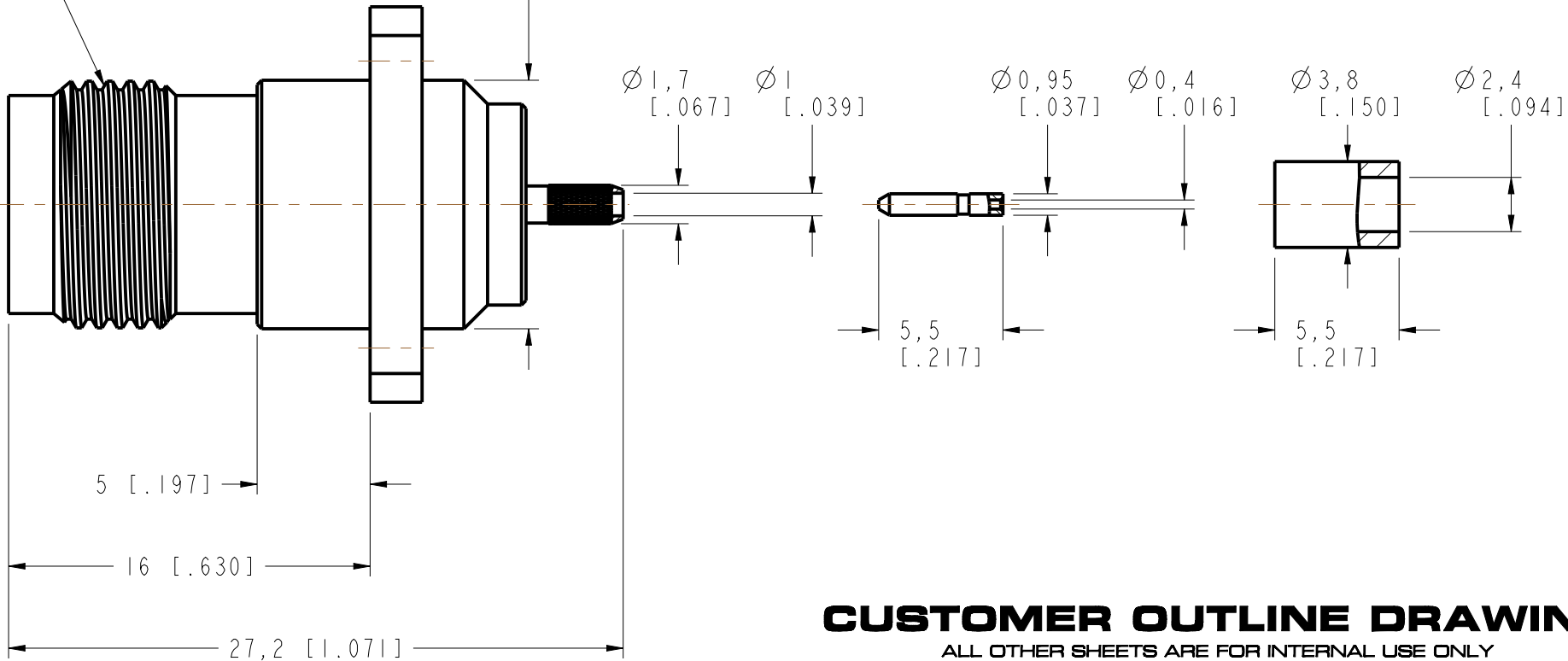


SCALE 2.000



7/16-28UNEF-2A

Ø11 [.433]



CUSTOMER OUTLINE DRAWING
ALL OTHER SHEETS ARE FOR INTERNAL USE ONLY

UNLESS OTHERWISE SPECIFIED, DIMENSIONS ARE IN METRIC AND TOLERANCES ARE:
<0.5mm ± 0.05mm 0.5 - 6mm ± 0.1mm 6 - 30mm ± 0.2mm 30 - 120mm ± 0.3mm ANGLES ±1°

NOTICE - These drawings, specifications, or other data (1) are, and remain the property of Amphenol corp. (2) must be returned upon request; and (3) are confidential and not to be disclosed to any person other than those to whom they are given by Amphenol Corp. the furnishing of these drawings, specifications, or other data by Amphenol Corp., or to any other person to anyone for any purpose is not to be regarded by implication or otherwise in any manner licensing, granting rights to permitting such holder or any other person to manufacture, use or sell any product, process or design, patented or otherwise, that may in any way be related to or disclosed by said drawings, specifications, or other data.

MATERIAL	-
REFERENCE	AND T6521G1-NT3G-196AU-50
CONFIGURATION LEVEL:	In Work
FINISH	

DRAWN	Jona	DATE	04-Aug-14
ENGINEER	SUNDE	DATE	04-Aug-14
APPROVED	SCOTT	DATE	04-Aug-14
CAD FILE			

TITLE	TNC BULKHEAD CRIMP JACK (FOR RG-178B/U 196A/U)
SCALE:	3.5:1.0
SHEET	3 OF 3
DWG SIZE	B

Amphenol RF CONNEX
DRAWING NO.
ITEM NO.
PART NO. 122442