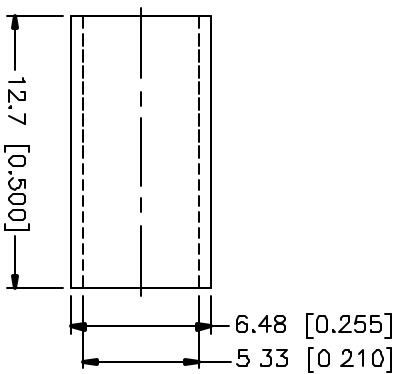
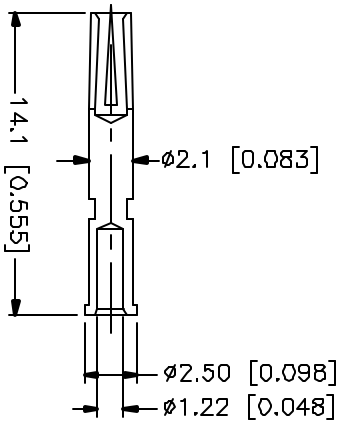
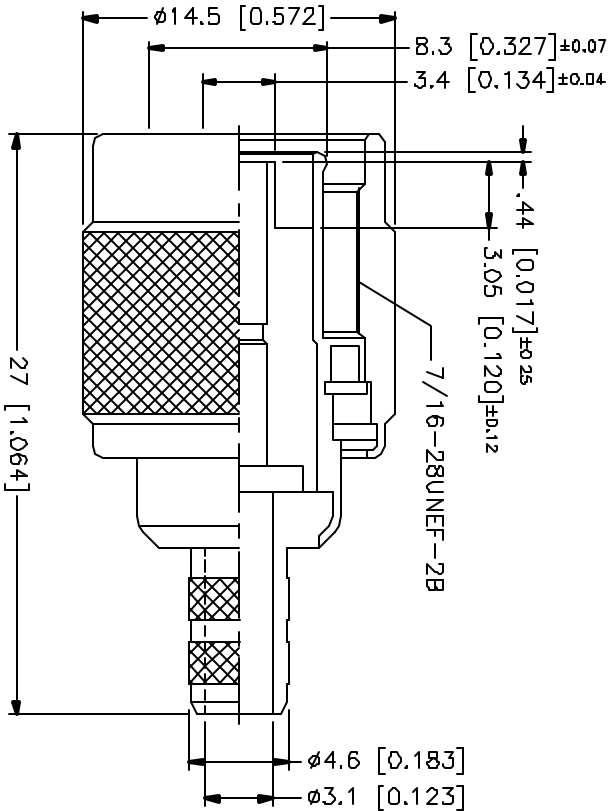
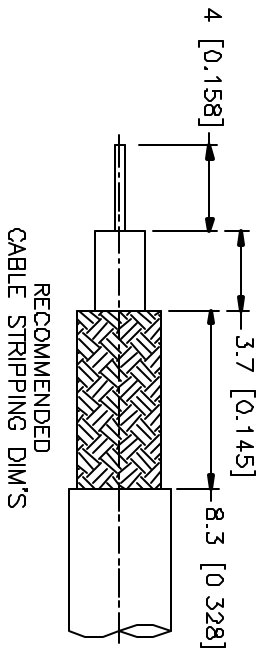



REV.	DATE	DESCRIPTION
A	12/16/01	MODIFY CONTACT PIN DIMENSION



DESCRIPTION	MATERIAL	FINISH	UNLESS OTHERWISE SPECIFIED DIMENSIONS ARE IN MILLIMETERS DIMENSIONS IN [] ARE IN INCHES FOR CUSTOMER REFERENCE ONLY		APPROVALS	DATE	<div> TNC STRAIGHT CRIMP PLUG (LMR200 CABLE) REVERSE POLARIZED</div>					REV	
1 BODY	BRASS	NICKEL	DRAWN	G.R.S.	12/16/01	A							
2 INSULATOR	TEFLON	NATURAL	CHECKED										
3 GASKET	RUBBER	RED	ISSUED										
4 RETAINING RING	PHOS. BRONZE	GOLD											
5 WASHER	BRASS	NICKEL	UNLESS OTHERWISE SPECIFIED TOLERANCES FOR MILLIMETERS ARE: 0.3-6 = ± 0.2 6-50 = ± 0.4 30-120 = ± 0.6 120-315 = ± 1 315-1000 = ± 1.6 1000-2000 = ± 2.4			SIZE		FSQM NO.	DWG. NO				
6 CONTACT PIN	PHOS. BRONZE	GOLD				A		99001	122410RP-10.DWG		A		
7 FERRULE	COPPER	NICKEL	DO NOT SCALE DRAWING					SCALE	NA	PART NO.	122410RP-10	SHEET	1 OF 1