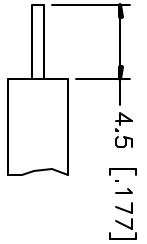
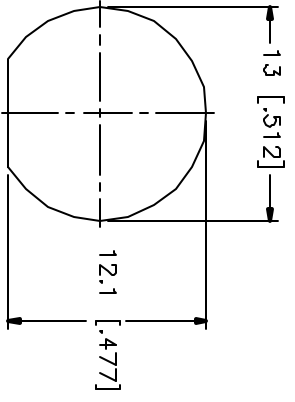
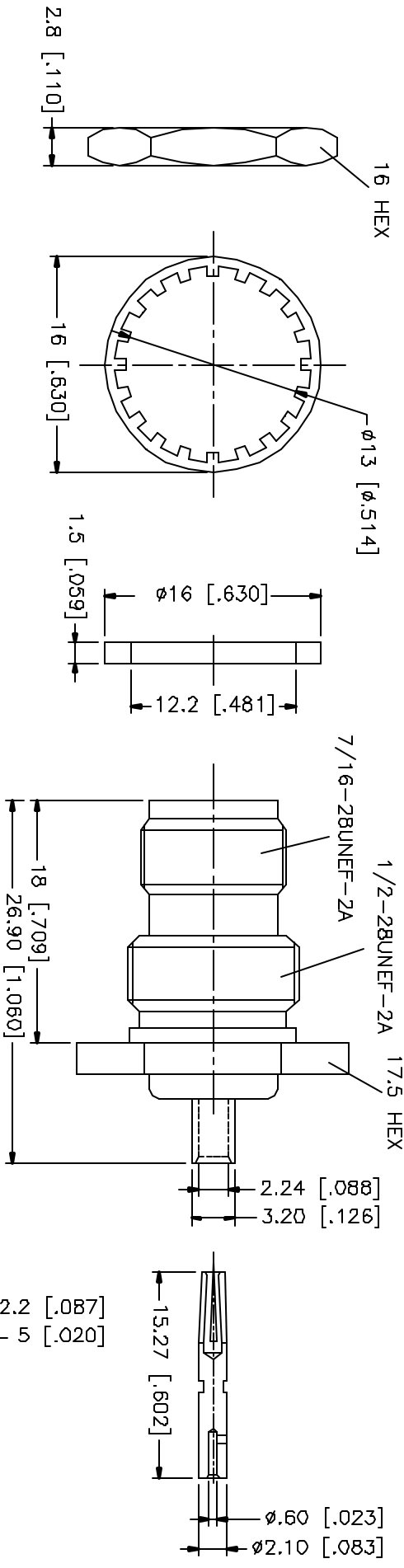



REV.	DATE	DESCRIPTION
NC	05/10/01	INITIAL RELEASE



RECOMMENDED
MOUNTING HOLE

RECOMMENDED
CABLE STRIPPING DIM'S

- NOTES:
- CONTACT PIN TO SOLDER
 - MAX. PANEL THICKNESS = 3.5mm

DESCRIPTION	MATERIAL	FINISH	UNLESS OTHERWISE SPECIFIED DIMENSIONS ARE IN MILLIMETERS DIMENSIONS IN [] ARE IN INCHES FOR CUSTOMER REFERENCE ONLY		APPROVALS		DATE	<div> Connector Corporation</div> <div>TNC BULKHEAD DIRECT SOLDER JACK (FOR .085", .086" SEMI-RIGID CABLE)</div>								
			DRAWN	G.R.S.	05/10/01	DRAWN							G.R.S.			
1	BODY	BRASS	NICKEL													
2	INSULATOR	TEFLON	NATURAL													
3	BARREL	BRASS	GOLD													
4	CONTACT PIN	PHOS. BRONZE	GOLD													
5	HEX NUT	BRASS	NICKEL													
6	LOCK WASHER	BRASS	NICKEL													
7																
8																

UNLESS OTHERWISE SPECIFIED TOLERANCES FOR MILLIMETERS ARE: 0.5-6 = ± 0.2 6-30 = ± 0.4 30-120 = ± 0.6 120-315 = ± 1 315-1000 = ± 1.6 1 000-2 000 = ± 2.4			
DO NOT SCALE DRAWING			

TITLE		TNC BULKHEAD DIRECT SOLDER JACK (FOR .085", .086" SEMI-RIGID CABLE)	
SIZE	FGCN NO	DWG NO.	REV.
A	99001	122400-75.DWG	NC
SCALE	NA	PART NO	122400-75
		SHEET	1 OF 1

UNLESS OTHERWISE SPECIFIED
DIMENSIONS ARE IN MILLIMETERS
DIMENSIONS IN [] ARE IN INCHES
FOR CUSTOMER REFERENCE ONLY

UNLESS OTHERWISE SPECIFIED
TOLERANCES FOR MILLIMETERS ARE:

0.5-6 = ± 0.2
6-30 = ± 0.4
30-120 = ± 0.6
120-315 = ± 1
315-1000 = ± 1.6
1000-2000 = ± 2.4

DO NOT SCALE DRAWING