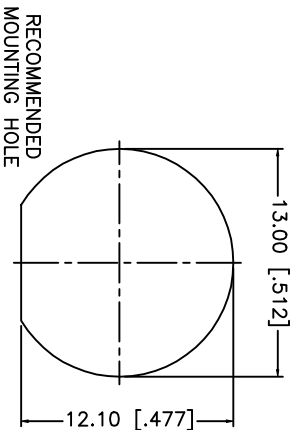
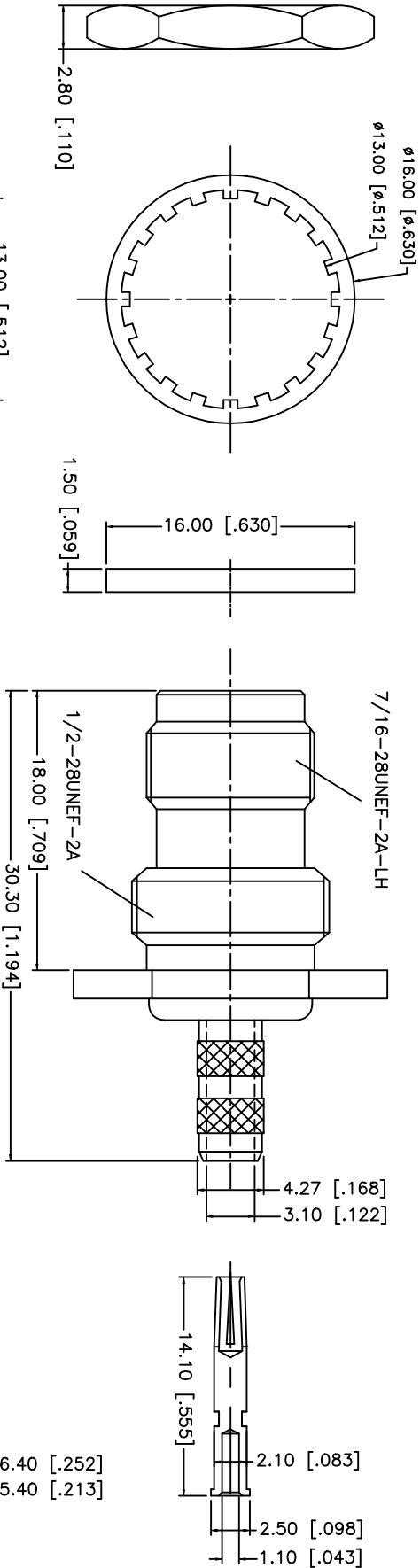
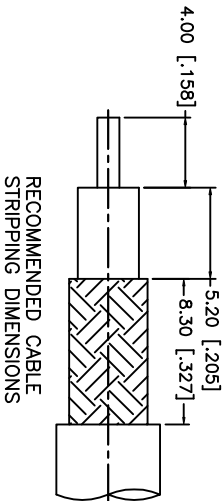


REV.	DATE	DESCRIPTION
NC	05/18/02	INITIAL RELEASE



9	FERRULE	COPPER	NICKEL	UNLESS OTHERWISE SPECIFIED DIMENSIONS ARE IN MILLIMETERS  DIMENSIONS IN [ ] ARE IN INCHES FOR CUSTOMER REFERENCE ONLY			
8	CONTACT PIN	PHOS. BRONZE	GOLD				
7	HEX NUT	BRASS	NICKEL				
6	LOCKWASHER	BRASS	NICKEL				
5	GASKET	RUBBER	NICKEL				
4	BARREL	BRASS	NICKEL	UNLESS OTHERWISE SPECIFIED TOLERANCES FOR INCHES ARE: .XXX = ± 0.005" .XX = ± 0.010" .X = ± 0.020"			
3	INSULATOR	TEFLON	NATURAL				
2	BODY	BRASS	NICKEL				
1	HOUSING	BRASS	NICKEL	DO NOT SCALE DRAWING			
DESCRIPTION		MATERIAL					
				APPROVALS		DATE	
				DRAWN G.R.S.		05/18/02	
				CHECKED			
				ISSUED			
TITLE							
TNC BULKHEAD CRIMP JACK REVERSE THREAD (FOR RG-58/U, 58C/U CABLE)							
Amphenol - Connex CONNECTOR CORPORATION							
SIZE		FSCM NO.		DWG. NO.		REV.	
A		99001		122160RT.DWG		NC	
SCALE		NA		PART NO.		122160RT	
				SHEET		1 OF 1	

Amphenol - Connex

CONNECTOR CORPORATION

TNC BULKHEAD CRIMP JACK  
REVERSE THREAD (FOR RG-58/U, 58C/U CABLE)

TITLE	SIZE	FSQM NO.	DWG. NO.	REV.
A	99001	122160RT.DWG	NC	

SCALE	PART NO.	SHEET
NA	122160RT	1 OF 1