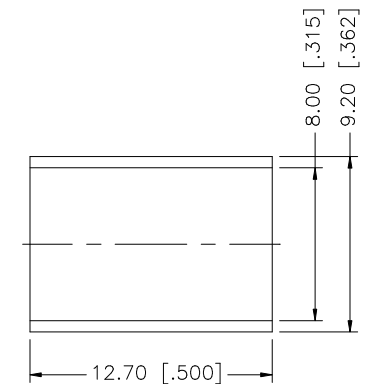
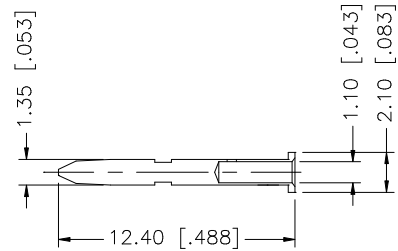
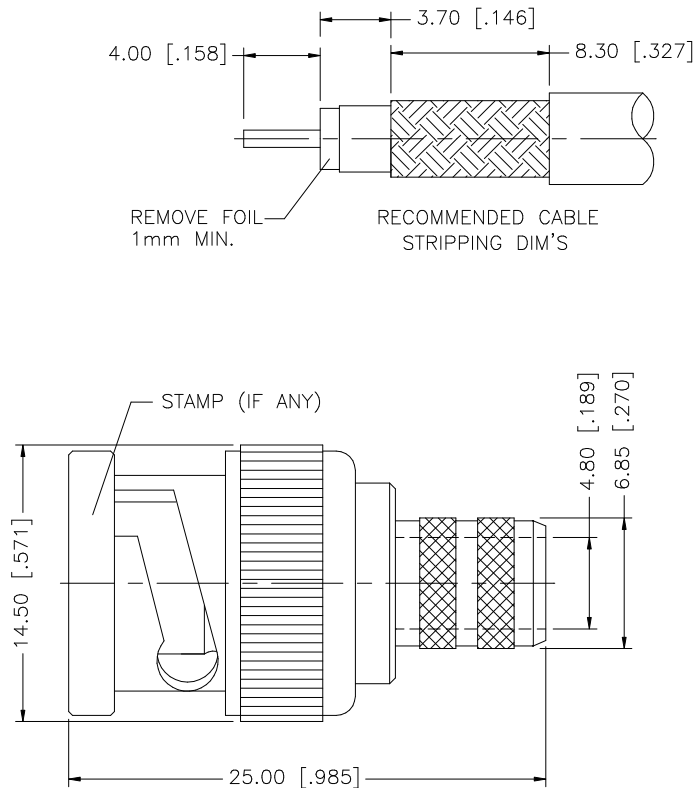


REV.	DATE	DESCRIPTION
A	02/24/04	UPDATE PART DESCRIPTION



NOTE:

1. CRIMPED FERRULE
HEX CRIMP SIZE .324"
2. CRIMPED CONTACT PIN
HEX CRIMP SIZE .043"

					<div>UNLESS OTHERWISE SPECIFIED DIMENSIONS ARE IN MILLIMETERS. DIMENSIONS IN [] ARE IN INCHES AND FOR CUSTOMER REFERENCE ONLY.</div> <div>UNLESS OTHERWISE SPECIFIED TOLERANCES FOR MILLIMETERS ARE: 0.5 – 8mm ± 0.20mm 8 – 30mm ± 0.40mm 30 – 120mm ± 0.50mm</div> <div>UNLESS OTHERWISE SPECIFIED TOLERANCES FOR INCHES ARE: .020 – .315 = ± 0.007" .315 – 1.180 = ± 0.015" 1.180 – 4.724 = ± 0.020"</div> <div>DO NOT SCALE DRAWING</div>	APPROVALS		DATE		<div>Amphenol Connex</div>								
8						DRAWN	G.R.S.	02/24/04										
7						CHECKED												
6						ISSUED				PART DESCRIPTION <div>BNC CRIMP PLUG (FOR BELDEN 5339Q5 RG-6 TYPE CABLE)</div>								
5						SHEET	1 OF 1											
4	FERRULE	COPPER	NICKEL	1						PART NO. <div>112987</div>								
3	INSULATOR	TEFLON	NATURAL	1														
2	CONTACT PIN	BRASS	GOLD	1														
1	BODY	BRASS	NICKEL	1					DWG. NO.		112987.DWG		REV.	A	SIZE	A	SCALE	NA
	DESCRIPTION	MATERIAL	FINISH	QTY			CAD FILE C:/112/112987.DWG											