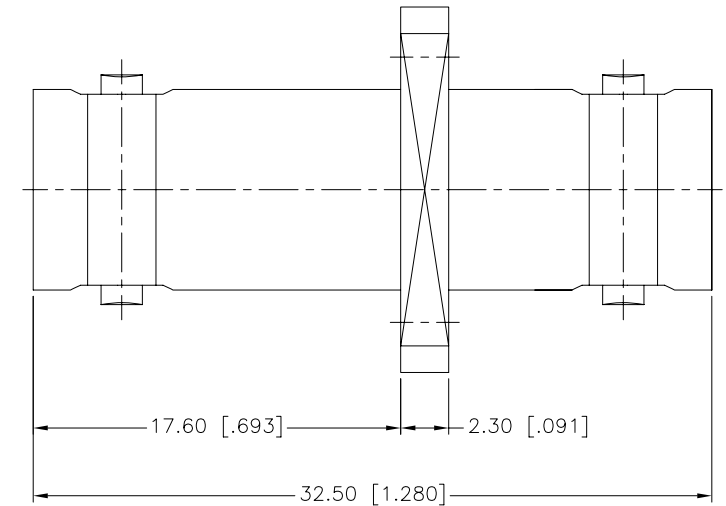
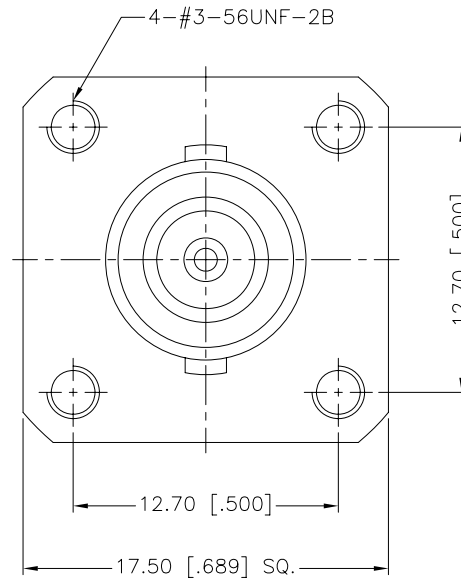
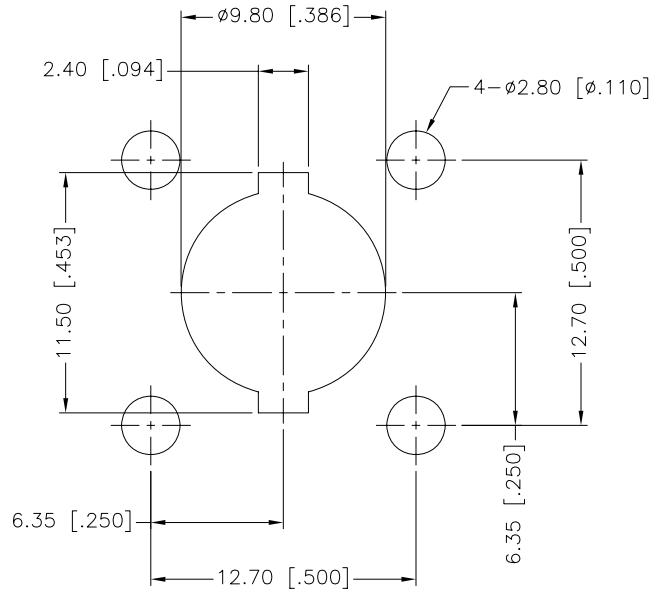


REV.	DATE	ECR NO.	DESCRIPTION
NC	09/12/02	XXXXXX	INITIAL RELEASE
A	06/12/12	2334	UPDATE DRAWING FORMAT



RECOMMENDED
MOUNTING HOLE

1. IMPEDANCE: 50 OHM
2. FREQUENCY RANGE: DC 0-4 GHz
3. DIELECTRIC WITHSTANDING VOLTAGE: 1500 VRMS, MIN.
4. MAX. PANEL THICKNESS=6.4mm

QTY	DESCRIPTION	MATERIAL	FINISH
4	RING	BRASS	NICKEL
3	CONTACT PIN	PHOSPHOR BRONZE	GOLD
2	INSULATOR	PTFE	NATURAL
1	HOUSING	BRASS	NICKEL

<small>UNLESS OTHERWISE SPECIFIED DIMENSIONS ARE IN MILLIMETERS. DIMENSIONS IN [] ARE IN INCHES AND FOR CUSTOMER REFERENCE ONLY.</small> <small>UNLESS OTHERWISE SPECIFIED TOLERANCES FOR MILLIMETERS ARE:</small> 0.5 - 8mm ± 0.20mm 8 - 30mm ± 0.40mm 30 - 120mm ± 0.50mm <small>UNLESS OTHERWISE SPECIFIED TOLERANCES FOR INCHES ARE:</small> .020 - .315 = ± 0.007" .315 - 1.180 = ± 0.015" 1.180 - 4.724 = ± 0.020" DO NOT SCALE DRAWING	APPROVALS	DATE	
	DRAWN	M.ZHANG	06/12/12
	CHECKED		
	ISSUED		
	SHEET	1 OF 1	
CAD FILE	C:/CONNEX/112712-10.DWG		

<h1>Amphenol Connex</h1>			
PART DESCRIPTION			
BNC FEMALE TO FEMALE PANEL ADAPTOR (WITH #3-56UNF TAPPED HOLES)			
PART NO.			
112712-10			
DWG. NO.	112712-10.DWG	REV.	A
SIZE	A	SCALE	NA