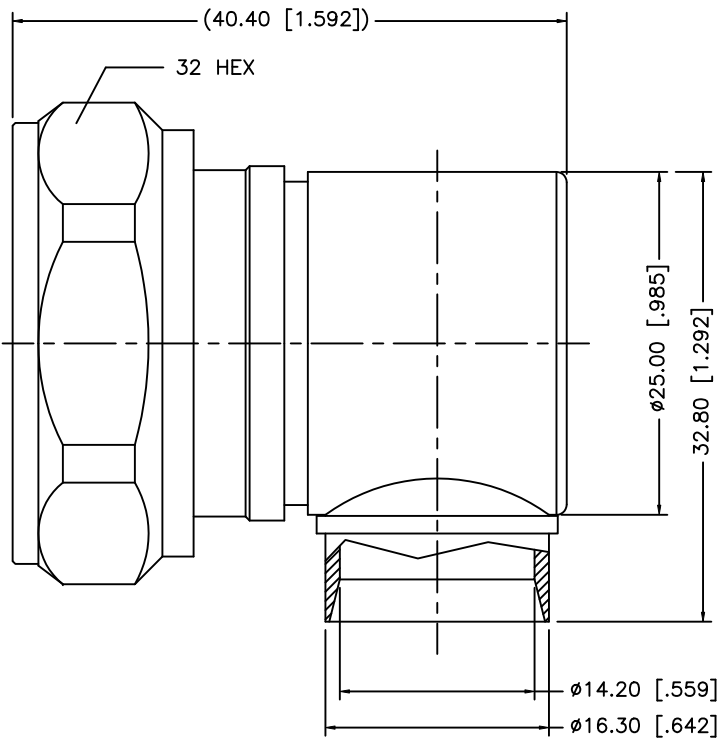


REV.	DATE	ECR NO.	DESCRIPTION
NC	01/13/09	—	INITIAL RELEASE



8				<div>UNLESS OTHERWISE SPECIFIED DIMENSIONS ARE IN MILLIMETERS. DIMENSIONS IN [] ARE IN INCHES AND FOR CUSTOMER REFERENCE ONLY.</div> <div>UNLESS OTHERWISE SPECIFIED TOLERANCES FOR MILLIMETERS ARE: 0.5 – 8mm ± 0.20mm 8 – 30mm ± 0.40mm 30 – 120mm ± 0.50mm</div> <div>UNLESS OTHERWISE SPECIFIED TOLERANCES FOR INCHES ARE: .020 – .315 = ± 0.007" .315 – 1.180 = ± 0.015" 1.180 – 4.724 = ± 0.020"</div> <div>DO NOT SCALE DRAWING</div>	APPROVALS		DATE		<div>Amphenol Connex</div>									
7					DRAWN	GRS	01/13/09											
6					CHECKED													
5					ISSUED			PART DESCRIPTION										
4	GASKET	SILICONE	RED		1	SHEET 1 OF 1				7/16 RIGHT ANGLE SOLDER PLUG FOR 1/2 ANNULAR (LDF) CABLE, OVERMOLDABLE								
3	CONTACT PIN	BRASS	SILVER		1													
2	INSULATOR	PTFE	NATURAL		1					PART NO.								
1	BODY	BRASS	NICKEL		1					272FPRA4-10								
	DESCRIPTION	MATERIAL	FINISH		QTY	CAD FILE		C:/272/272FPRA4-10.DWG		DWG. NO.	272FPRA4-10.DWG		REV.	NC	SIZE	A	SCALE	NA