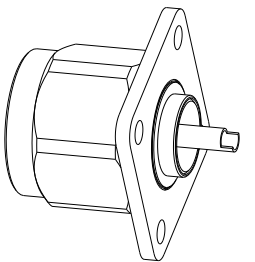


NOTES :

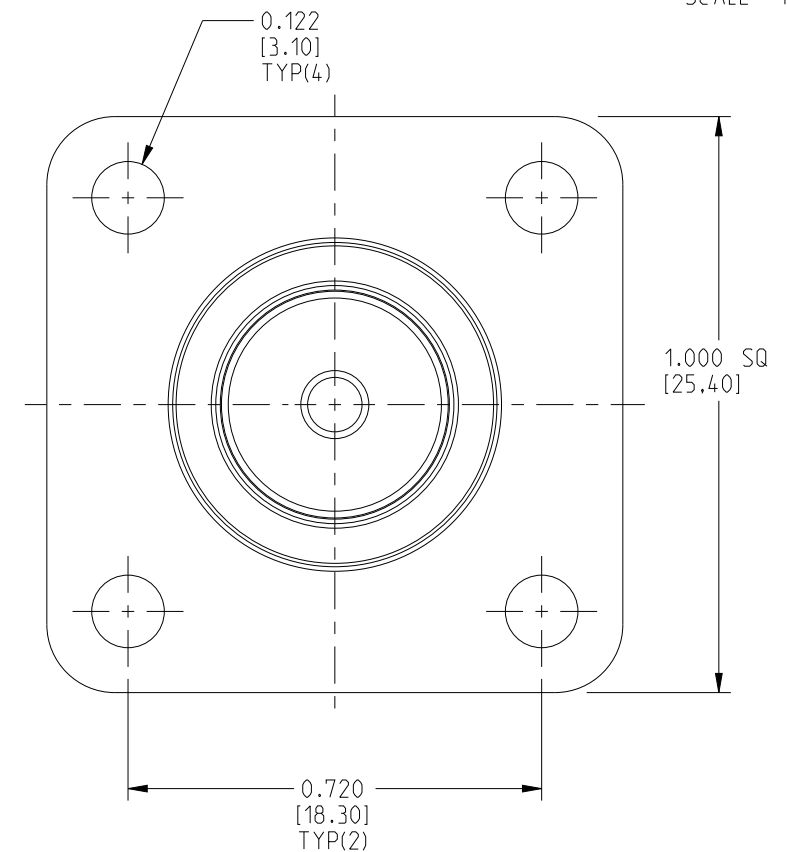
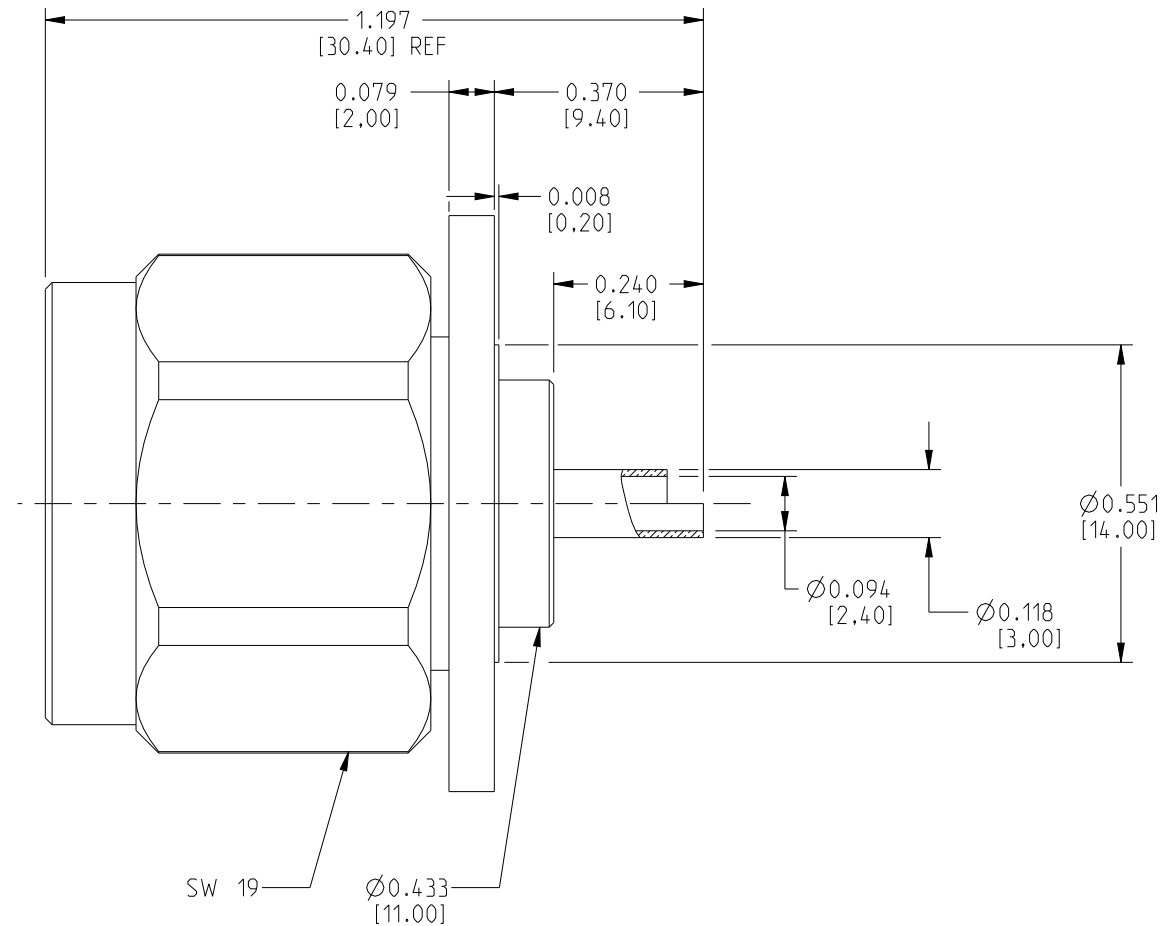
THE CONNECTOR INTERFACE MEETS MIL-STD-348

WORKING TEMPERATURE RANGE	: -65°C TO 165°C
CHARACTERISTIC IMPEDANCE	: 50Ω
WORKING VOLTAGE	: 1000V
FREQUENCY RANGE	: 0-11 GHz
DIELECTRIC WITHSTANDING VOLTAGE	: 1500V
CONTACT RESISTANCE : CENTER CONTACT	: ≤1 mΩ
OUTER CONTACT	: ≤0.2 mΩ
INSULATION RESISTANCE	: ≥5000 MΩ
VSWR	: ≤1.3(0-2GHz)
CENTER CONTACT RETENTION FORCE	: ≥26.7 N

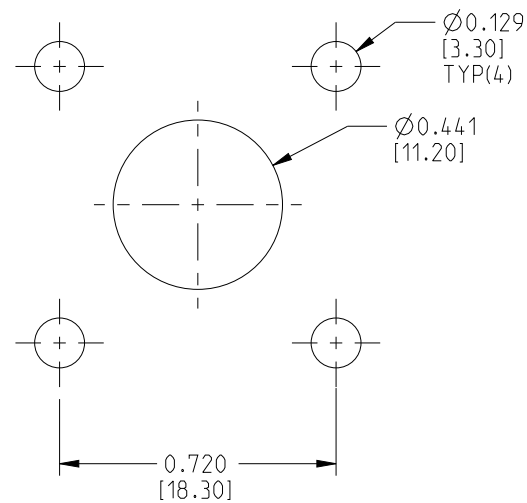
172118-12		REVISIONS			
DRAWING NO.	REV	DESCRIPTION	DATE	ECO	APPR
THIRD ANGLE PROJ. 	A	RELEASE TO MFG.	12-Mar-10	2135	CL
	B	DIMENSIONS & NOTE ARE UPDATED	13-Apr-12	2302	MG



SCALE 1.000



## MOUNTING HOLE DIMENSION



4	RUBBER SEAL	SILICON RUBBER		1
3	INSULATOR	PTFE		1
2	BODY & NUT	BRASS	WHITE BRONZE	1
1	CENTER CONTACT	BRASS	GOLD	1
NO	DESCRIPTION	MATERIAL	FINISH	QTY

UNLESS OTHERWISE SPECIFIED, DIMENSIONS ARE IN INCHES AND TOLERANCES ARE: 2 PLACE DECIMAL      3 PLACE DECIMAL      ANGLES ±.015 (0,381 mm)      ±.005 (0,127 mm)      ± 1°	MATERIAL  SEE TABLE	DRAWN GOPI M	DATE 13-Apr-12	TITLE N DIRECT SOLDER PLUG WITH SOLDER CUP, 4-HOLE FLANGE		Amphenol Connex	
NOTICE - These drawings, specifications, or other data (1) are, and remain the property of Amphenol Corp. (2) must be returned upon request; and (3) are confidential and not to be disclosed to any person other than those to whom they are given by Amphenol Corp. The furnishing of these drawings, specifications, or other data by Amphenol Corp., or to any other person to anyone for any purpose is not to be regarded by implication or otherwise in any manner licensing, granting rights or permitting such holder or any other person to manufacture, use or sell any product, process or design, patented or otherwise, that may in any way be related to or disclosed by said drawings, specifications, or other data.	REFERENCE  TASK - 900	ENGINEER GOPI M	DATE 13-Apr-12				
		APPROVED	DATE				
		CAD FILE	DWG SIZE B	DRAWING NO. 172118-12	REV B		
				SCALE: 3.0:1	SHEET	1 OF 1	