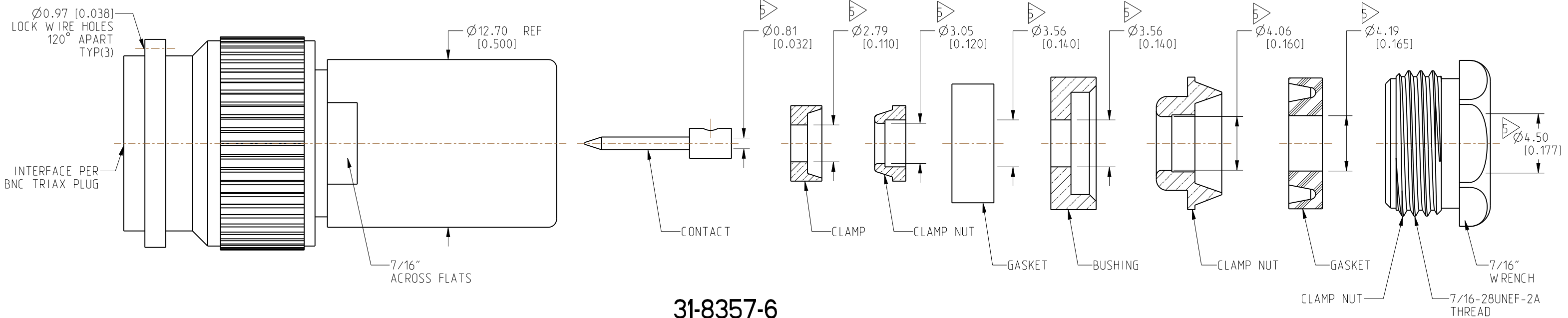


1. MATERIALS AND FINISHES:  
BODY, COUPLING NUT & CLAMP NUT - BRASS, NICKEL PLATING  
BUSHING, CLAMP NUTS, BRAID CLAMP, CLAMPS &  
BODY & COUPLING NUT - BRASS, SILVER PLATING  
CONTACT & OUTER CONTACTS - BRASS, GOLD PLATING  
INSULATORS - PTFE, NATURAL  
GASKETS - SILICONE RUBBER, RED  
RETAINING RING - BeCu, NATURAL

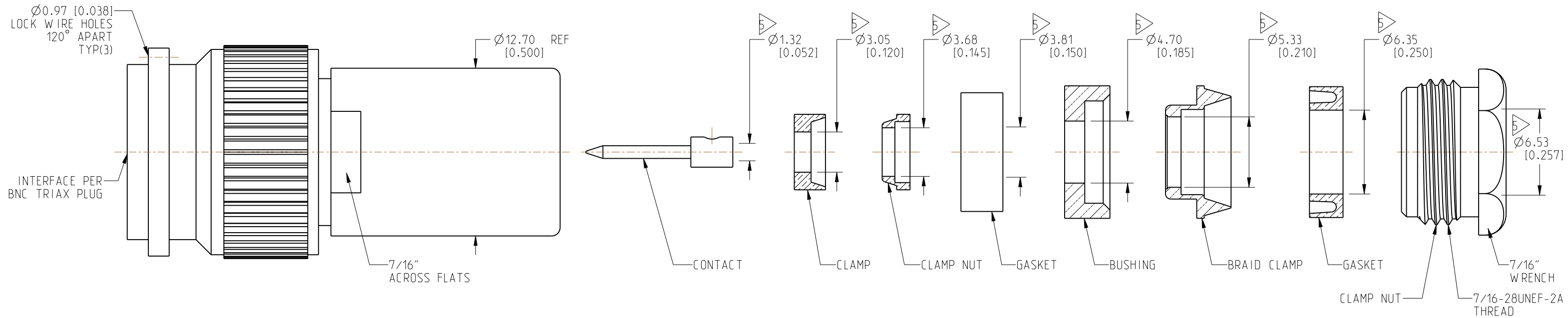
3. PACKAGING:  
A. QUANTITY: SINGLE PACK  
B. MARKING: PACKAGING TO BE MARKED  
"AMPHENOL RF, 31-8357-X AND DATE CODE"

5. SHOWS CABLE ENTRY DIMENSIONS.

31-8357-3




31-8357-6



## CUSTOMER OUTLINE DRAWING

**ALL OTHER SHEETS ARE FOR INTERNAL USE ONLY**

NOTICE: These drawings, specifications, or other data (1) are, and remain the property of Amphenol corp. (2) must be returned upon request; and (3) are confidential and not to be disclosed to any person other than those to whom they are given by Amphenol Corp. The furnishing of these drawings, specifications, or other data by Amphenol Corp., or to any other person to anyone for any purpose is not to be regarded by implication or otherwise in any manner licensing, granting rights to permitting such holder or any other person to manufacture, use or sell any product, process or design, patented or otherwise, that may in any way be related to or disclosed by said drawings, specifications, or other data.			UNLESS OTHERWISE SPECIFIED DIMENSIONS ARE METRIC (INCHES) AND TOLERANCES ARE: $<0.5\text{mm} = \pm 0.05\text{mm}$ $<0.020 = \pm 0.002$ $>0.5 - 6\text{mm} = \pm 0.1\text{mm}$ $>0.020 - 0.236 = \pm 0.004$ $>6.00 - 30\text{mm} = \pm 0.2\text{mm}$ $>0.236 - 1.181 = \pm 0.008$ $>30.00 - 120\text{mm} = \pm 0.3\text{mm}$ $>1.181 - 4.725 = \pm 0.012$		MATERIAL  SEE NOTES		TITLE BNC STR TRIAX PLUG FOR TRIAX CABLE CLAMP TYPE		<b>Amphenol RF</b>		
									SIZE  B	DRAWING NO. 31-8357-X	REV  AL
										ITEM NO. 31-8357-X	
THIRD ANGLE PROJ. 			REFERENCE	EAR#	ANGLES = $\pm 1^\circ$		ENGINEER O.BARTHELMES	DATE 14-MAY-20	SHEET NO. 3 OF 3	SCALE: 8.0:1.0	