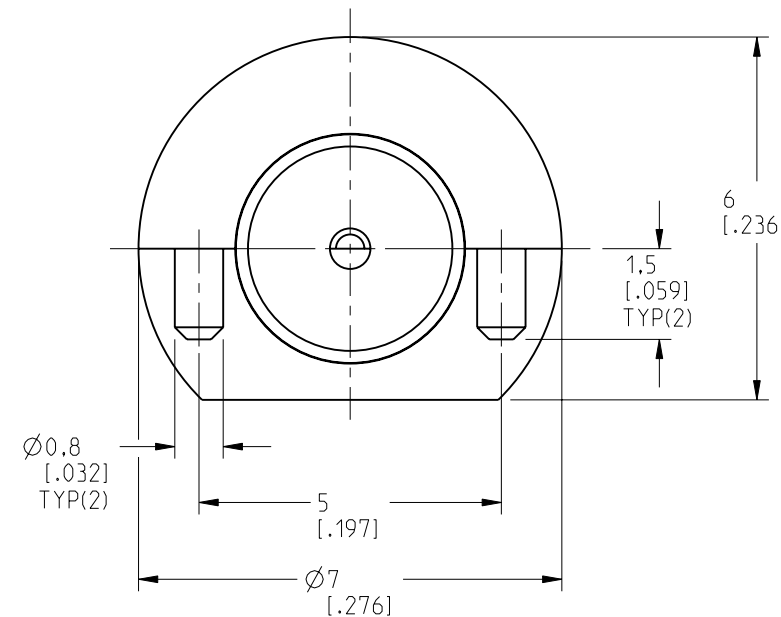
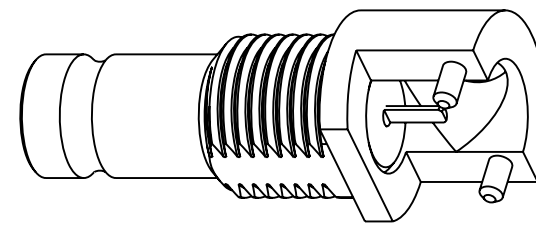
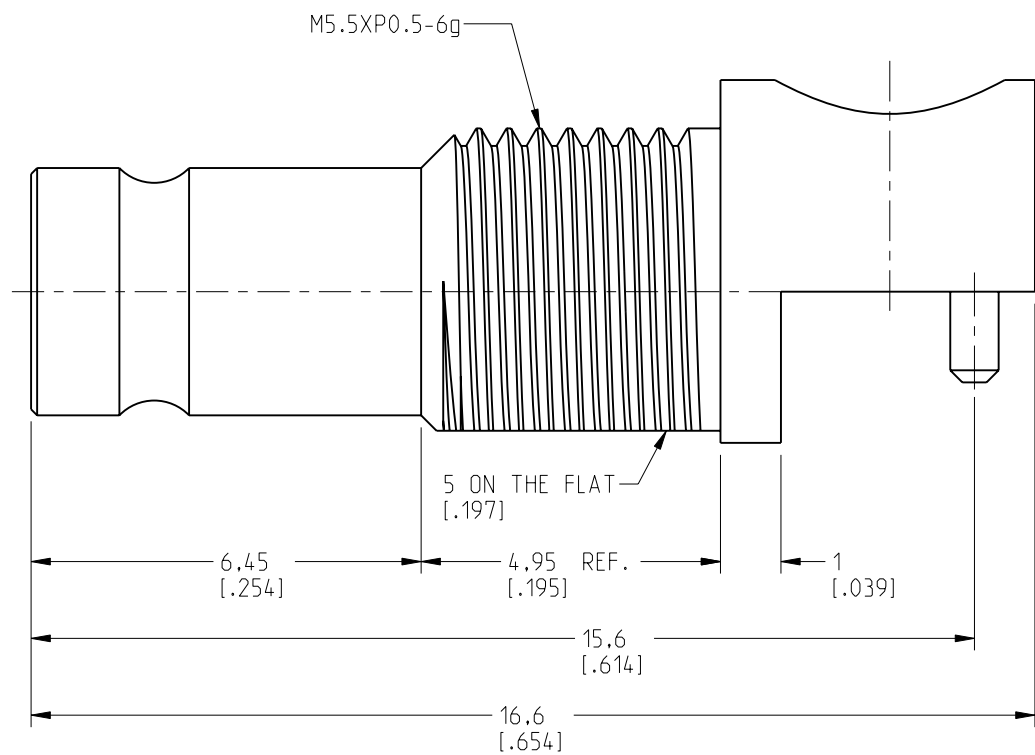
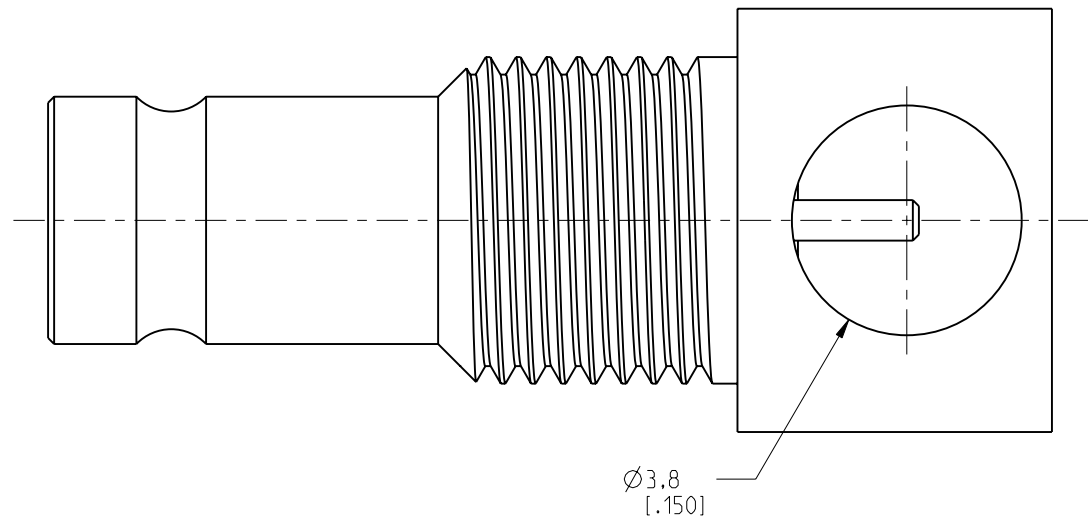
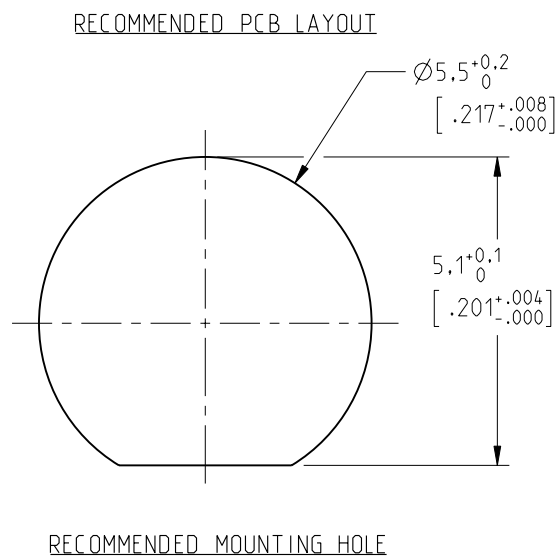
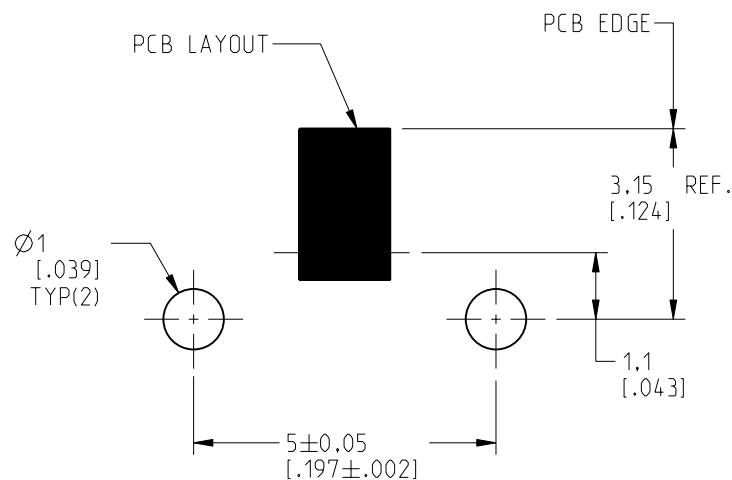


1. MATERIALS AND FINISHES:
 - BODY - BRASS, GOLD PLATING
 - CONTACT - BeCu, GOLD PLATING
 - INSULATOR - PTFE, NATURAL
2. ELECTRICAL:
 - A. IMPEDANCE: 75 OHM
 - B. FREQUENCY RANGE: DC - 3 GHz
 - C. VSWR (RETURN LOSS): 1.15 MAX.
 - D. DIELECTRIC WITHSTANDING VOLTAGE: 750 VRMS, MIN.
3. MECHANICAL:
 - A. DURABILITY: 500 CYCLES MIN.
 - B. TEMPERATURE RANGE: -40°C TO +155°C
4. MAX. PANEL THICKNESS = 1.2 MM



CUSTOMER OUTLINE DRAWING

ALL OTHER SHEETS ARE FOR INTERNAL USE ONLY

REVISIONS				
REV	DESCRIPTION	DATE	ECN	BY
NC	INITIAL RELEASE	02/12/07	-----	GRS
B	REMOVED SPANNER NUT & LOCK WASHER, UPDATED RECOMMENDED PCB LAYOUT	23-Jun-21	15776	JS
C	SYNC, REDRAWN & UPDATE DRAWING FORMAT	16-Jul-21	15829	SH

NOTICE: These drawings, specifications, or other data (1) are, and remain the property of Amphenol corp (2) must be returned upon request; and (3) are confidential and not to be disclosed to any person other than those to whom they are given by Amphenol Corp. The furnishing of these drawings, specifications, or other data by Amphenol Corp., or to any other person to anyone for any purpose is not to be regarded by implication or otherwise in any manner licensing, granting rights to permitting such holder or any other person to manufacture, use or sell any product, process or design, patented or otherwise, that may in any way be related to or disclosed by said drawings, specifications, or other data.

UNLESS OTHERWISE SPECIFIED
DIMENSIONS ARE METRIC (INCHES) AND TOLERANCES ARE:

<0.5mm = ±0.05mm	[<0.020 = ±0.002]
>0.5 - 6mm = ±0.1mm	[>0.020 - 0.236 = ±0.004]
>6.00 - 30mm = ±0.2mm	[>0.236 - 1.181 = ±0.008]
>30.00 - 120mm = ±0.3mm	[>1.181 - 4.725 = ±0.012]

ENGR.1
M.ZHANG

ENGR.2

DATE
15-Jul-21

TITLE
1.0/2.3 RECEPTACLE PC MOUNT BULKHAND EDGE CARD

SHEET NO. 2 OF 2

SCALE: 8.0:1.0

Amphenol RF

SIZE B	DRAWING NO.	1236251L4-001-3GT30G-75
	ITEM NO.	106251AARA1GE7F
	PART NO.	282123-75

REV

