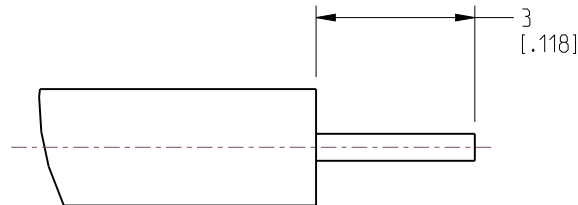


1. MATERIALS AND FINISHES:  
BODY - BRASS, GOLD PLATING  
SHELL - STAINLESS STEEL, PASSIVATED  
CONTACT - BRASS, GOLD PLATING  
INSULATOR - PTFE, NATURAL

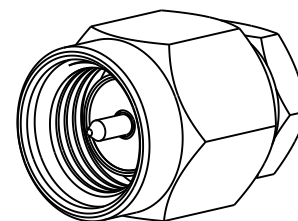
2. ELECTRICAL:  
A. IMPEDANCE: 50 OHM  
B. FREQUENCY RANGE: DC - 18 GHz  
C. VSWR (RETURN LOSS): 1.30 MAX.  
D. DIELECTRIC WITHSTANDING VOLTAGE: 750 VRMS, MIN.

3. MECHANICAL:  
A. DURABILITY: 500 CYCLES MIN.  
B. TEMPERATURE RANGE: -65°C TO +165°C

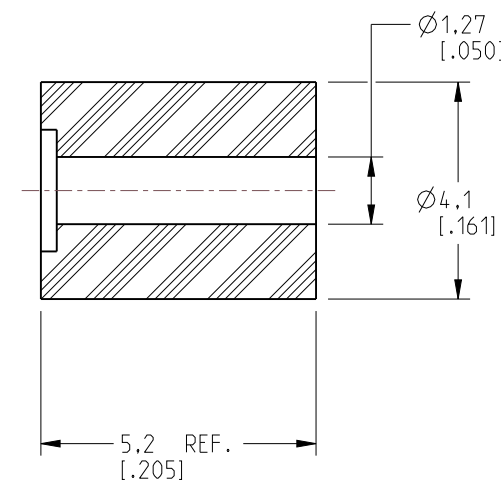
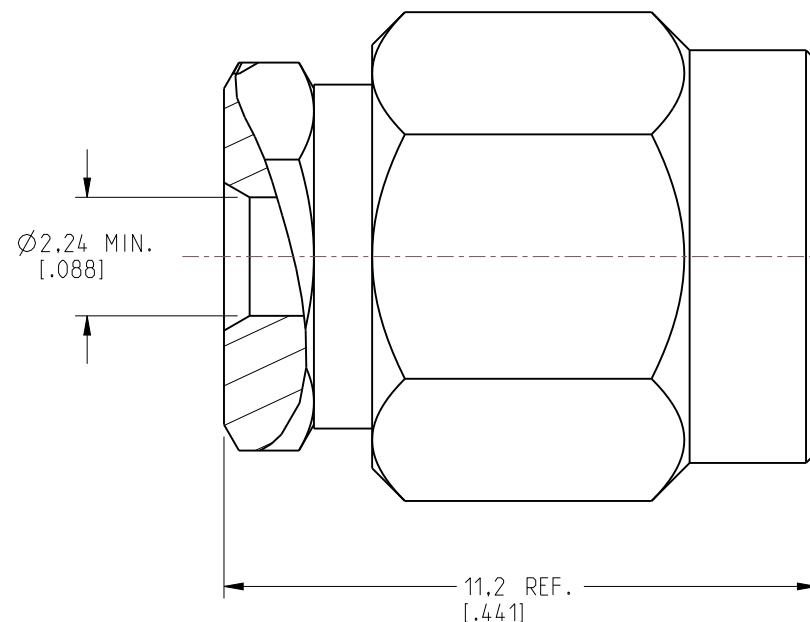
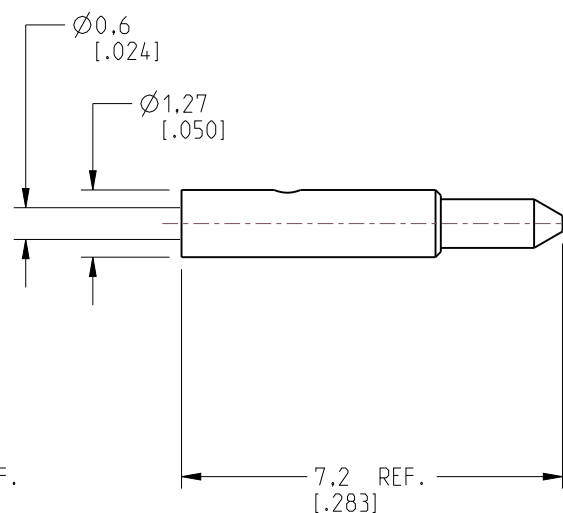
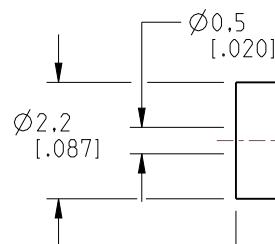
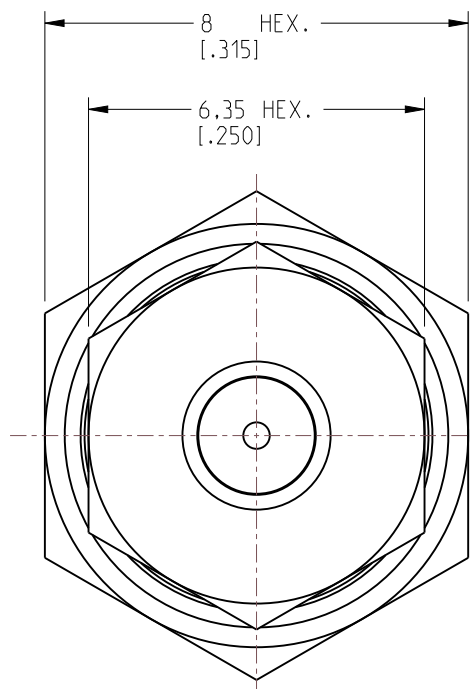
#### 4. CONTACT PIN TO SOLDER



### RECOMMENDED CABLE STRIPPING DIM'S



REVISIONS				
REV	DESCRIPTION	DATE	ECN	BY
NC	INITIAL RELEASE	--	-----	--
A	UPDATE DRAWING FORMAT	01/25/04	-----	GRS
B	MODIFY PART DESCRIPTION TO "COUPLING NUT"	12/31/05	-----	GRS
D	SYNC, ADD THE LEFT VIEW	18-Nov-22		SH



ALL OTHER SHEETS ARE FOR INTERNAL USE ONLY

NOTICE: These drawings, specifications, or other data (1) are, and remain the property of Amphenol corp (2) must be returned upon request; and (3) are confidential and not to be disclosed to any person other than those to whom they are given by Amphenol Corp. The furnishing of these drawings, specifications, or other data by Amphenol Corp., or to any other person to anyone for any purpose is not to be regarded by implication or otherwise in any manner licensing, granting rights to permitting such holder or any other person to manufacture, use or sell any product, process or design, patented or otherwise, that may in any way be related to or disclosed by said drawings, specifications, or other data.

UNLESS OTHERWISE SPECIFIED  
DIMENSIONS ARE METRIC (INCHES) AND TOLERANCES ARE:

<0.5mm = ±0.05mm	[<0.020 = ±0.002]
0.5 - 6mm = ±0.1mm	[0.020 - 0.236 = ±0.004]
>6.00 - 30mm = ±0.2mm	[>0.236 - 1.181 = ±0.008]
>30.00 - 120mm = ±0.3mm	[>1.181 - 4.725 = ±0.012]

MATERIAL
----------

SEE NOTES

TITLE
-------

SMA DIRECT SOLDER PLUG  
(FOR .085" .086" CABLE)

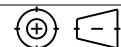
SIZE

DRAWING NO.	5MA1181A7	364STEOG	08E EO
-------------	-----------	----------	--------

ITEM NO. 111181AAP45HF5F

REV

THIRD ANGLE PROJ.



## REFERENCE

EAR#
------

-----  
 ANGLES =  $\pm 1^\circ$

ENGR.1  
G.W ANG

ENGR.2  
M.ZHANG

DATE	17-Nov-22
------	-----------

SHEET NO. 2 OF 2

SCALE: 7.0:1.0

B

PART NO. 132188

