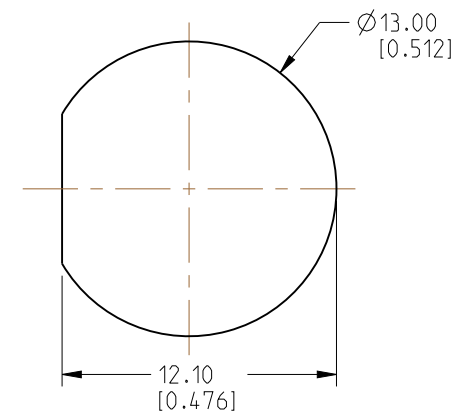
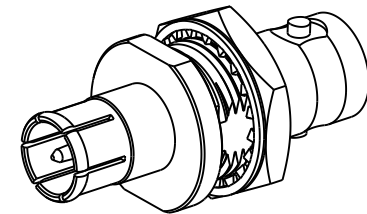


1. MATERIALS AND FINISHES:
  - BODY, LOCK RING, LOCK WASHER & HEX-NUT - BRASS, NICKEL PLATING
  - INSULATOR - PTFE, NATURAL
  - CONTACT - PHOSPHOR BRONZE, GOLD PLATING
2. ELECTRICAL:
  - A. IMPEDANCE: 75 OHM
  - B. FREQUENCY RANGE: DC-12 GHz
  - C. RETURN LOSS: -20 dB MIN. @ DC-6 GHz  
-15 dB MIN. @ 6-12 GHz
  - D. DIELECTRIC WITHSTANDING VOLTAGE: 1500
3. MECHANICAL:
  - A. DURABILITY: 500 CYCLES MIN.
  - B. TEMPERATURE RANGE: -65°C TO +165°C

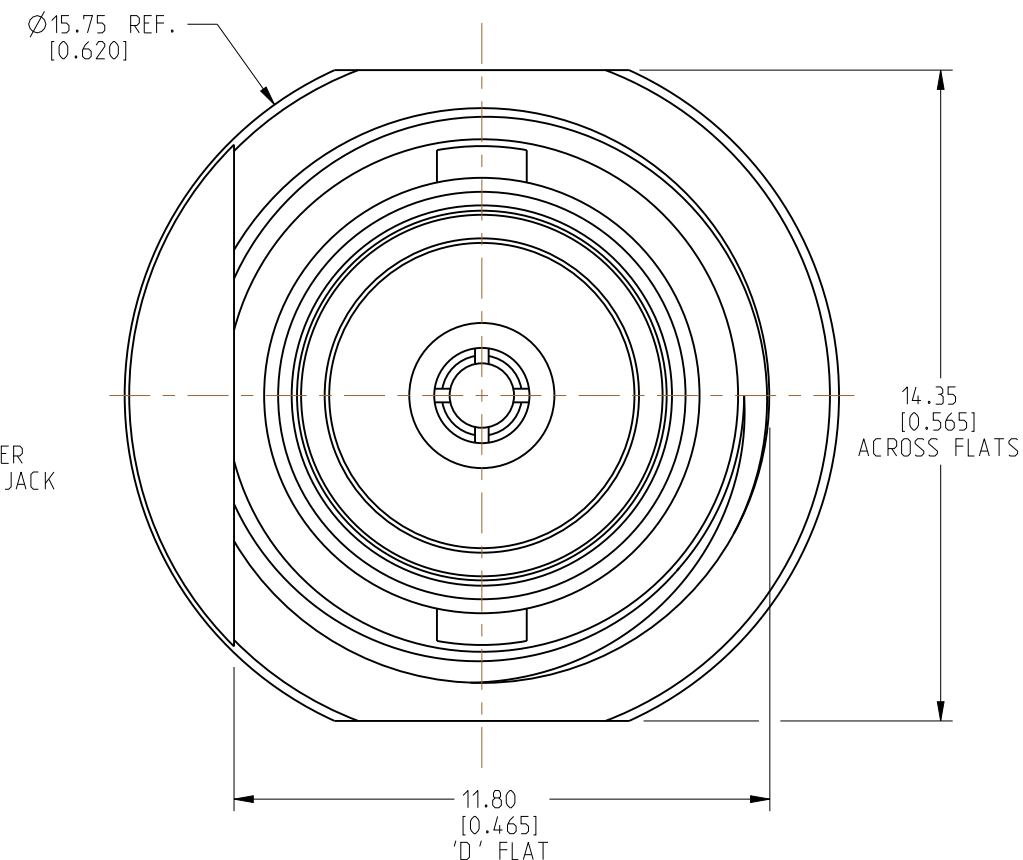
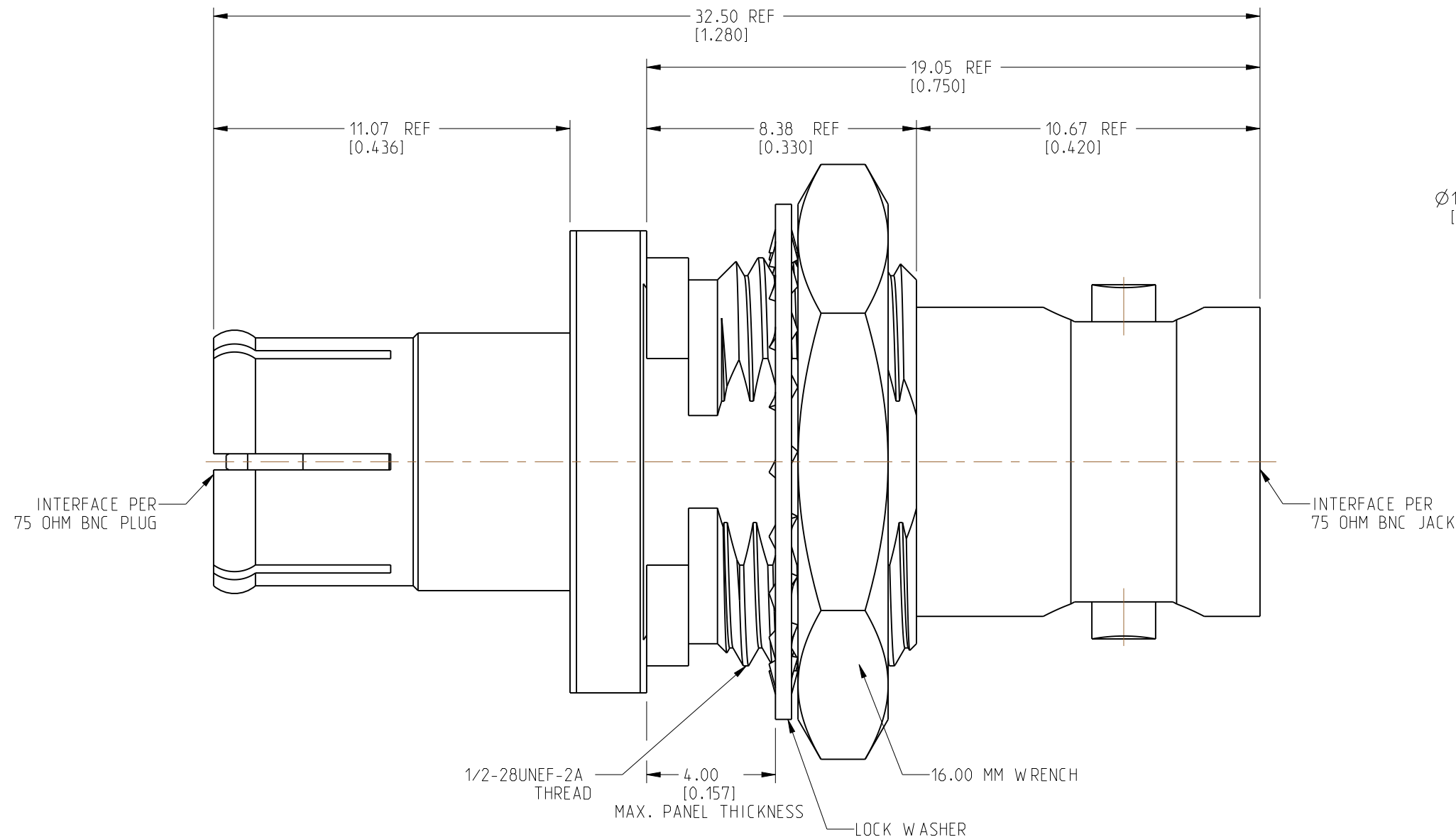
4. PACKAGING:  
A. QUANTITY: SINGLE PACK  
B. MARKING: PACKAGING TO BE MARKED  
"AMPHENOL RF, 112532-12G AND DATE CODE"



### RECOMMENDED MOUNTING HOLE DIMENSIONS



SCALE 1.500



**HEX-NUT & LOCKWASHER**  
**NOT SHOWN**

## CUSTOMER OUTLINE DRAWING

ALL OTHER SHEETS ARE FOR INTERNAL USE ONLY

NOTICE: These drawings, specifications, or other data (1) are, and remain the property of Amphenol corp. (2) must be returned upon request; and (3) are confidential and not to be disclosed to any person other than those to whom they are given by Amphenol Corp. The furnishing of these drawings, specifications, or other data by Amphenol Corp., or to any other person to anyone for any purpose is not to be regarded by implication or otherwise in any manner licensing, granting rights to permitting such holder or any other person to manufacture, use or sell any product, process or design, patented or otherwise, that may in any way be related to or disclosed by said drawings, specifications, or other data.

UNLESS OTHERWISE SPECIFIED  
DIMENSIONS ARE METRIC [INCHES] AND TOLERANCES ARE:

<0.5mm = ±0.05mm	[<0.020 = ±0.002]
0.5 - 6mm = ±0.1mm	[>0.020 - 0.236 = ±0.004]
>6.00 - 30mm = ±0.2mm	[>0.236 - 1.181 = ±0.008]
>30.00 - 120mm = ±0.3mm	[>1.181 - 4.725 = ±0.012]

ANGLES =  $\pm 1^\circ$

MATERIAL
----------

SEE NOTES

- ENGR.1  
KARTHIK R

ENGR.2  
M.ZHANG

DATE  
24-MAR-23

	TITLE
--	-------

75 OHM PUSH ON BNC STR  
PLUG TO JACK ADAPTER

SHEET NO. 2 OF 2

SCALE: 6.0:1.0

	SIZE
Small	8-9
Medium	10-11
Large	12-13
X-Large	14-15
XX-Large	16-17

DRAWING NO.	112532-12G
-------------	------------

ITEM NO. 112532-12G

PART NO.	112532-12G
----------	------------

REV

A