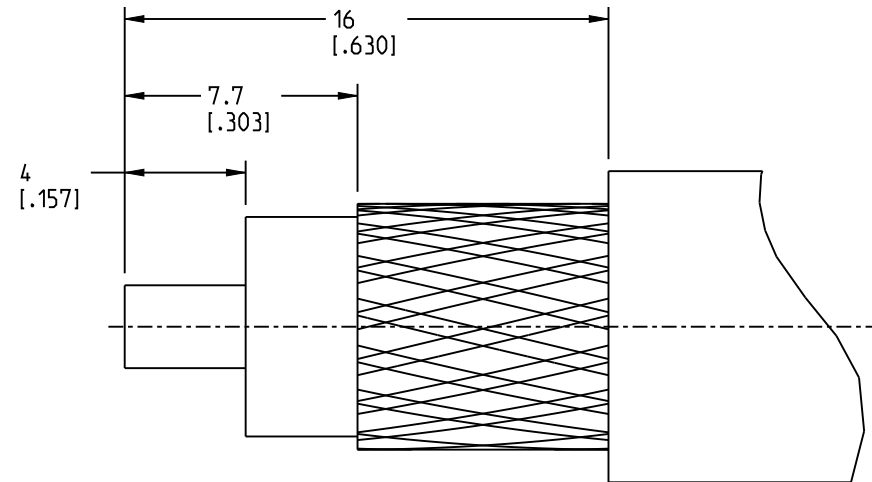
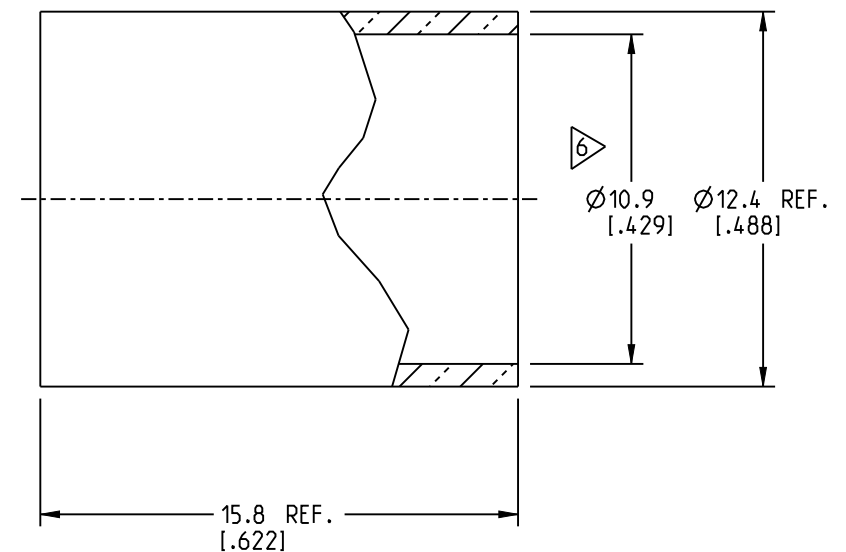
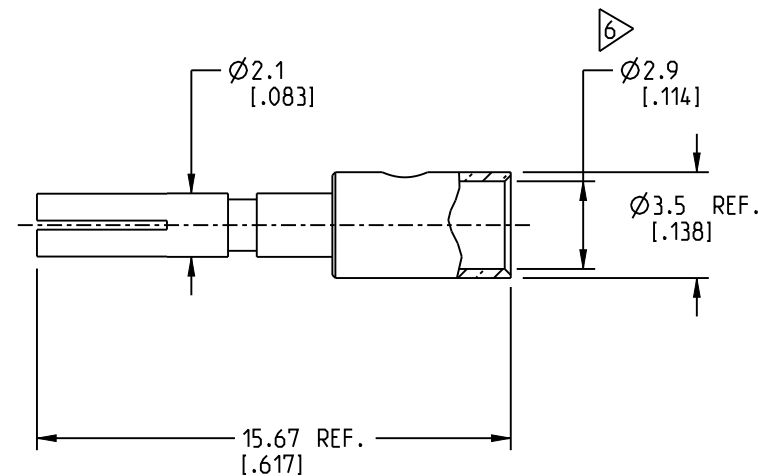
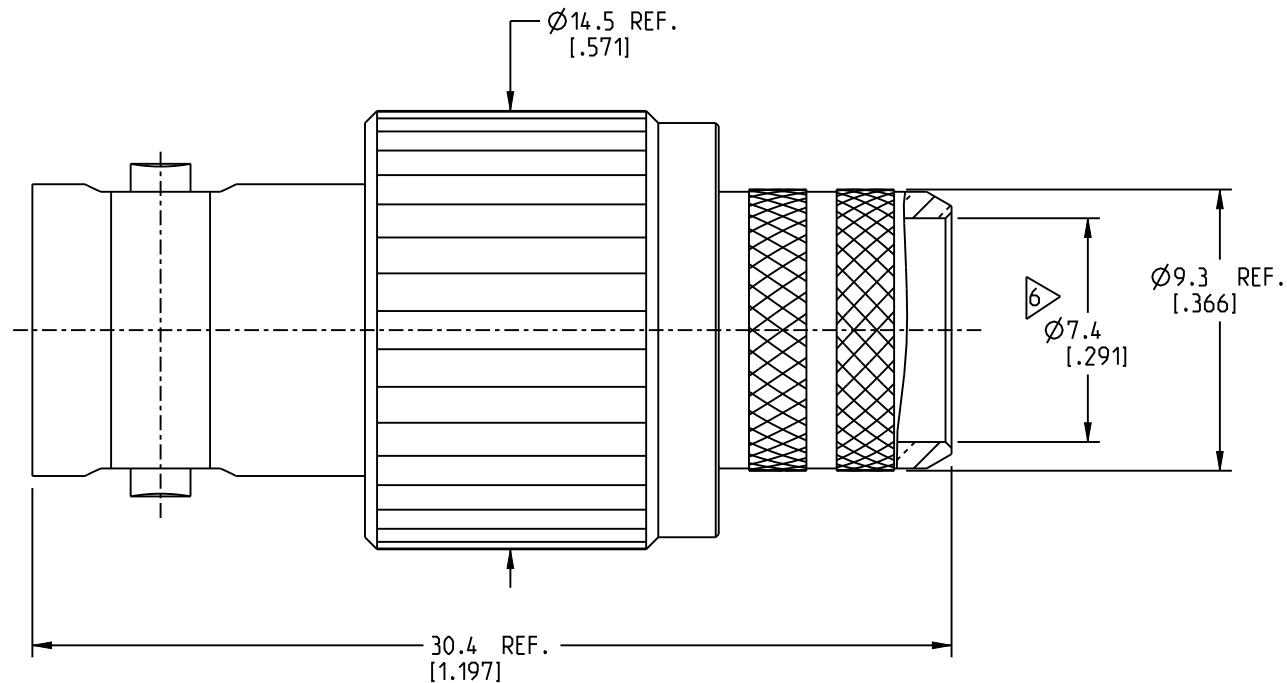


1. MATERIALS AND FINISHES:
BODY, BARREL, FERRULE - BRASS, NICKEL PLATING
CONTACT - PHOSPHOR BRONZE, GOLD PLATING
INSULATOR - PTFE, NATURAL
2. ELECTRICAL:
A. IMPEDANCE: 50 OHM
B. FREQUENCY RANGE: DC -4 GHz
3. MECHANICAL:
A. DURABILITY: 500 CYCLES MIN.
B. TEMPERATURE RANGE: -65°C TO 165°C
4. CRIMPED FERRULE HEX. CRIMP SIZE .429"
5. CRIMPED CONTACT PIN HEX. CRIMP SIZE .118" OR TO SOLDER

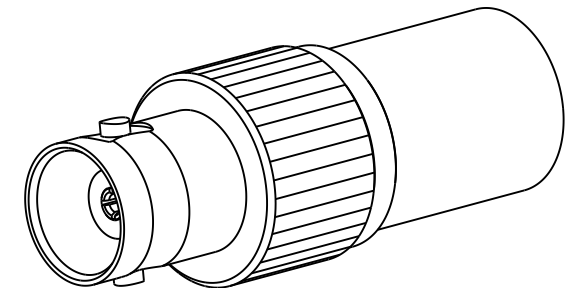
6. SHOWS CABLE ENTRY DIMENSIONS.



RECOMMENDED CABLE STRIPPING DIM'S



REVISIONS				
REV	DESCRIPTION	DATE	ECN	BY
NC	INITIAL RELEASE	08/18/1998	-----	GRS
A	UPDATE DRAWING FORMAT	01/23/2007	-----	GRS
B	UPDATE DRAWING FORMAT / SYNC ARFA AND NORTH AMERICA COD DRAWING	06-Jun-23	16685	SH



CUSTOMER OUTLINE DRAWING

ALL OTHER SHEETS ARE FOR INTERNAL USE ONLY

NOTICE: These drawings, specifications, or other data (1) are, and remain the property of Amphenol corp. (2) must be returned upon request; and (3) are confidential and not to be disclosed to any person other than those to whom they are given by Amphenol Corp. The furnishing of these drawings, specifications, or other data by Amphenol Corp., or to any other person to anyone for any purpose is not to be regarded by implication or otherwise in any manner licensing, granting rights to permitting such holder or any other person to manufacture, use or sell any product, process or design, patented or otherwise, that may in any way be related to or disclosed by said drawings, specifications, or other data.

UNLESS OTHERWISE SPECIFIED
DIMENSIONS ARE METRIC (INCHES) AND TOLERANCES ARE:


<0.5mm = ± 0.05 mm	[<0.020 = ± 0.002]
0.5 - 6mm = ± 0.1 mm	[0.020 - 0.236 = ± 0.004]
>6.00 - 30mm = ± 0.2 mm	[0.236 - 1.181 = ± 0.008]
>30.00 - 120mm = ± 0.3 mm	[1.181 - 4.725 = ± 0.012]

MATERIAL	
SEE NOTES	

TITLE
BNC CRIMP JACK (FOR BELDEN 8214, 9913, 9914)

Amphenol RF	
SIZE B	DRAWING NO. B6121A6-NT3G-9913-50
	ITEM NO. 016121AAH93NA5F
	PART NO. 112603

B

THIRD ANGLE PROJ. 

REFERENCE

EAR#

 ANGLES = $\pm 1^\circ$

ENGR.1
E. DIAZ

ENGR.2
M.ZHANG

DATE	18-MAY-23
------	-----------

SHEET NO. 2 OF 2

SCALE: 4.0:1.0

SIZE

B

REV

B