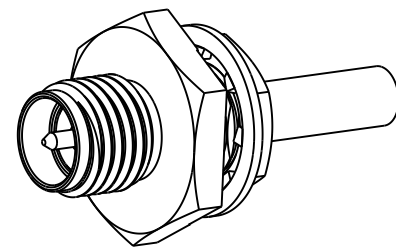
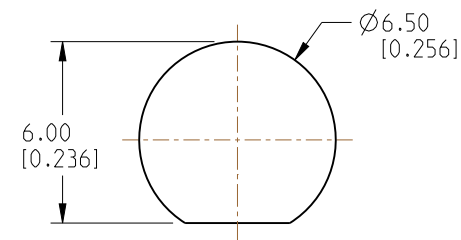
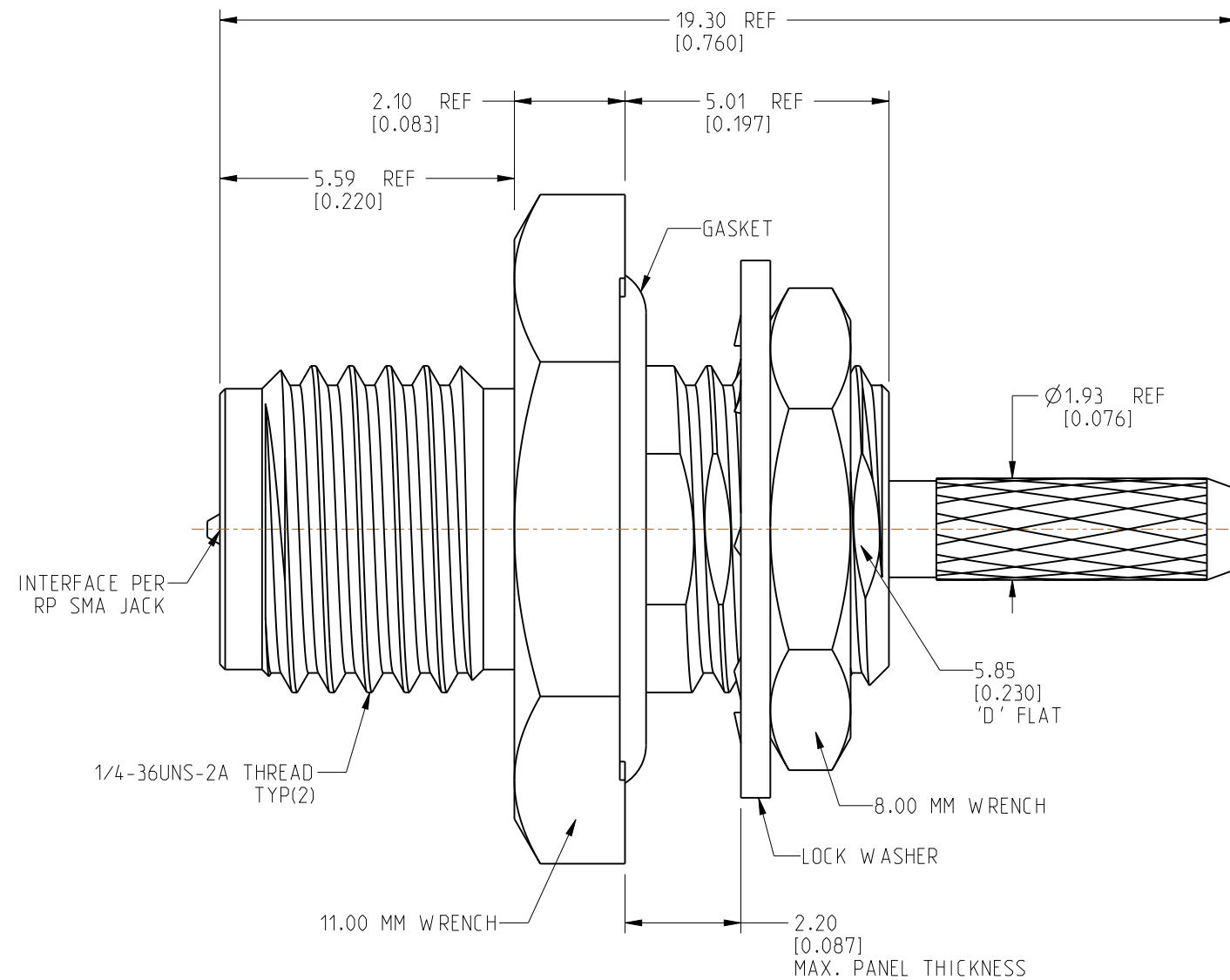


1. MATERIALS AND FINISHES:
BODY, BULLET CONTACT, LOCK WASHER AND
HEX NUT - BRASS, GOLD PLATING
CONTACT - BeCu, GOLD PLATING
FERRULE - COPPER, NICKEL PLATING
INSULATOR - PTFE, NATURAL
GASKET - SILICONE RUBBER, RED
2. ELECTRICAL:
 - A. IMPEDANCE: 50 OHM
 - B. FREQUENCY: DC - 6 GHz
 - C. VSWR: 1.30 MAX. @ DC - 3 GHz
1.40 MAX. @ 3 - 6 GHz
 - D. DIELECTRIC WITHSTANDING VOLTAGE: 500 VRMS, MIN.
3. MECHANICAL:
 - A. DURABILITY: 500 CYCLES MIN.
 - B. TEMPERATURE RANGE: -65°C TO +165°C

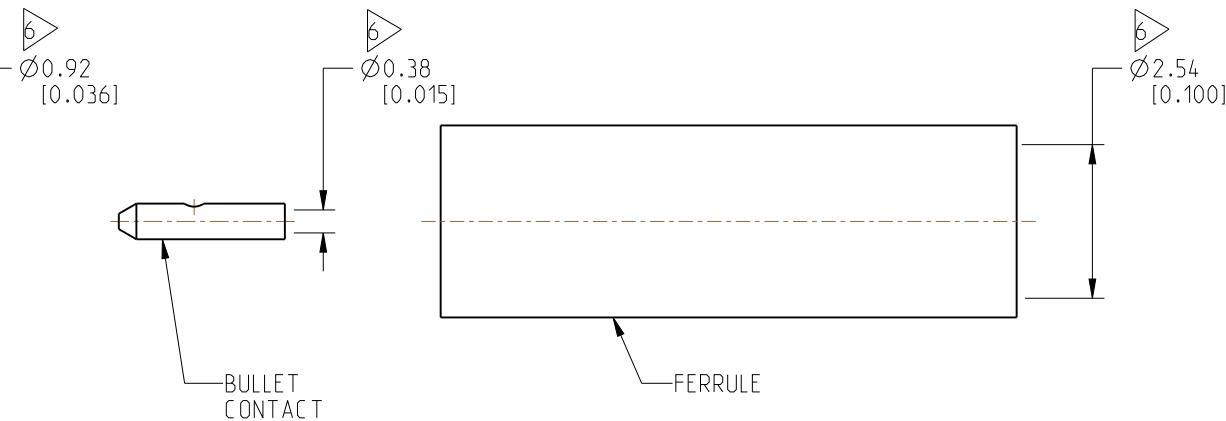
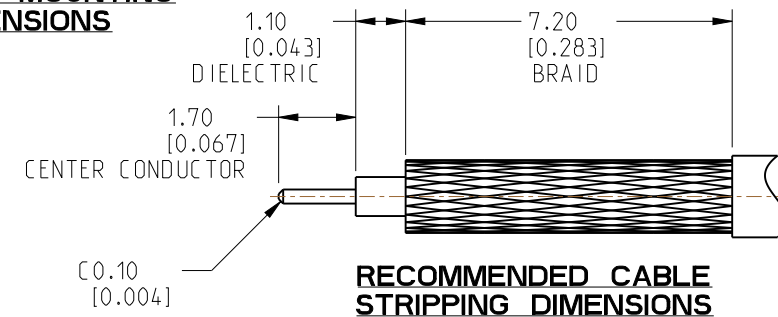
4. PACKAGING:
 - A. QUANTITY: SINGLE PACK
 - B. MARKING: PACKAGING TO BE MARKED
"AMPHENOL RF, 901-10773 AND DATE CODE"
5. CABLE ASSEMBLY INSTRUCTIONS:
 - A. TRIM CABLE AS SHOWN.
 - B. SLIDE FERRULE ONTO CABLE.
 - C. SOLDER CABLE CENTER CONDUCTOR TO BULLET CONTACT.
 - D. INSERT CABLE WITH FOIL ENTERING CONNECTOR AND BRAID OVER KNURL.
 - E. CRIMP FERRULE OVER BRAID WITH 0.105" HEX.

6. SHOWS CABLE ENTRY DIMENSIONS.



SCALE 2.500

RECOMMENDED MOUNTING HOLE DIMENSIONS



ALL OTHER SHEETS ARE FOR INTERNAL USE ONLY

NOTICE: These drawings, specifications, or other data (1) are, and remain the property of Amphenol corp (2) must be returned upon request; and (3) are confidential and not to be disclosed to any person other than those to whom they are given by Amphenol Corp. The furnishing of these drawings, specifications, or other data by Amphenol Corp., or to any other person to anyone for any purpose is not to be regarded by implication or otherwise in any manner licensing, granting rights to permitting such holder or any other person to manufacture, use or sell any product, process or design, patented or otherwise, that may in any way be related to or disclosed by said drawings, specifications, or other data.

UNLESS OTHERWISE SPECIFIED
DIMENSIONS ARE METRIC (INCHES) AND TOLERANCES ARE:

| | |
|-------------------------|---------------------------|
| <0.5mm = ±0.05mm | [<0.020 = ±0.002] |
| 0.5 - 6mm = ±0.1mm | [0.020 - 0.236 = ±0.004] |
| >6.00 - 30mm = ±0.2mm | [>0.236 - 1.181 = ±0.008] |
| >30.00 - 120mm = ±0.3mm | [>1.181 - 4.725 = ±0.012] |

| |
|-----------|
| MATERIAL |
| SEE NOTES |

| TITLE |
|--|
| RP SMA STR BHD JACK FRONT MOUNT FOR RG 178 CABLE |

Amphenol RF

| | | |
|---------------|-------------|-----------|
| SIZE B | DRAWING NO. | 901-10773 |
| | ITEM NO. | 901-10773 |
| | PART NO. | 901-10773 |

REV
B

THIRD ANGLE PROJ. 

REFERENCE

| | |
|------|-------|
| EAR# | 10133 |
|------|-------|

 ANGLES = $\pm 1^\circ$

ENGR.1
MADHAN G

ENGR.2
JACK LIANG

| | |
|------|-----------|
| DATE | 11-JAN-21 |
|------|-----------|

SHEET NO. 2 OF 2

SCALE: 8.0:1.0

5

4.

3

2

1