

NOTES:

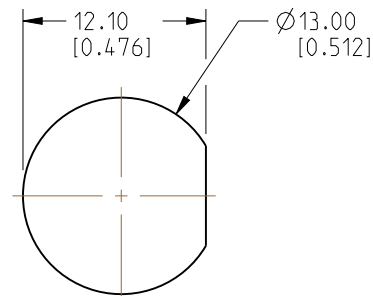
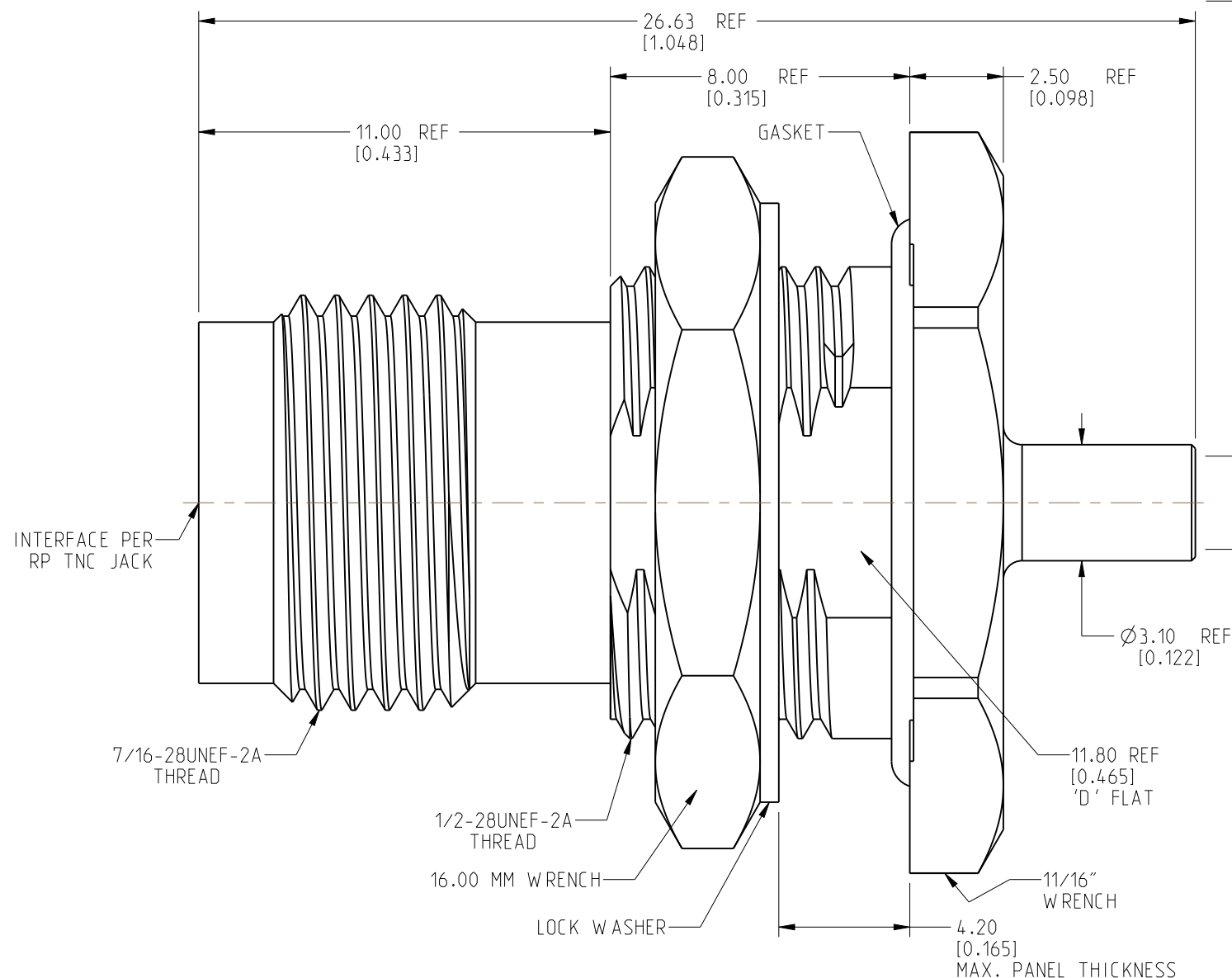
1. MATERIALS AND FINISHES:
BODY, INNER FERRULE
HEX NUT, SLEEVE & LOCK WASHER - BRASS, NICKEL PLATING
CONTACT - BeCu, GOLD PLATING
BULLET CONTACT - BRASS, GOLD PLATING
INSULATOR & INSULATOR DISC - PTFE, NATURAL
GASKET & O-RING - SILICONE RUBBER, RED

2. ELECTRICAL:
- A. IMPEDANCE: 50 OHM
 - B. FREQUENCY RANGE: DC - 9 GHz
 - C. VSWR: 1.30 MAX. @ DC - 3 GHz
1.40 MAX. @ 3 - 6 GHz
1.50 MAX. @ 6 - 9 GHz
 - D. DIELECTRIC WITHSTANDING VOLTAGE: 500 VRMS. MIN.

3. MECHANICAL:
- A. DURABILITY: 500 CYCLES MIN.
 - B. TEMPERATURE RANGE: -65°C TO +165°C
 - C. SEALING: MEETS IP-67 REQUIREMENTS IN UNMATED CONDITION

4. PACKAGING:
 - A. QUANTITY: SINGLE PACK
 - B. MARKING: PACKAGING TO BE MARKED
"AMPHENOL RF, 31-7004 AND DATE CODE"
5. CABLE ASSEMBLY INSTRUCTIONS:
 - A. TRIM CABLE AS SHOWN (TWO STAGE TRIM).
 - B. INSERT CABLE THROUGH INNER FERRULE AND PEEL BRAID BACK, OVER INNER FERRULE.
 - C. INSTALL SLEEVE AND INSULATOR DISC OVER CABLE, BOTTOMING ON INNER FERRULE.
 - D. SOLDER BULLET CONTACT TO CABLE CENTER CONDUCTOR, BOTTOMING ON INSULATOR DISC.
 - E. INSERT CABLE INTO CONNECTOR UNTIL IT BOTTOMS.
 - F. CRIMP BODY OVER INNER FERRULE USING 0.105" HEX

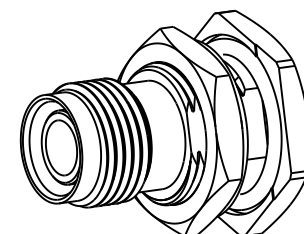
6. SHOWS CABLE ENTRY DIMENSIONS.



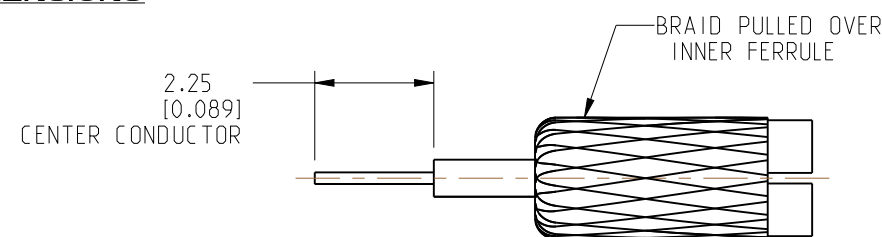
RECOMMENDED MOUNTING HOLE DIMENSIONS



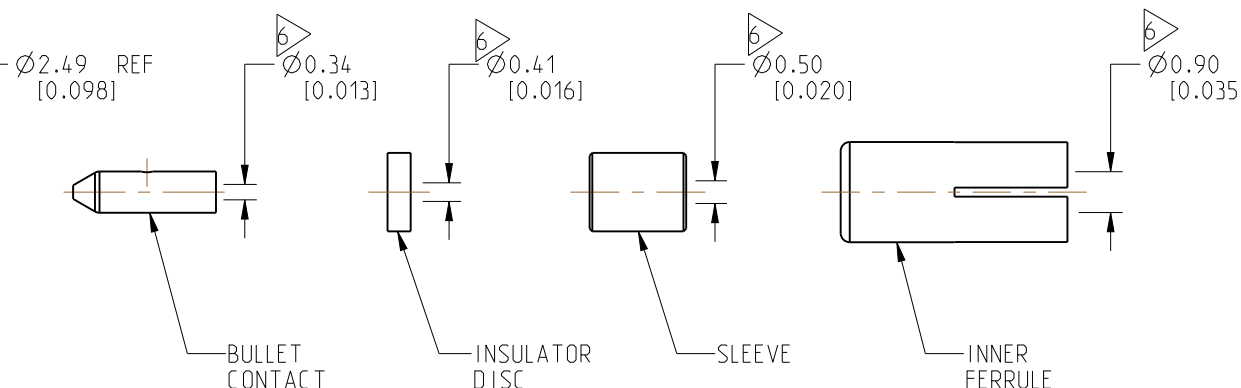
RECOMMENDED CABLE STRIPPING DIMENSIONS (TRIM 1)



SCALE 1.500



RECOMMENDED CABLE STRIPPING DIMENSIONS (TRIM 2)



CUSTOMER OUTLINE DRAWING

NOTICE: These drawings, specifications, or other data (1) are, and remain the property of Amphenol corp. (2) must be returned upon request; and (3) are confidential and not to be disclosed to any person other than those to whom they are given by Amphenol Corp. The furnishing of these drawings, specifications, or other data by Amphenol Corp., or to any other person to anyone for any purpose is not to be regarded by implication or otherwise in any manner licensing, granting rights to permitting such holder or any other person to manufacture, use or sell any product, process or design, patented or otherwise, that may in any way be related to or disclosed by said drawings, specifications, or other data.

UNLESS OTHERWISE SPECIFIED
DIMENSIONS ARE METRIC (INCHES) AND TOLERANCES ARE:

<0.5mm = ± 0.05 mm	[<0.020 = ± 0.002]
>0.5 - 6mm = ± 0.1 mm	[>0.020 - 0.236 = ± 0.004]
>6.00 - 30mm = ± 0.2 mm	[>0.236 - 1.181 = ± 0.008]
>30.00 - 120mm = ± 0.3 mm	[>1.181 - 4.725 = ± 0.012]

MATERIAL	
SEE NOTES	

ENGR.1
KARTHIK R

ENGR.2
M.ZHANG

DATE 20-SEP-23

TITLE
RP TNC STR BHD JACK IP 67 FOR 0.81 MM CABLE

SHEET NO. 2 OF 2

SCALE: 6.0:1.0

Amphenol RF

SIZE B	DRAWING NO.	31-7004
	ITEM NO.	31-7004
	PART NO.	31-7004

REV
A