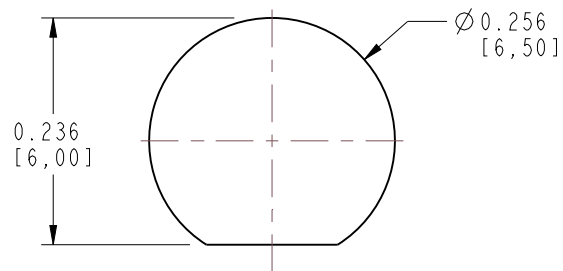


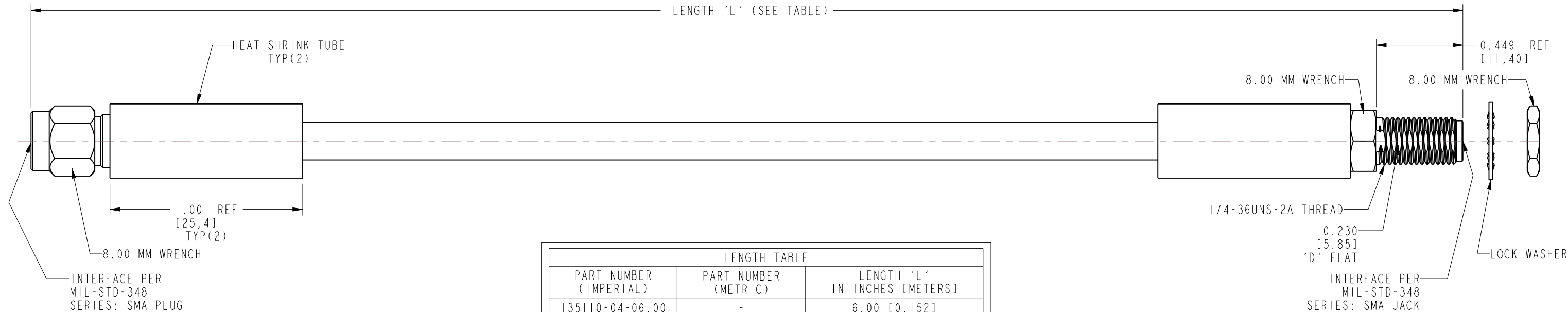
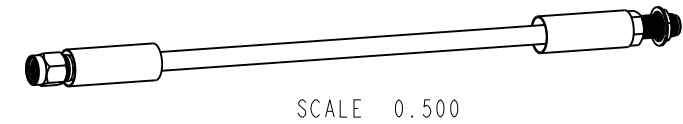
1. MATERIALS AND FINISHES:
SMA STR PLUG - P/N: 132113
SMA STR BHD JACK - P/N: 132118
CABLE - RG-58/U COAXIAL CABLE

3. PACKAGING:
A. QUANTITY: SINGLE PACK
B. MARKING: BAG TO BE MARKED
"AMPHENOL RF, 135110-04-XX-XX AND DATE CODE"



RECOMMENDED MOUNTING HOLE DIMENSIONS

REVISIONS				
REV	DESCRIPTION	DATE	ECN	BY
NC	RELEASE TO MFG.	02/04/2009	-----	--
C	ADDED 13511-04-M2.00 AND 13511-04-M4.00	01/08/2015	2852	NR/BCR
D	NOTES, FORMAT UPDATED & M6.00 LENGTH ADDED	07/08/2015	12434	KR
E	SEE SHEET I	05/13/2021	15696	ED
F	-144 LENGTH ADDED	01/24/2022	16096	ED



LENGTH TABLE		
PART NUMBER (IMPERIAL)	PART NUMBER (METRIC)	LENGTH 'L' IN INCHES [METERS]
135110-04-06.00	-	6.00 [0.152]
-	135110-04-M0.25	9.84 [0.250]
135110-04-12.00	-	12.00 [0.305]
135110-04-18.00	-	18.00 [0.457]
-	135110-04-M0.50	19.69 [0.500]
135110-04-24.00	-	24.00 [0.610]
-	135110-04-M0.75	29.53 [0.750]
135110-04-36.00	-	36.00 [0.914]
-	135110-04-M1.00	39.37 [1.000]
135110-04-48.00	-	48.00 [1.219]
-	135110-04-M2.00	78.74 [2.000]
135110-04-144	-	144.00 [3.657]
-	135110-04-M4.00	157.48 [4.000]
-	135110-04-M6.00	236.22 [6.000]

TOLERANCE TABLE	
LENGTH IN INCHES/FT [METERS]	TOLERANCE
0" - 23.90" [0 - 0.607]	±0.25" [0.006]
24.00" - 59.00" [0.610 - 1.499]	±0.50" [0.013]
5.0' - 24.9' [1.524 - 7.617]	±2.5%
25.0' & UP [7.620 & UP]	±5.0%

<input checked="" type="checkbox"/> FREQUENCY: DC -1 GHz	<input checked="" type="checkbox"/> CONTINUITY
<input type="checkbox"/> VSWR: ---- 1 MAX.	<input checked="" type="checkbox"/> HI-POT : 500 VRMS
<input type="checkbox"/> INS. LOSS: ---- dB MAX.	<input type="checkbox"/> OTHER

NOTICE: These drawings, specifications, or other data (1) are, and remain the property of Amphenol corp. (2) must be returned upon request; and (3) are confidential and not to be disclosed to any person other than those to whom they are given by Amphenol Corp. The furnishing of these drawings, specifications, or other data by Amphenol Corp., or to any other person to anyone for any purpose is not to be regarded by implication or otherwise in any manner licensing, granting rights to permitting such holder or any other person to manufacture, use or sell any product, process or design, patented or otherwise, that may in any way be related to or disclosed by said drawings, specifications, or other data.

UNLESS OTHERWISE SPECIFIED
DIMENSIONS ARE METRIC (INCHES) AND TOLERANCES ARE:

<0.5mm = ±0.05mm	[<0.020 = ±0.002]
>0.5 - 6mm = ±0.1mm	[>0.020 - 0.236 = ±0.004]
>6.00 - 30mm = ±0.2mm	[>0.236 - 1.181 = ±0.008]
>30.00 - 120mm = ±0.3mm	[>1.181 - 4.725 = ±0.012]

MATERIAL	SEE NOTE 1
----------	------------

TITLE
SMA STR PLUG TO SMA STR BHD JACK ON RG-58 COAXIAL CABLE, VARIOUS LENGTHS

Amphenol RF

SIZE B	DRAWING NO.	135110-04-XX-XX
	ITEM NO.	135110-04-XX-XX
	PART NO.	135110-04-XX-XX

REV
E

THIRD ANGLE PROJ. 

REFERENCE

EAR#

ANGLES = $\pm 1^\circ$

ENGR.1
E. DIAZ

ENGR.2

DATE	05/13/2021
------	------------

SHEET NO. 2 OF 2

SCALE: 2.0:1.0

SIZ

D

B

REV

F

CUSTOMER OUTLINE DRAWING

ALL OTHER SHEETS ARE FOR INTERNAL USE ONLY