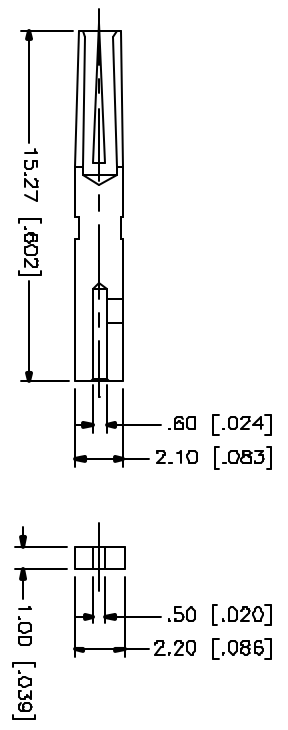
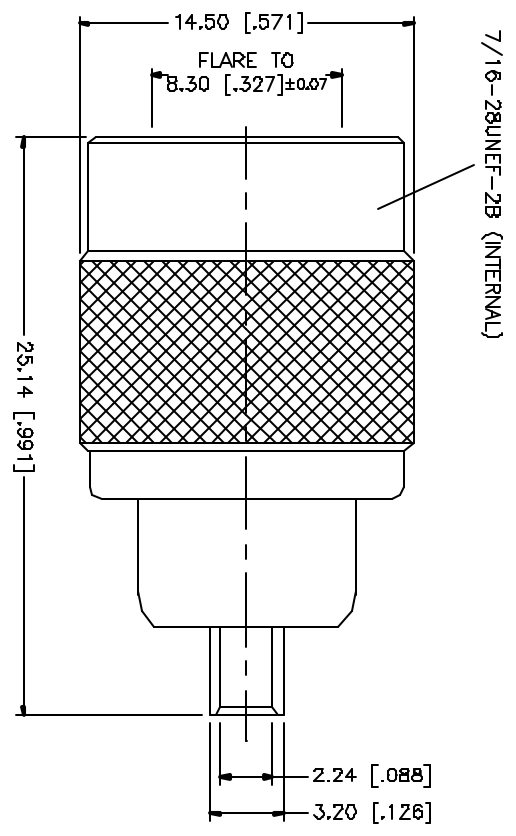
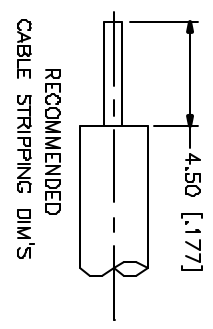


REV.	DATE	DESCRIPTION
A	05/01/04	UPDATE DRAWING FORMAT



NOTE:  
1. CRIMPED CONTACT PIN  
HEX CRIMP SIZE .068"

REV.	DATE	DESCRIPTION
B		
7		
5		
4		
3		
2		
1		

DESCRIPTION	MATERIAL	FINISH	QTY
INSULATOR	TEFLON	NATURAL	1
CONTACT PIN	PHOS. BRONZE	GOLD	1
INSULATOR	TEFLON	NATURAL	1
BODY	BRASS	NICKEL	1

UNLESS OTHERWISE SPECIFIED DIMENSIONS ARE IN MILLIMETERS (DIMENSIONS IN [ ] ARE IN INCHES AND FOR CONVERSION PURPOSES ONLY.)	APPROVALS	DATE
UNLESS OTHERWISE SPECIFIED DIMENSIONS ARE IN MILLIMETERS (DIMENSIONS IN [ ] ARE IN INCHES AND FOR CONVERSION PURPOSES ONLY.) TOLERANCES FOR DIMENSIONS ARE: 0.6 - 8mm ± 0.20mm 8 - 30mm ± 0.40mm 30 - 120mm ± 0.50mm UNLESS OTHERWISE SPECIFIED DIMENSIONS ARE: TOLERANCES FOR DIMENSIONS ARE: .020 - .315 = ± 0.001" .315 - 1.180 = ± 0.015" 1.180 - 4.724 = ± 0.020"	DRAWN: G.R.S. CHECKED: ISSUED: SHEET: 1 OF 1	05/01/04

CDL FILE	DWG. NO.	REV.	SIZE	SCALE
C:/122/122387RP.DWG	122387RP.DWG	A	A	NA

PART DESCRIPTION		PART NO.
<b>Amphenol Connex</b> TNC REVERSE POLARITY DIRECT SOLDER PLUG		122387RP