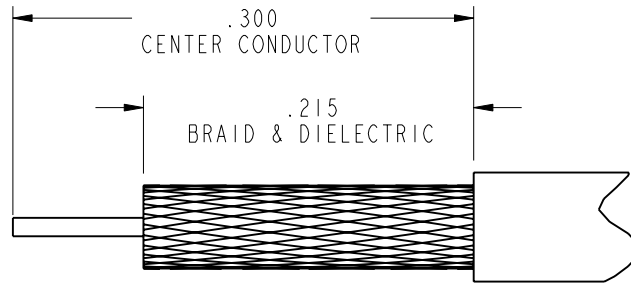


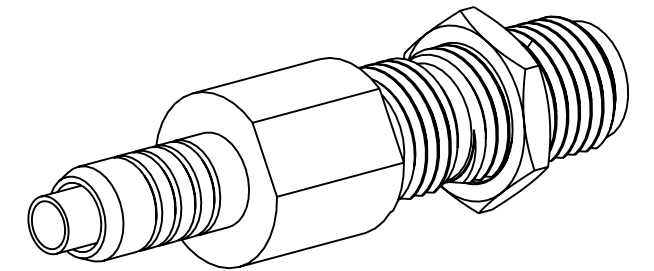
NOTES:

1. MATERIALS AND FINISHES:
 - BODY - BRASS, GOLD PLATING (.000010 MIN THICK)
 - CONTACT - BERYLLIUM COPPER, GOLD PLATING (.000030 MIN THICK)
 - INSULATOR - PTFE
2. ELECTRICAL:
 - A. IMPEDANCE: 50 OHM
 - B. FREQUENCY RANGE: DC - 3 GHz
 - C. VSWR(RETURN LOSS): 1.28 (18.22 dB) MAX.
3. MECHANICAL:
 - A. DURABILITY: 500 CYCLES MIN.
 - B. TEMPERATURE RANGE: -65° C TO +165° C
4. PACKAGING:
 - A. QUANTITY: SINGLE PACK
 - B. MARKING: BAG TO BE MARKED "AMPHENOL, 901-10120, AND DATE CODE"
5. CABLE ASSEMBLY INSTRUCTIONS:
 - A. TRIM CABLE AS SHOWN
 - B. SLIDE INNER FERRULE ONTO CABLE JACKET POSITIONING FLUSH WITH END OF JACKET
 - C. FOLD BRAID BACK OVER INNER FERRULE, MAKING SURE TO SMOOTH OUT BRAID ON INNER FERRULE.
 - D. SLIDE SLEEVE FOLLOWED BY DIELECTRIC BUSHING OVER CABLE DIELECTRIC UNTIL BOTTOMING AGAINST BRAID. FRONT SURFACE OF DIELECTRIC BUSHING TO BE FLUSH WITH END OF CABLE DIELECTRIC
 - E. SOLDER CONTACT TO CABLE CENTER CONDUCTOR
 - F. INSERT CABLE WITH CONTACT, DIELECTRIC BUSHING, AND INNER FERRULE INTO CONNECTOR UNTIL BOTTOMING
 - G. CRIMP BODY OVER INNER FERRULE USING AMPHENOL TOOL 227-944 & DIE SET 227-1211-62 CAVITY (.151 HEX)

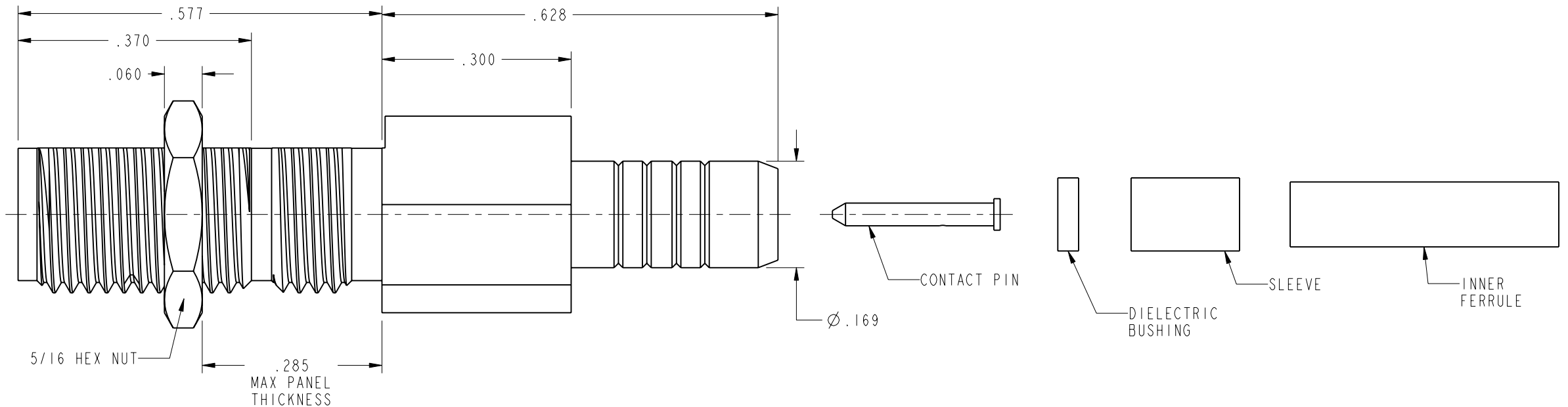
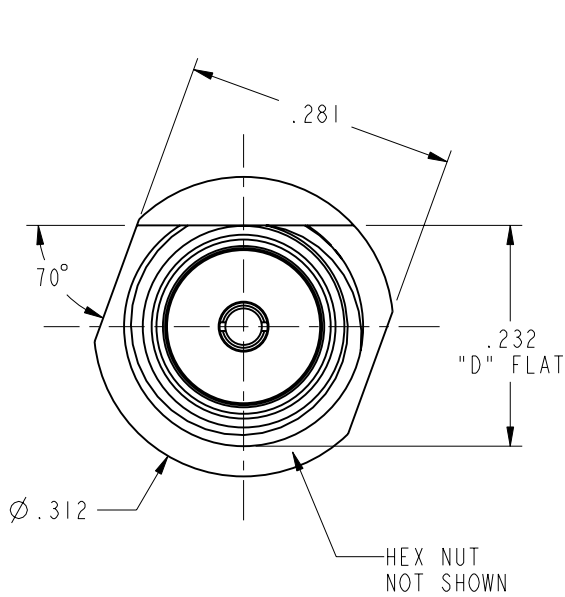
901-10120		REVISIONS			
DRAWING NO.	REV	DESCRIPTION	DATE	ECO	APPR
THIRD ANGLE PROJ.	A	RELEASE TO MFG.	11/29/04	45296	MAH



RECOMMENDED CABLE STRIPPING DIMENSIONS
SCALE 8.000



SCALE 3.000



CUSTOMER OUTLINE DRAWING
ALL OTHER SHEETS ARE FOR INTERNAL USE ONLY

UNLESS OTHERWISE SPECIFIED, DIMENSIONS ARE IN INCHES AND TOLERANCES ARE: 2 PLACE DECIMAL ±.015 (0,381 mm) 3 PLACE DECIMAL ±.005 (0,127 mm) ANGLES ± 1°	MATERIAL	DRAWN MIKE HOYACK	DATE 23-Nov-04	TITLE SMA BULKHEAD TO RG-178 CABLE		Amphenol RF Danbury, CT, USA Tainan, Taiwan Shenzhen, China www.amphenolrf.com		
	REFERENCE	ENGINEER MIKE HOYACK	DATE 23-Jul-03					
NOTICE - These drawings, specifications, or other data (1) are, and remain the property of Amphenol Corp. (2) must be returned upon request; and (3) are confidential and not to be disclosed to any person other than those to whom they are given by Amphenol Corp. The furnishing of these drawings, specifications, or other data by Amphenol Corp., or to any other person to anyone for any purpose is not to be regarded by implication or otherwise in any manner licensing, granting rights or permitting such holder or any other person to manufacture, use or sell any product, process or design, patented or otherwise, that may in any way be related to or disclosed by said drawings, specifications, or other data.	EAR# 1054 & 1598 GEN# ASSYF65_SMA 615X-1952-100 SIMILAR TO 615X-1924-100	APPROVED O. BARTHELMES	DATE 11/24/04	CODE ID 74868	DWG SIZE B	DRAWING NO. 901-10120	SCALE: 5.0:1	SHEET 2 OF 2
			CAD FILE I:\SMA\901-10120					